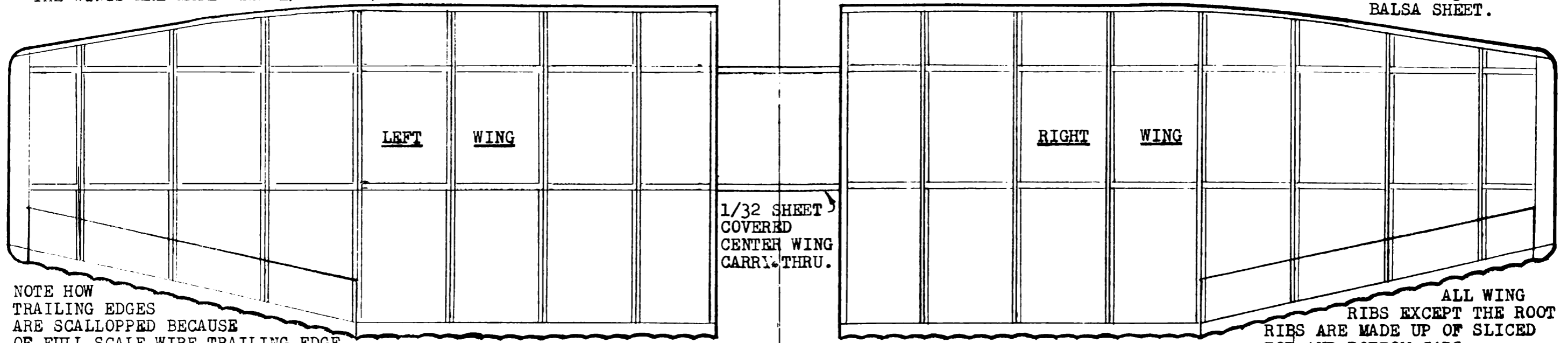


THE WINGS ARE MADE WITH 1/16 BY 1/8 Balsa LEADING AND TRAILING EDGES. THE WING SPARS ARE CUT FROM 1/16TH SHEET Balsa. TIPS ARE CUT FROM 3/16TH Balsa SHEET.

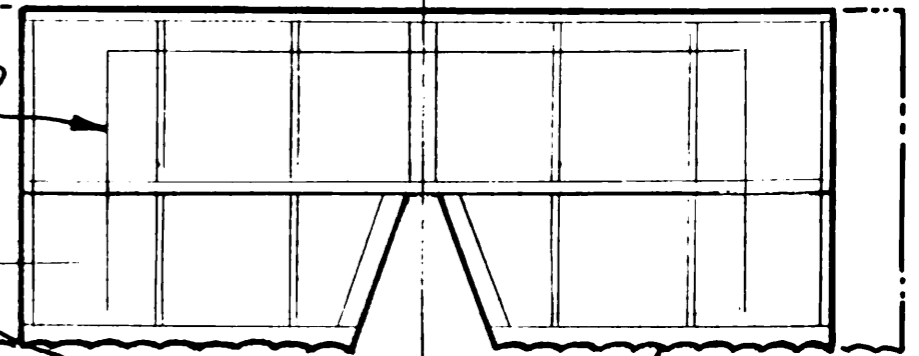


CARVE NOSE BLOCK FROM 1/4TH BLOCK Balsa. LOCATOR BLOCK TO FIT BODY FRAME IS ALSO 1/4TH.

COWL TOP IS CARVED FROM 3/16TH BLOCK HOLLOWED AS SHOWN BY DOTTED LINE.



AMUSING SCALE TAIL OUTLINE



THE TAIL SURFACES ARE BUILT UP DIRECTLY OVER THE PLAN USING 1/16TH THICK PIECES. NOTE HOW THE TRAILING EDGE PIECES ARE SCALLOPPED TO SIMULATE WIRE TRAILING EDGES.

SUGGESTED BY FLIGHT TEST TAIL ENLARGEMENT

VERTICAL TAIL

TOP OF FUSELAGE AFT OF WING CARRY THRU NOTCH IS BUILT UP FROM TWO TAPERED 1/32ND SHEET PIECES ABOVE TOP LONGERONS AND COVERED WITH FLAT 1/32ND SHEET WITH ITS GRAIN CROSSWISE TO THE FUSELAGE.

FOUR BLADE PLASTIC PROPELLER.

FUSELAGE TOP VIEW

COCKPIT HOLE IN TOP DECKING

Balsa BACKREST

PLASTIC WINDSHIELD

PECK PLASTIC THRUST BEARING.

BASSWOOD STICK TAIL SKID.

1/16TH SHEET NOSE SIDES

1/32ND THICK STREAMLINED STRUTS

FUSELAGE SIDE VIEW

COVER MODEL WITH JAPANESE TISSUE.

SOLID ROOT RIB PATTERN

**FARMAN 1000**

3/4 DIAMETER WHEELS

LANDING GEAR WIRE

FRONT VIEW

TIP RIB PATTERN

A 9 INCH "MIAMI" PEANUT  
By *Halt Mooney* 03-12-80

(WING SPAN IS 15 INCHES)