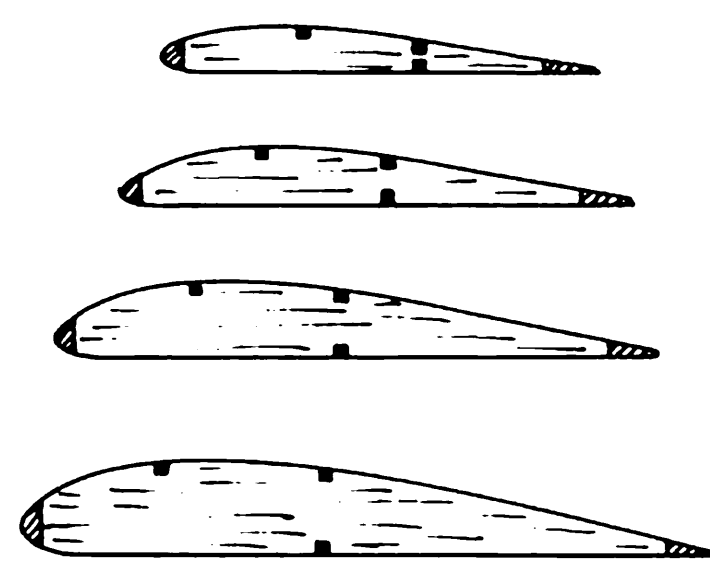
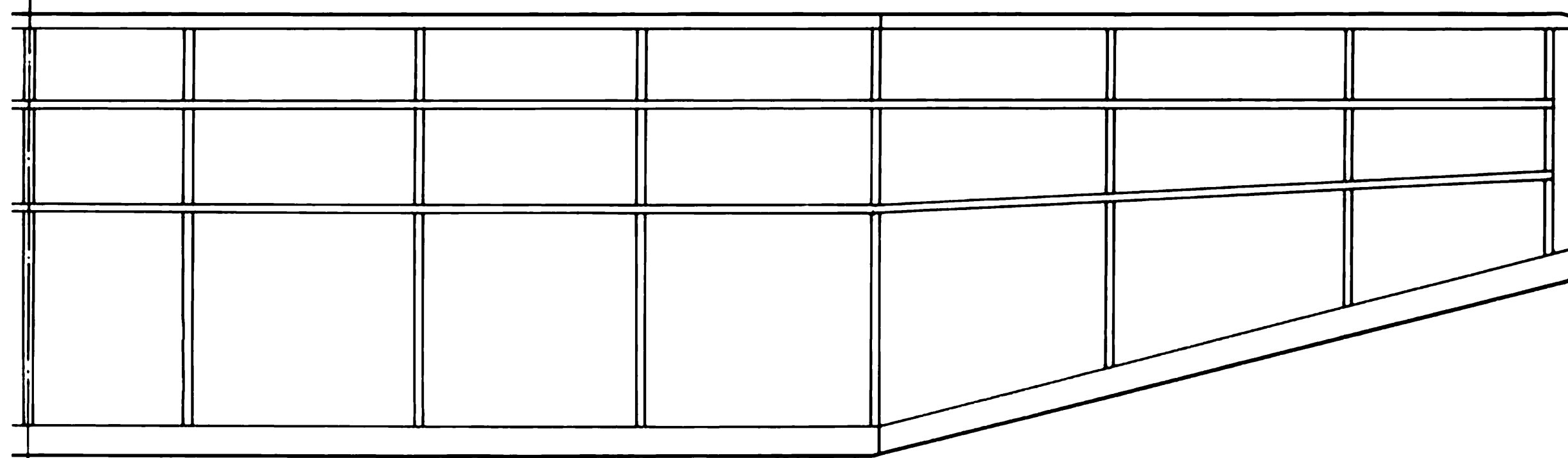
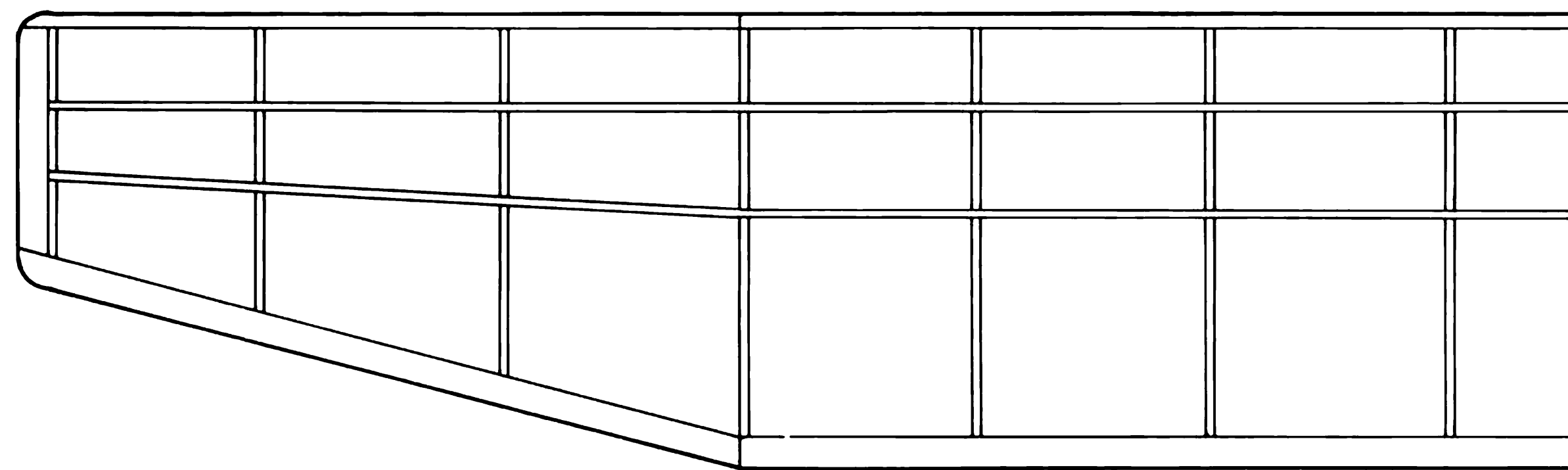


THE WING STRUCTURE HAS LEADING EDGE, TRAILING EDGE, THREE SPAR

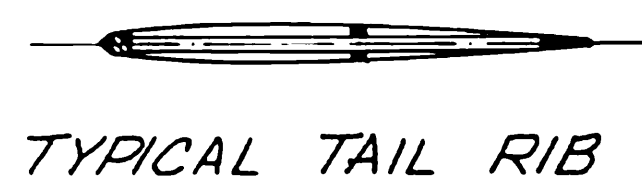
FIFTEEN RIBS, AND TWO TIP PIECES - SEE FRONT VIEW FOR DIHEDRAL



WING RIBS



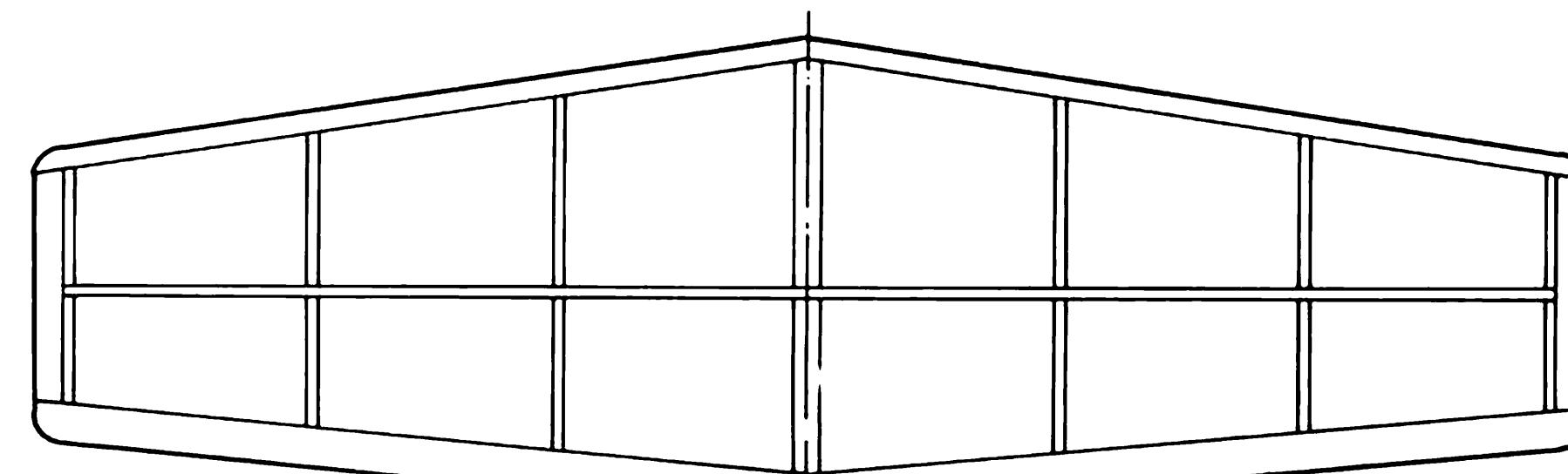
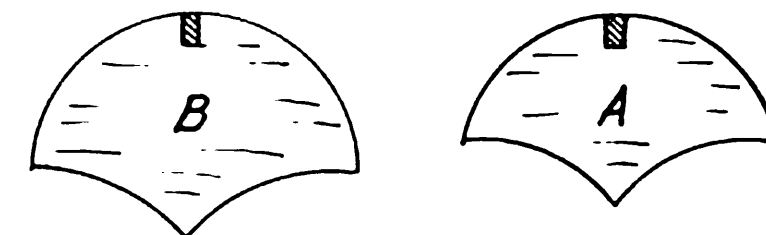
WING



TYPICAL TAIL RIB

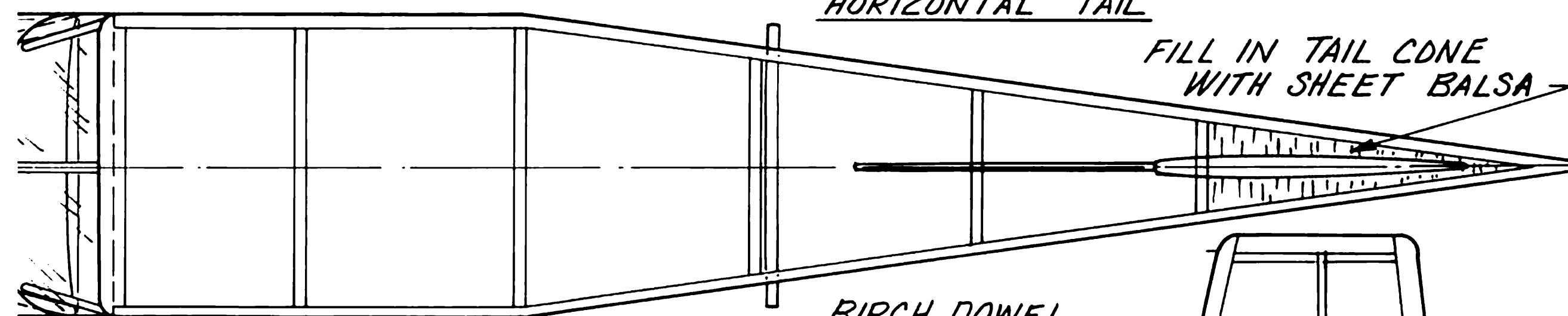
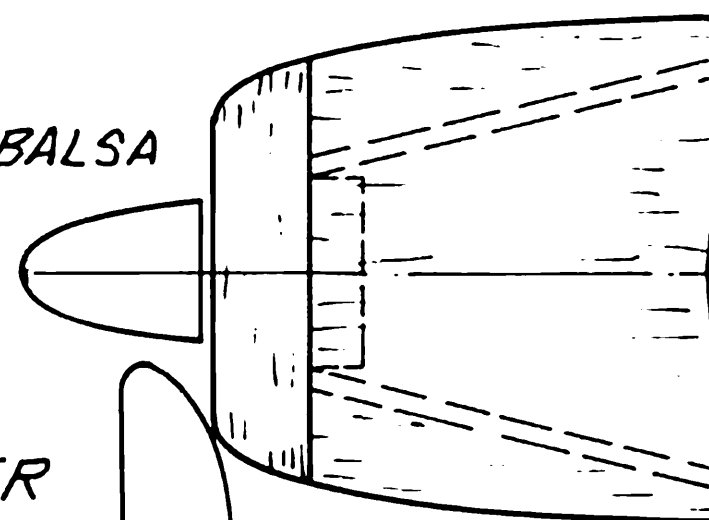
FLOAT FORMER

WINDSHIELD AND WINDOWS ARE THIN TRANSPARENT PLASTIC



HORIZONTAL TAIL

- NOTES:
- EXCEPT WHERE OTHERWISE INDICATED ALL PARTS ARE BALSA
 - FORWARD OF THE CABIN THE NOSE CONTOURS ARE CREATED FROM CARVED BALSA BLOCKS
 - FLOATS ARE COVERED WITH SHEET BALSA - USE A CARVED BLOCK FOR THE FLOAT NOSE
 - POWER WITH 4 OR 5 LOOPS OF 1/8 TH FLAT RUBBER
 - FLIGHT CENTER OF GRAVITY INDICATED BY

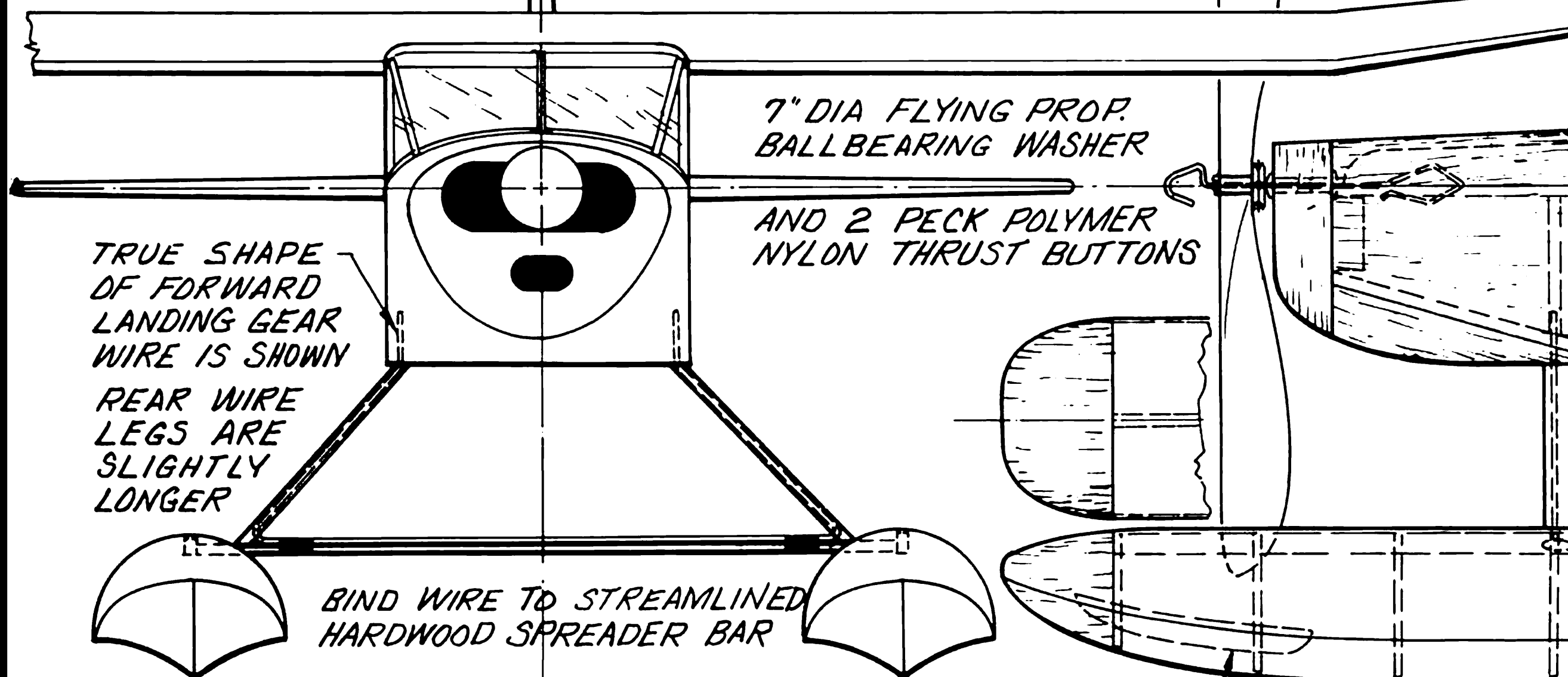


FUSELAGE TOP VIEW

FILL IN TAIL CONE WITH SHEET BALSA

BIRCH DOWEL MOTOR PEG
VERTICAL TAIL

DORSAL FIN



FRONT VIEW

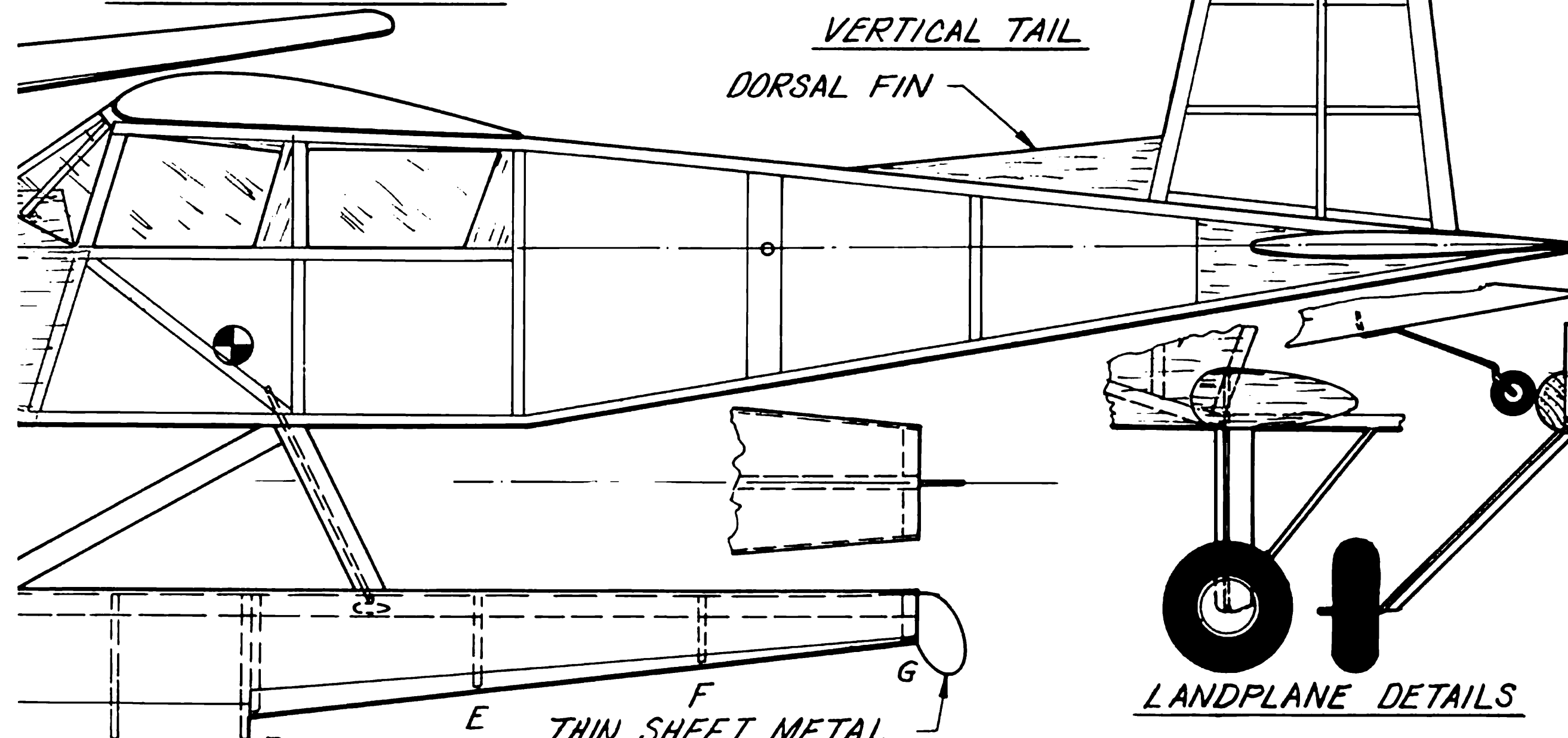
7" DIA FLYING PROP
BALLBEARING WASHER

AND 2 PECK POLYMER
NYLON THRUST BUTTONS

TRUE SHAPE OF FORWARD
LANDING GEAR
WIRE IS SHOWN
REAR WIRE
LEGS ARE
SLIGHTLY
LONGER

BIND WIRE TO STREAMLINED
HARDWOOD SPREADER BAR

SPRAY DAM A B C C



SIDE VIEW

THIN SHEET METAL
RUDDERS ON EACH
FLOAT

LANDPLANE DETAILS