

A SCALE MODEL OF
Mike Kimbrel's
 REPLICA
1924
DORMOY
BATHTUB

Designed & Drawn by: Hank Ilitzsch
 traced in ink by: *RL Blitzer*

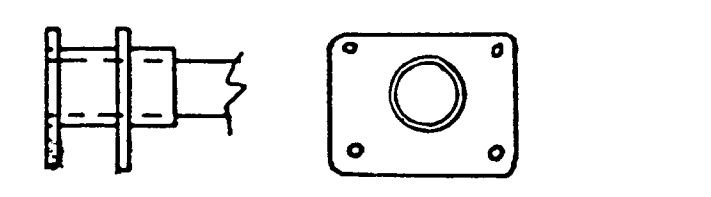
SPEC'S	
Span	95.68"
Wing Area	1344 sq. in.
Length	54.32"
Power	.60 - .70
Scale	4" = 1'

MODEL BUILDER magazine
 Plan No: 3811-A

14

6 5/8" Dia. wire wheels

Front L.G. & Lift wire attach fitting (see rear fitting for details of construction)



Rear L.G. & lift strut attach fitting this must be slipped onto fuse boom before constructing fuse. Epoxy & pin when aligned.



Throttle Knob (radio on-off switch)

