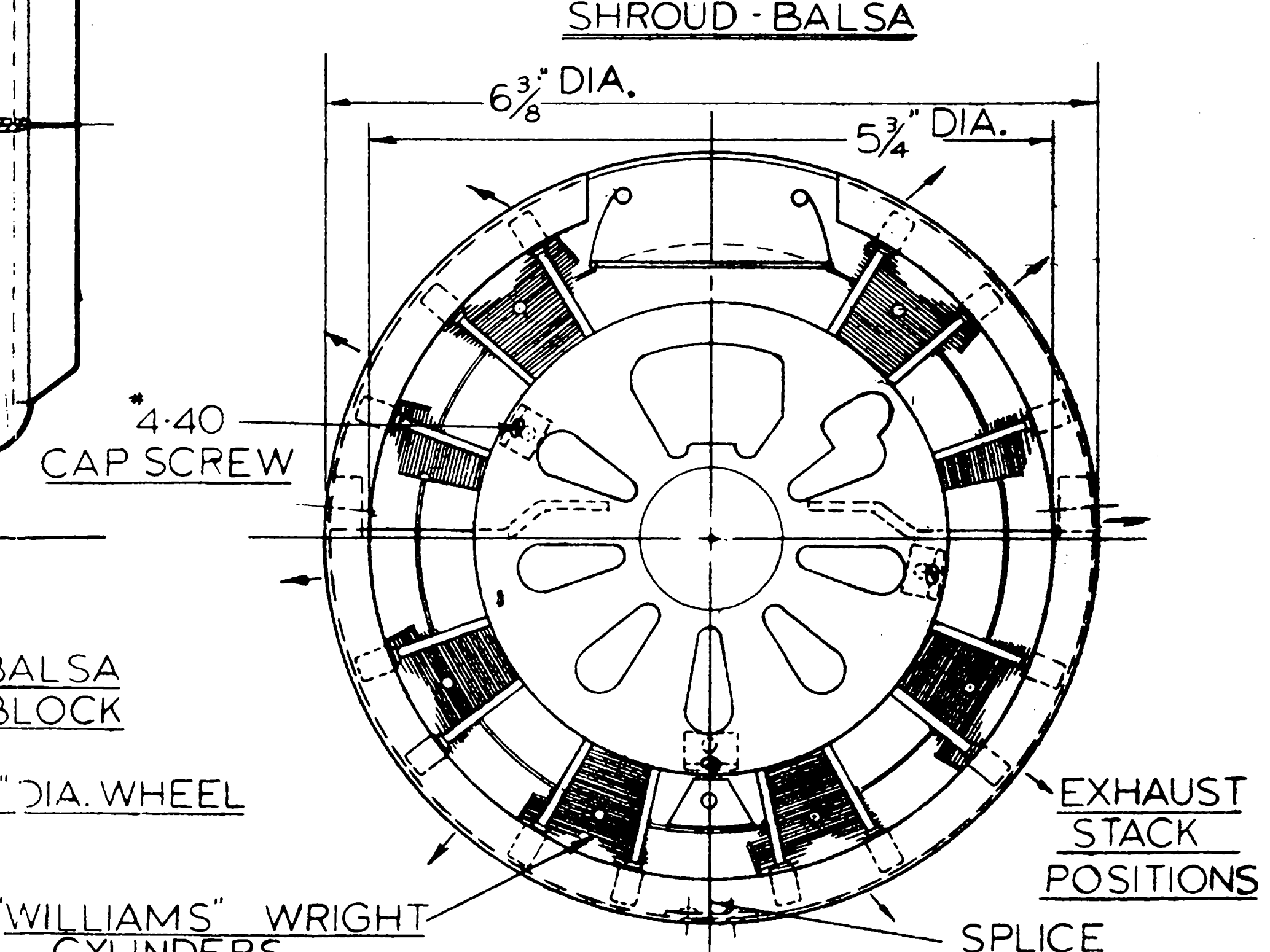
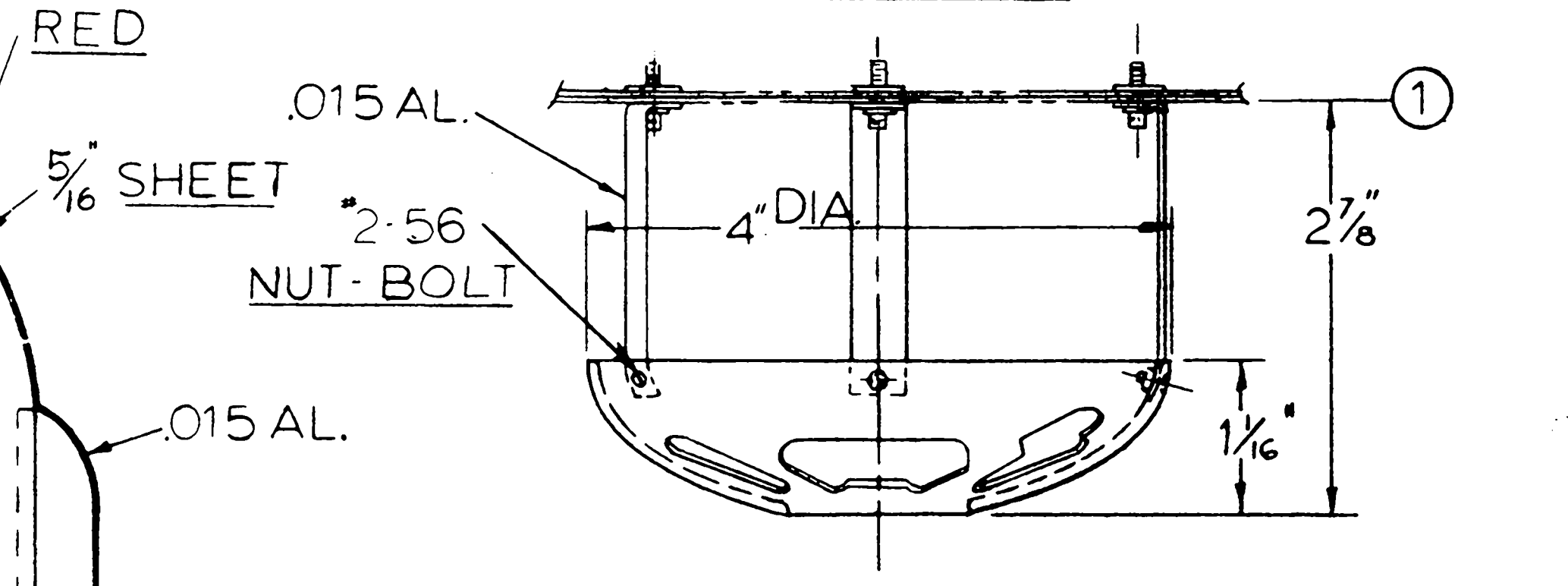
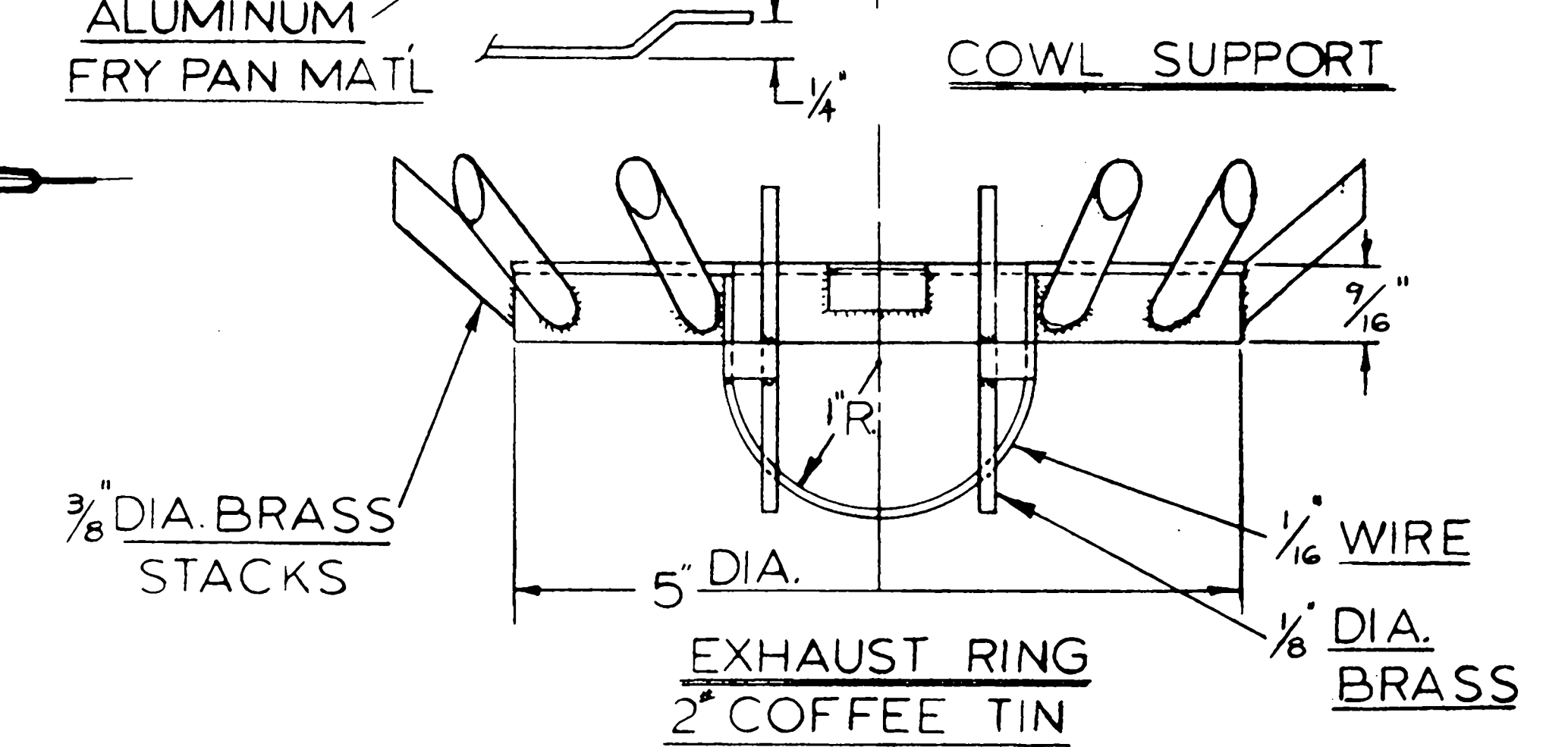
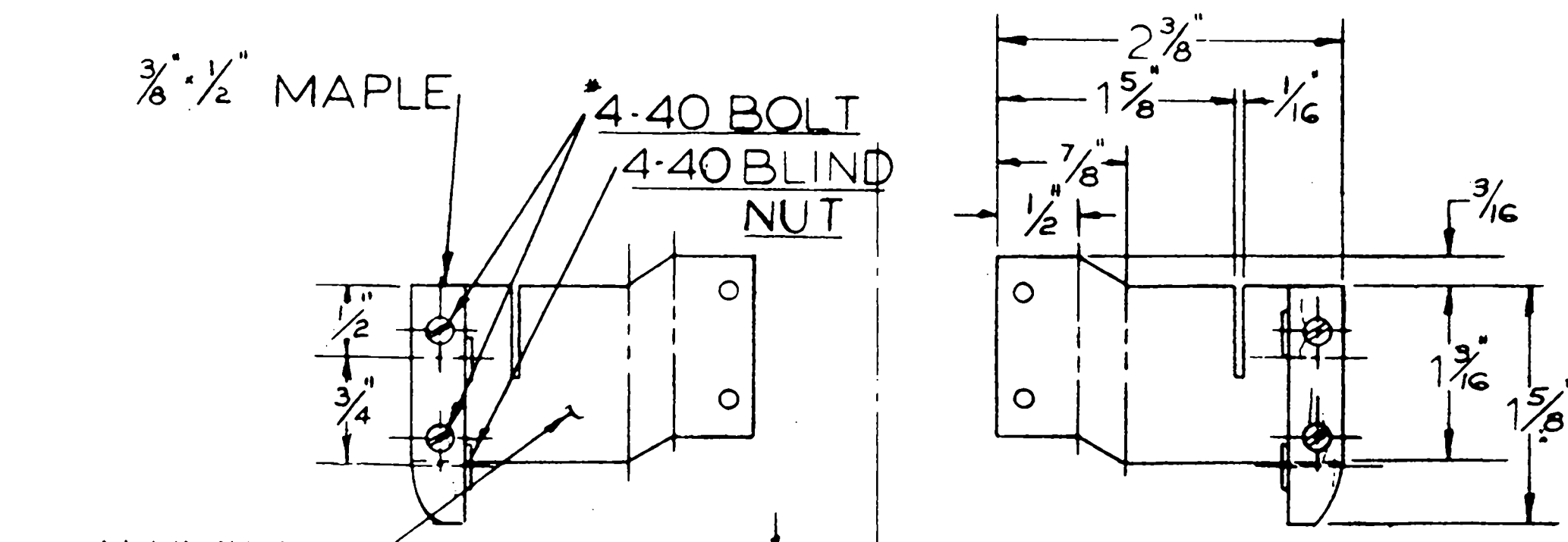


OIL COOLER  
ID COLOR

SPLIT 1/4" DIA.  
PLASTIC TUBE



ENYA 60<sup>R</sup>/<sub>6</sub>  
SHOWN

KRAFT  
13oz. TANK

1/16 PLY.  
CG.

ROBERTS'  
BELLCRANK

USS MACON  
U.S. NAVY

1/16 BALSMA FLOOR  
3/32 SHEETING

ID. COLOR

WHEEL PANT  
BUILT UP 1/2 BALSMA  
SHEET

CLEAR BEAD  
BLUE  
WHITE  
RED

1/4 x 1/2 BALSMA  
1/8 x 1/4 BALSMA

1/16 SHEET

F9C-2  
5/16 SHEET

0.015 AL.

2-56  
NUT-BOLT

HEAD REST  
1/4 SHEET

BALSMA BLOCK

BALSMA  
1/16 DIA.  
MUSIC WIRE

"WILLIAMS" WRIGHT  
CYLINDERS

1" DIA. WHEEL

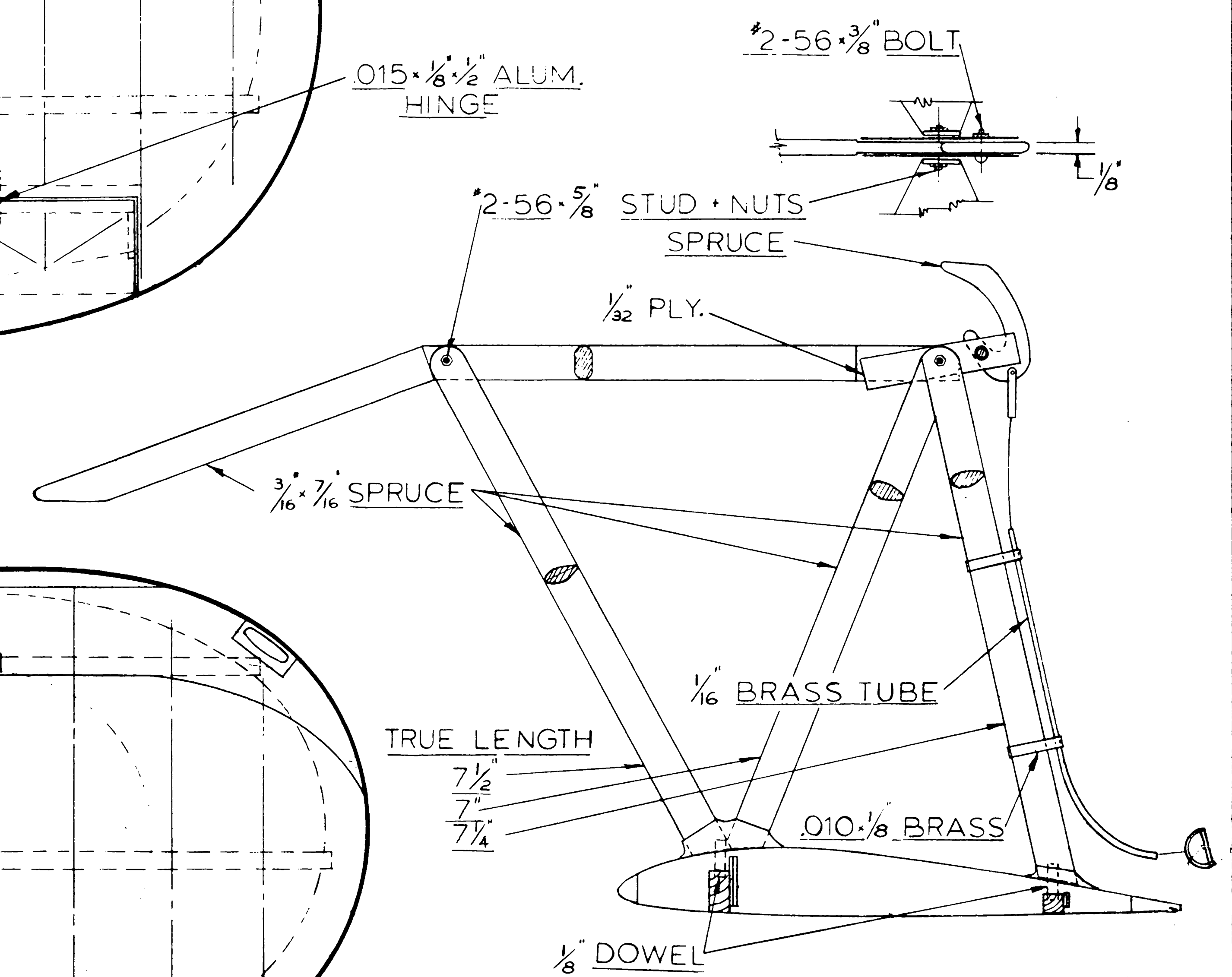
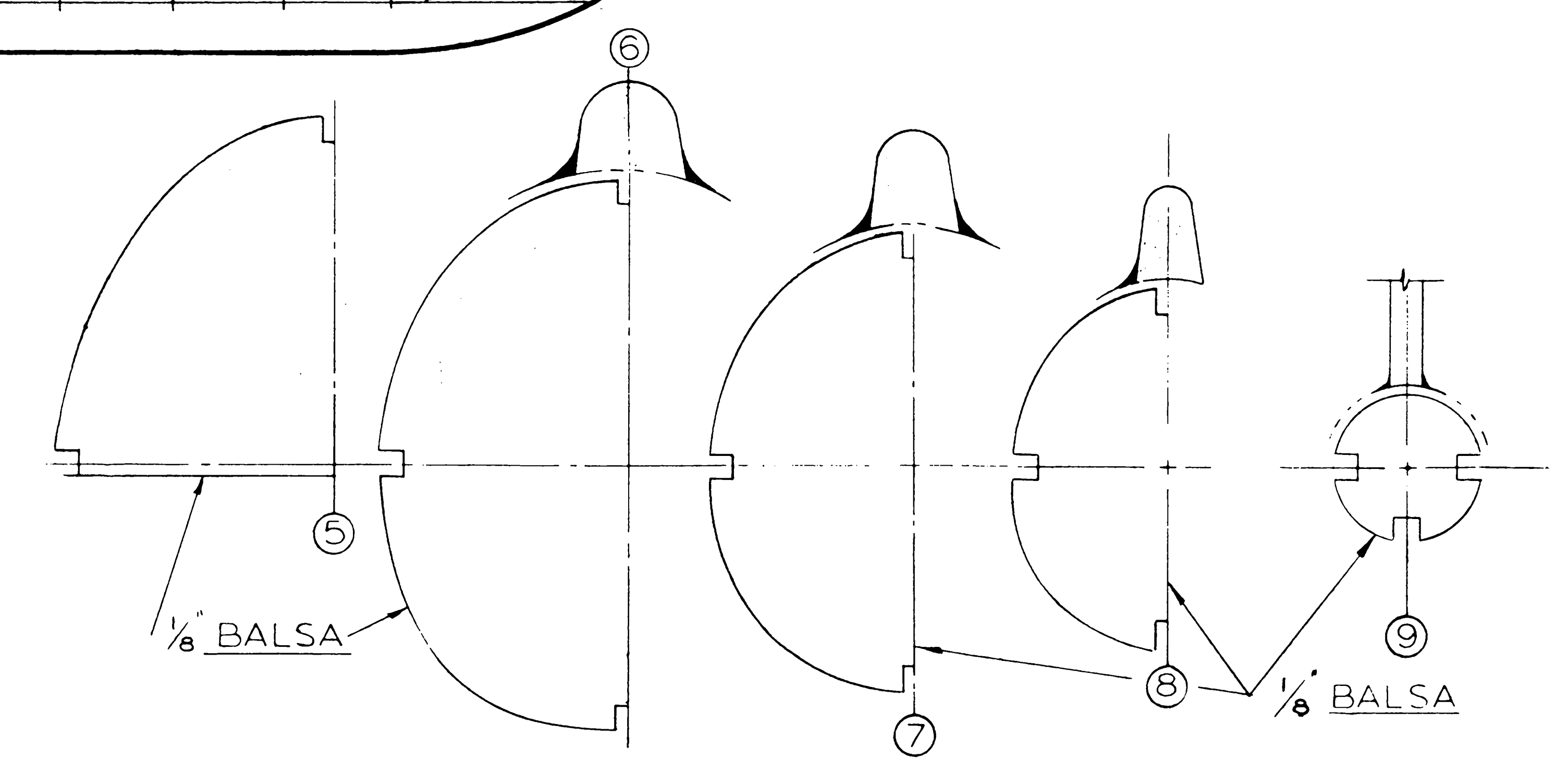
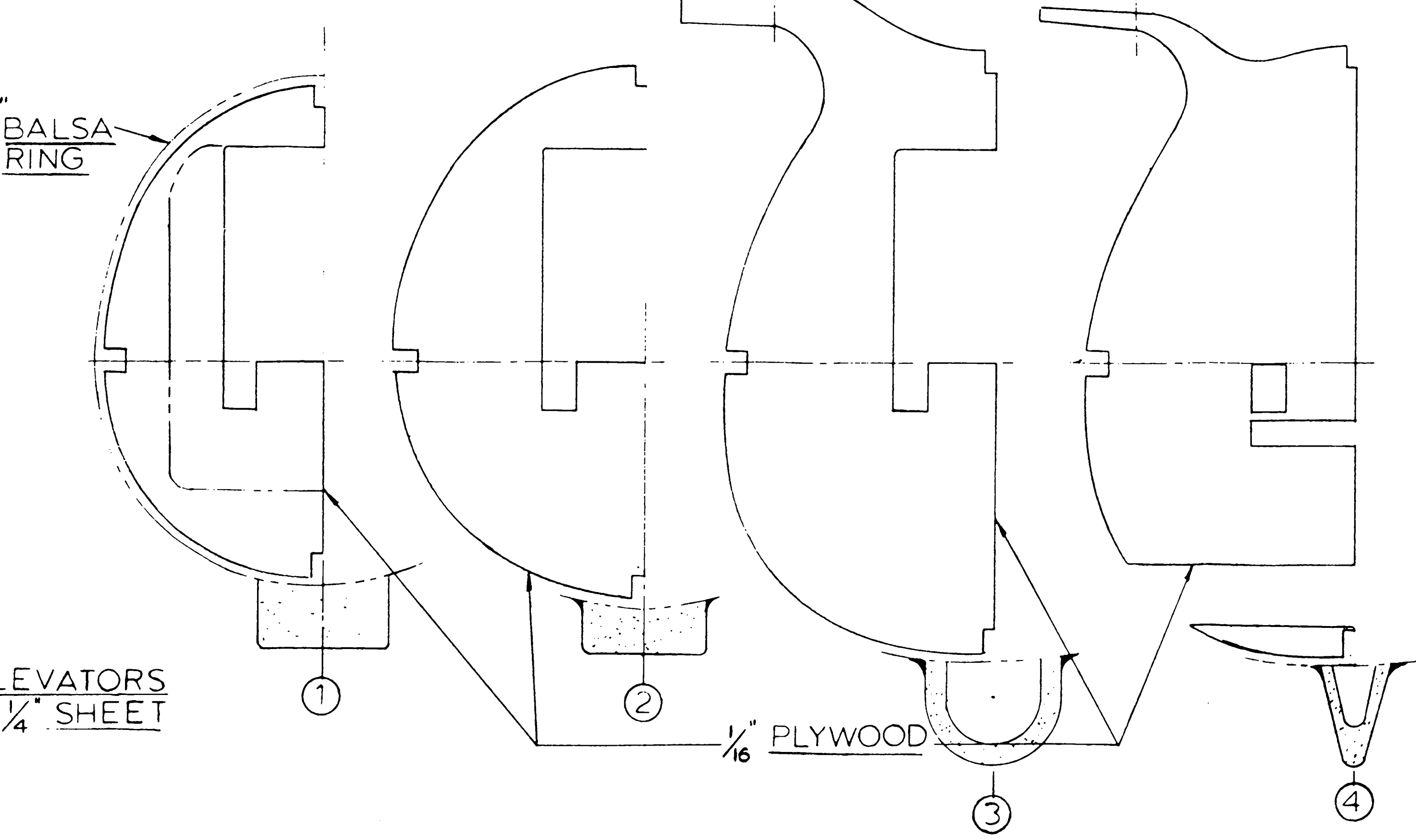
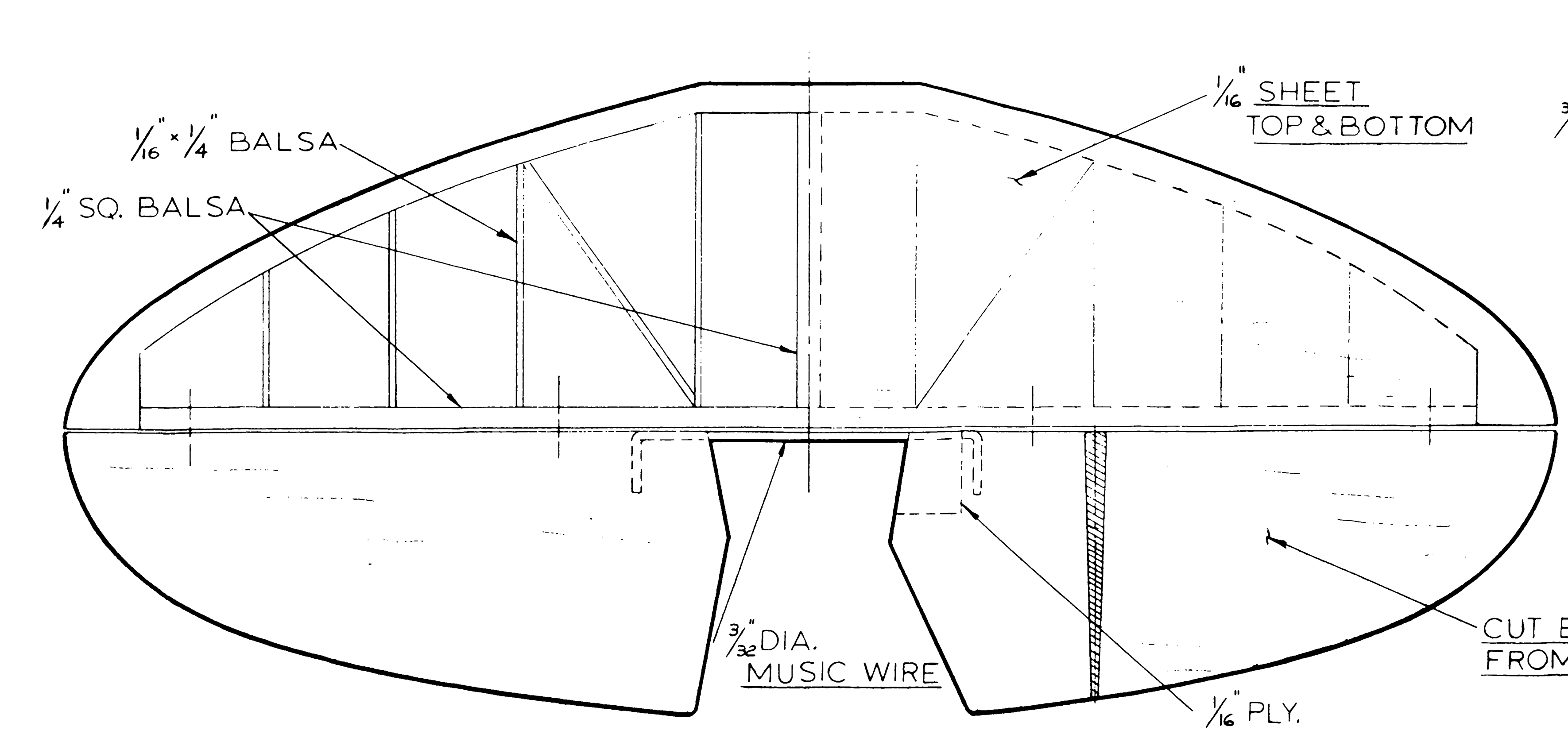
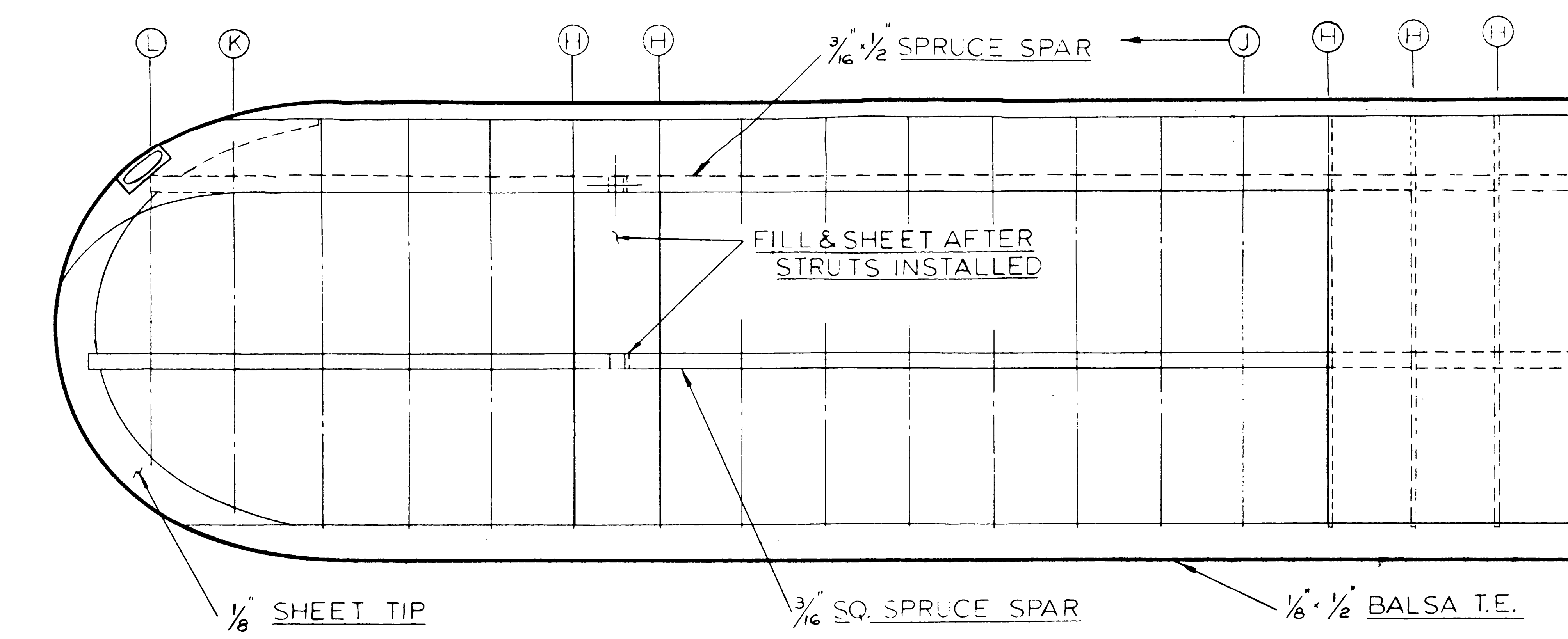
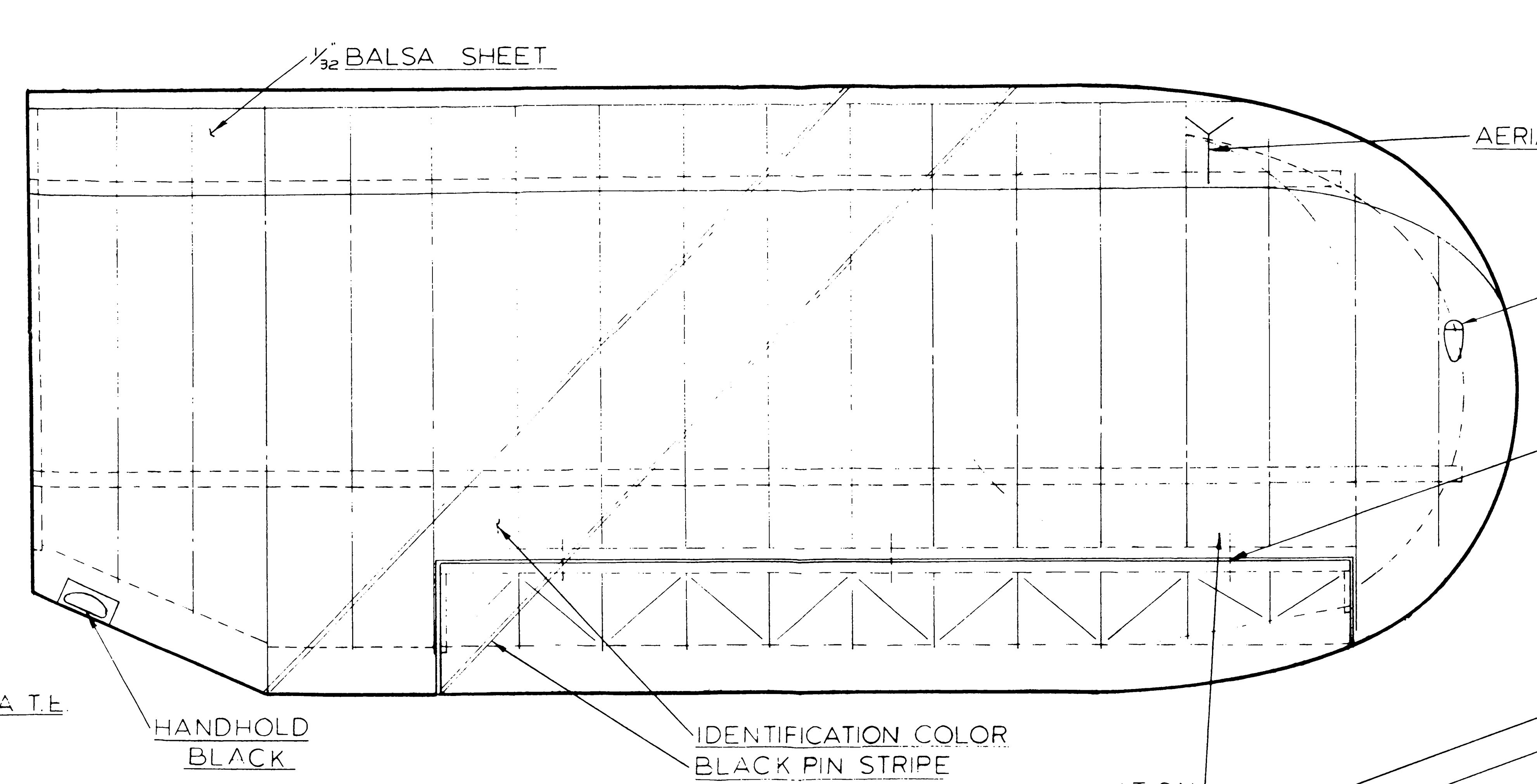
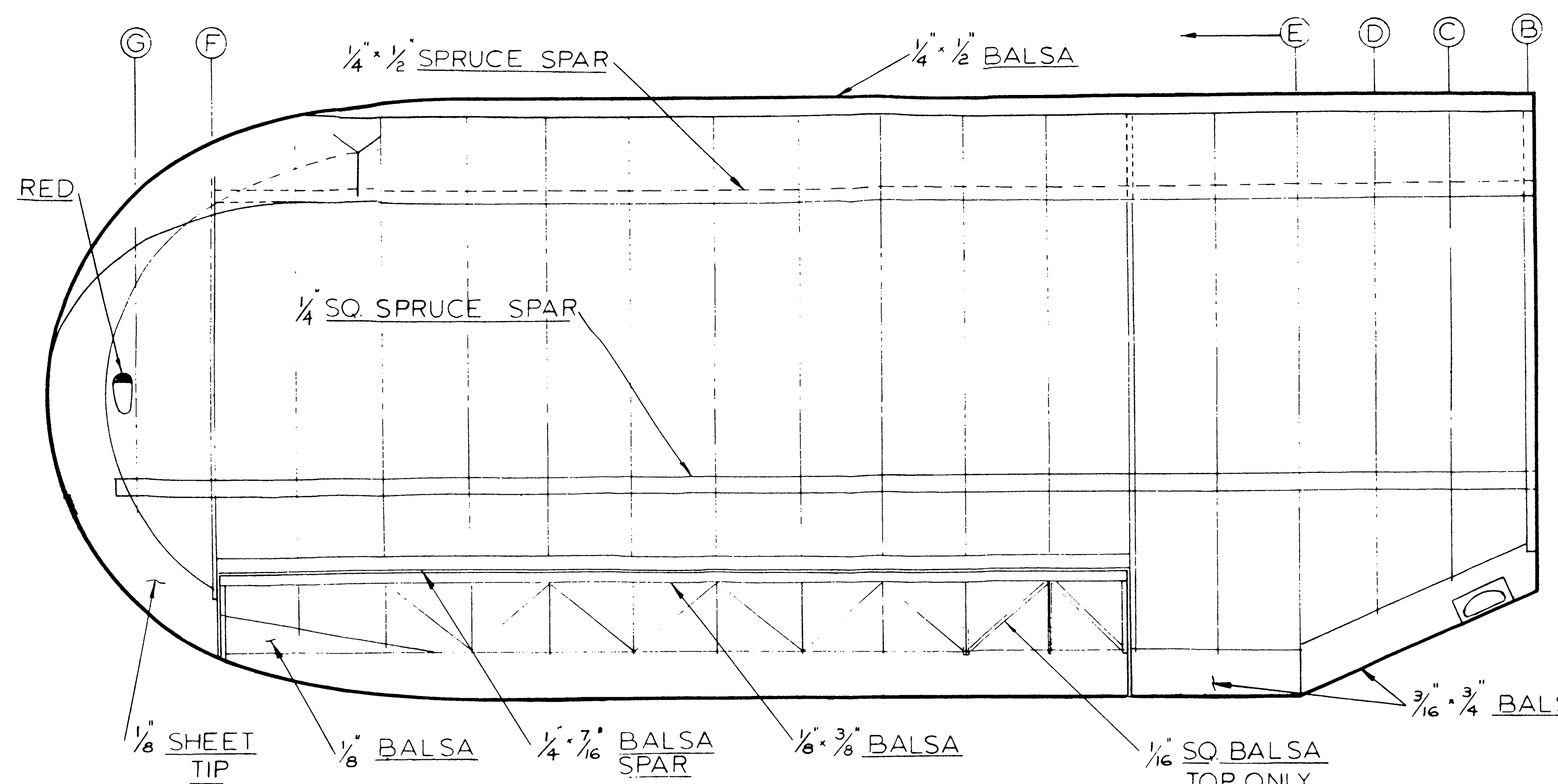
WIND SCREEN  
1/16 PLEXIGLAS

SCALE  
ENGINE & COWL  
COWL IS A 7" WEAR-EVER FRY PAN  
\*28017- CUT & RIVET AS SHOWN

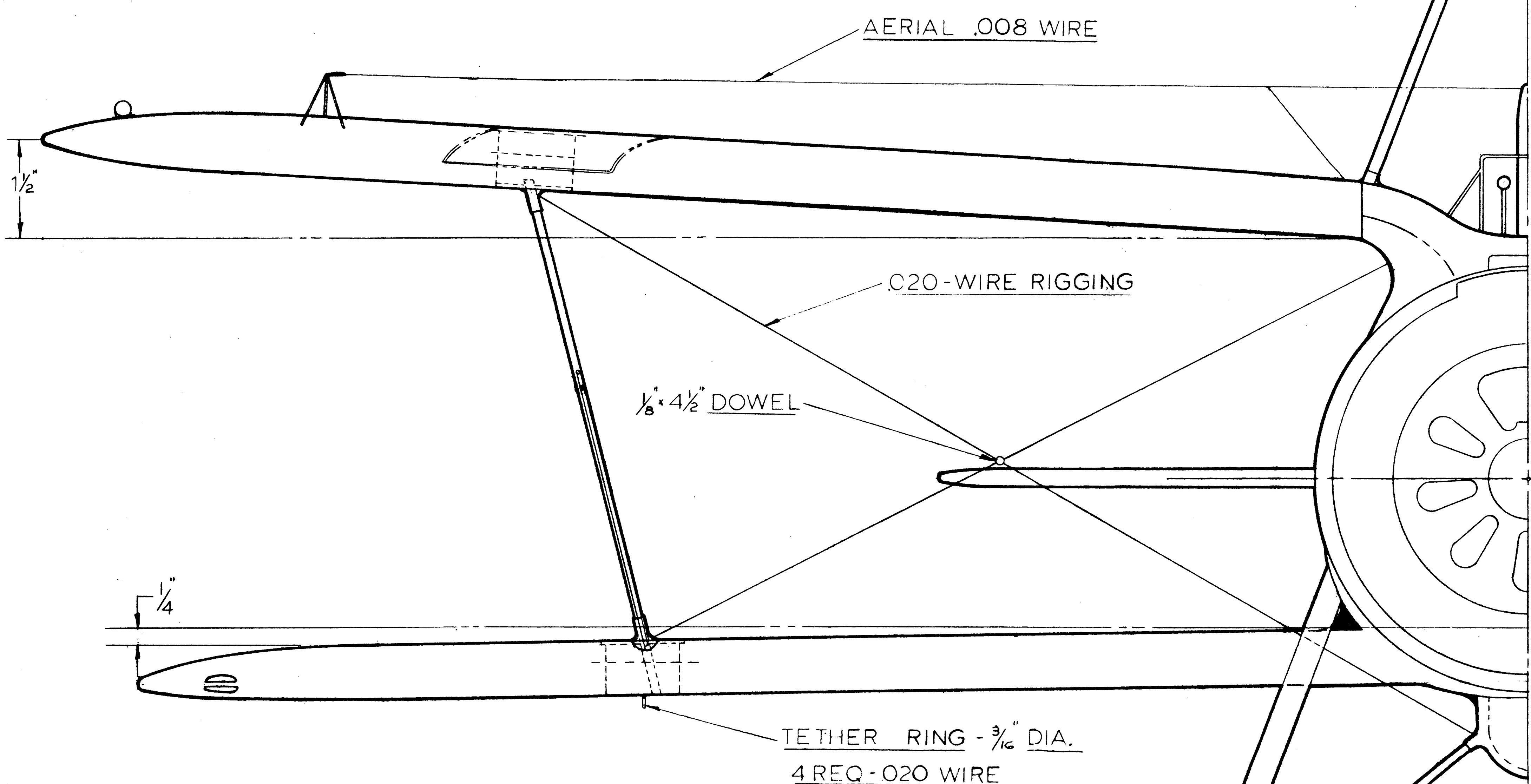
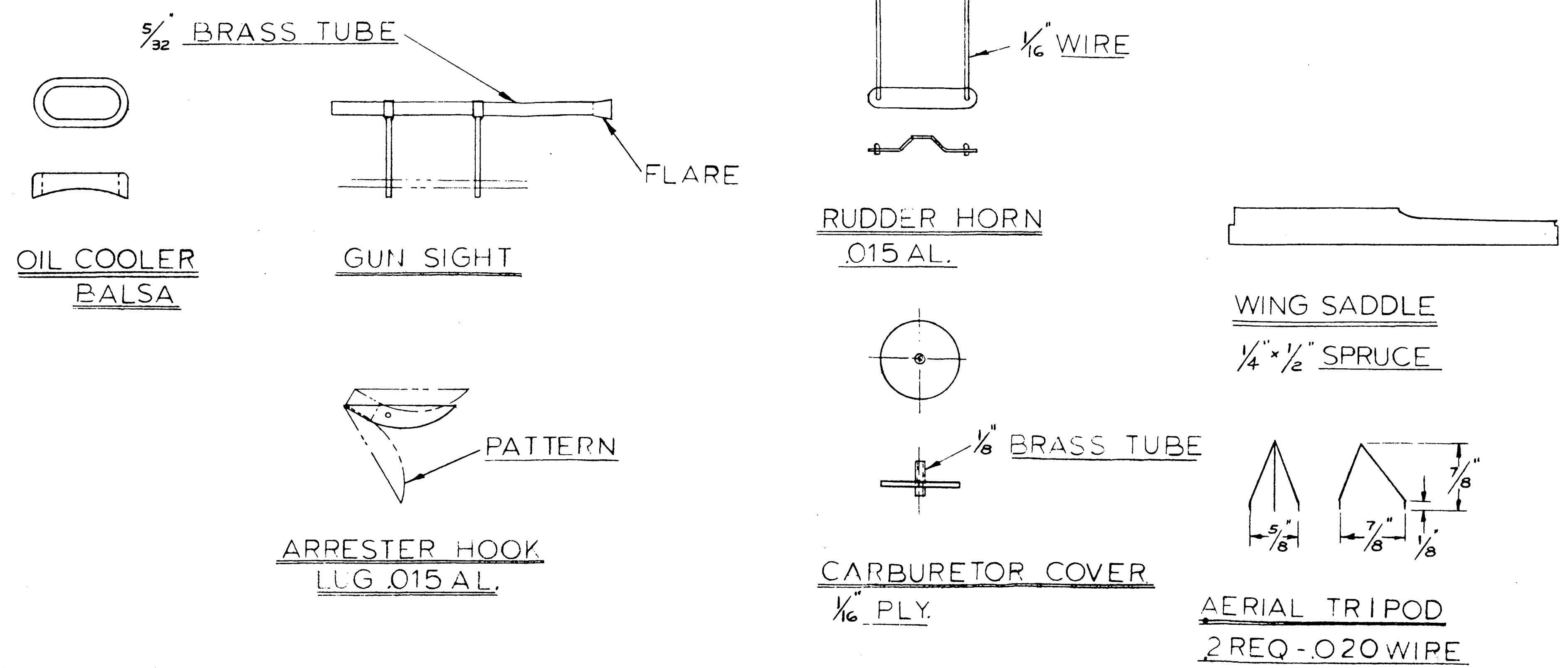
**CURTISS F9C-2 "SPARROW HAWK"**

DRAWN BY C.F. SMITH  
SCALE: 1 3/4" = 1'0"  
SHEET 1 OF 3

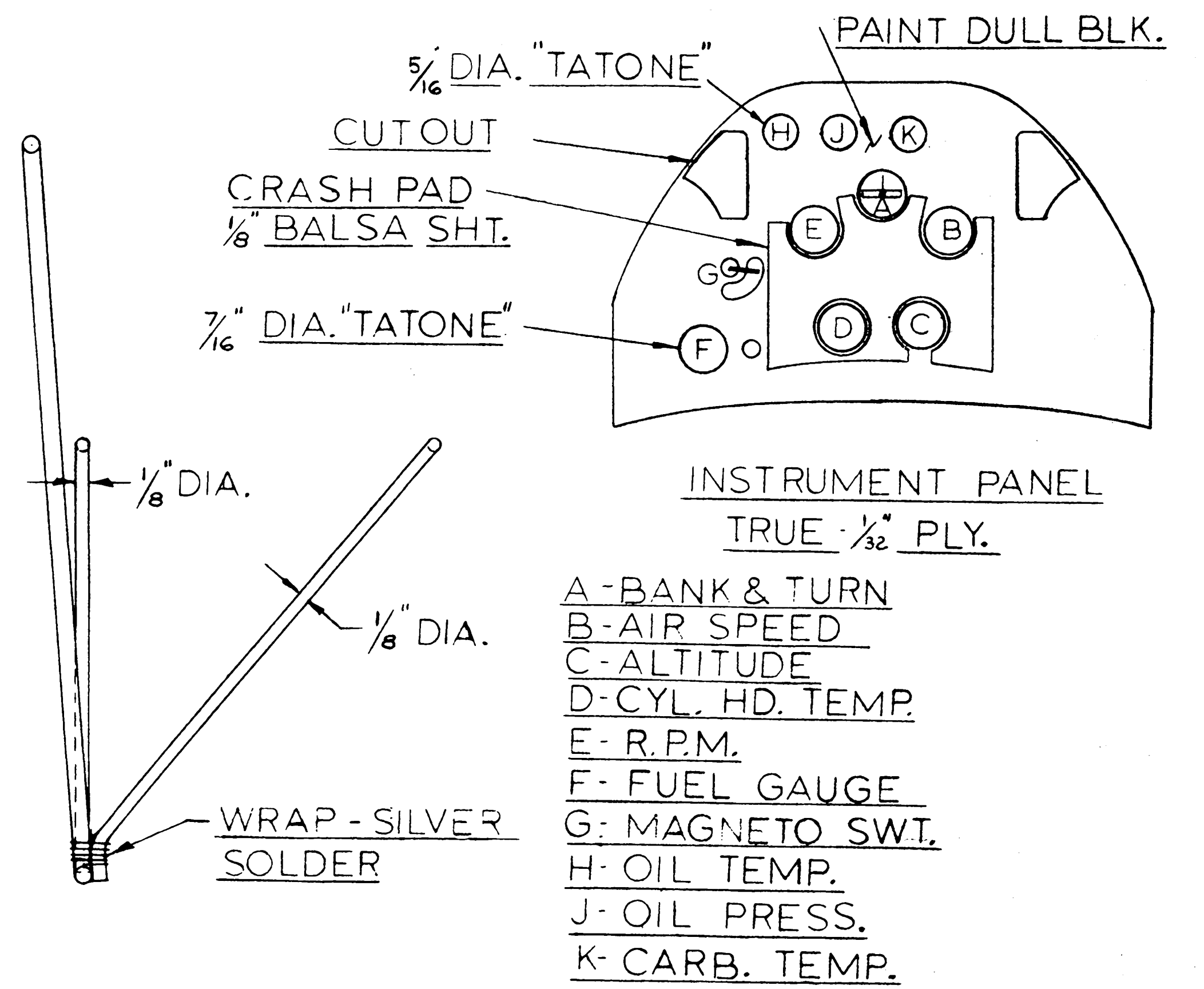
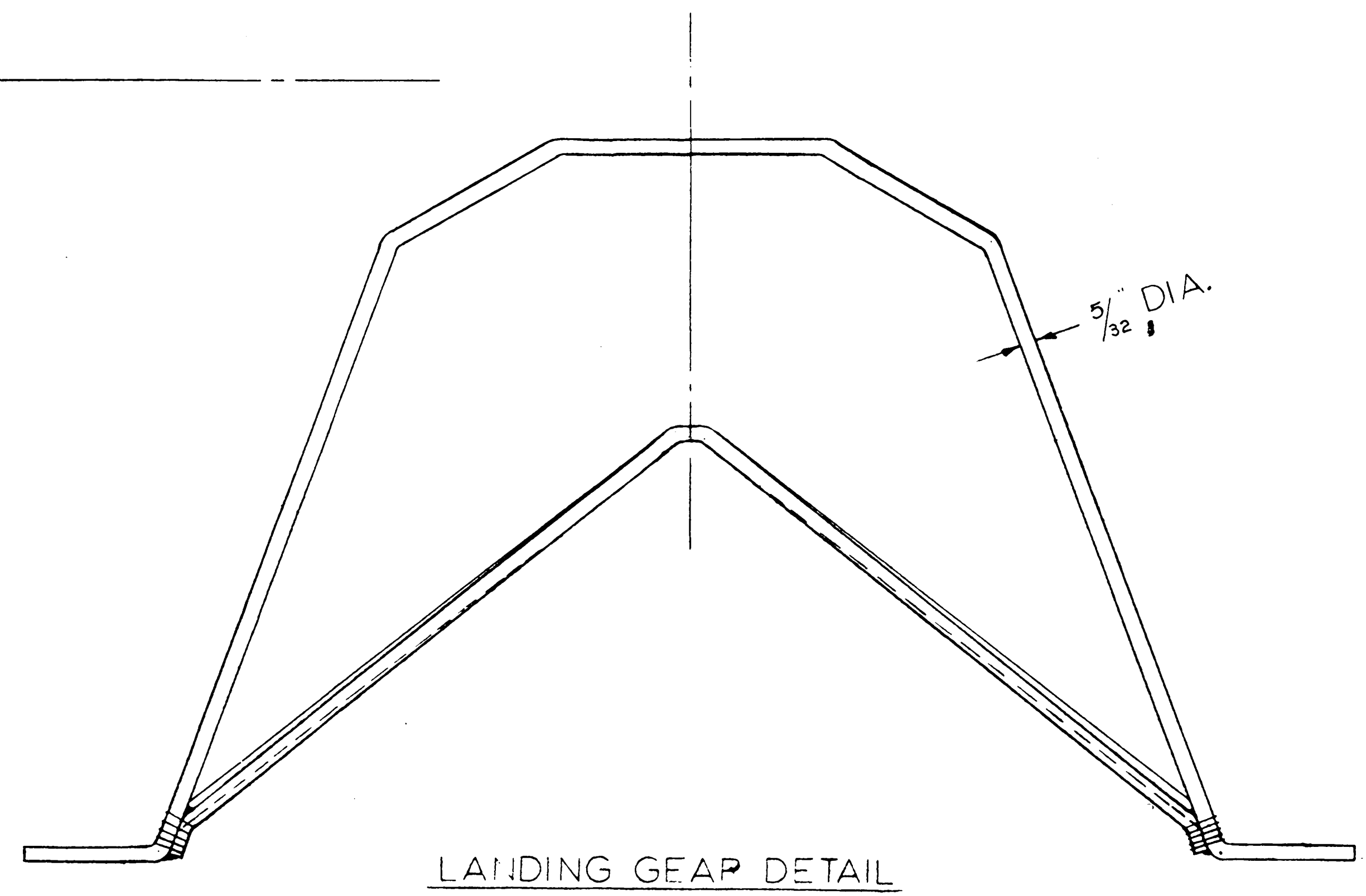
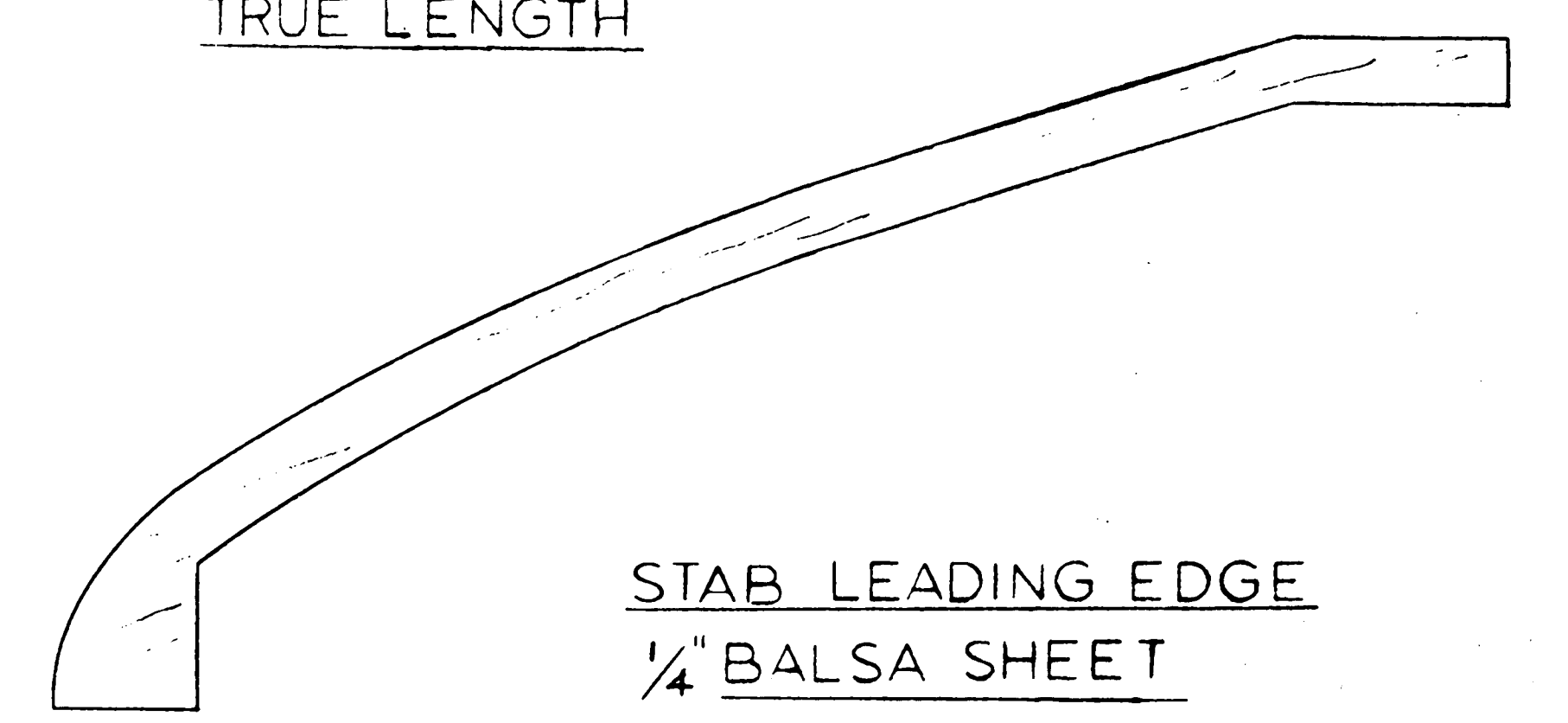
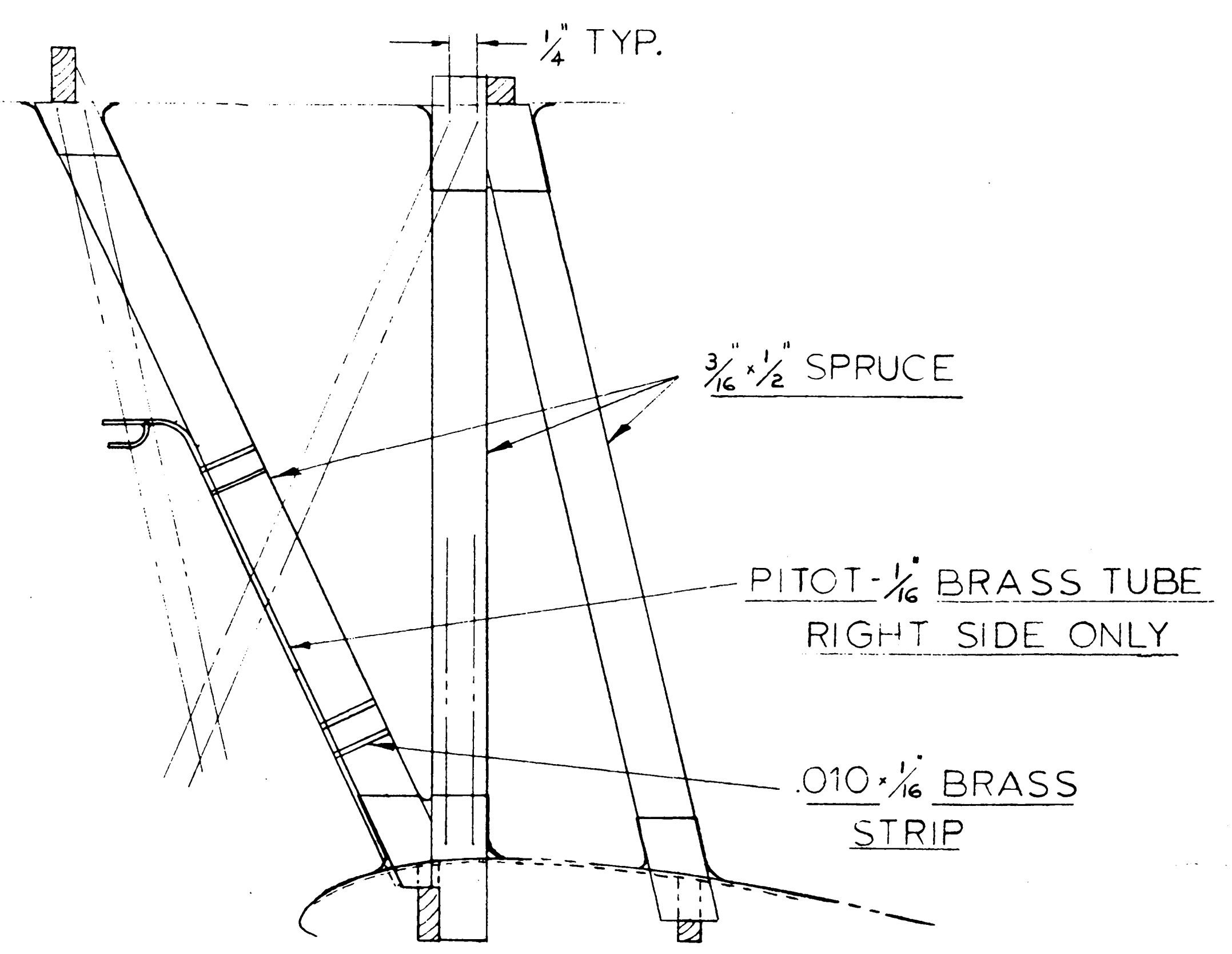
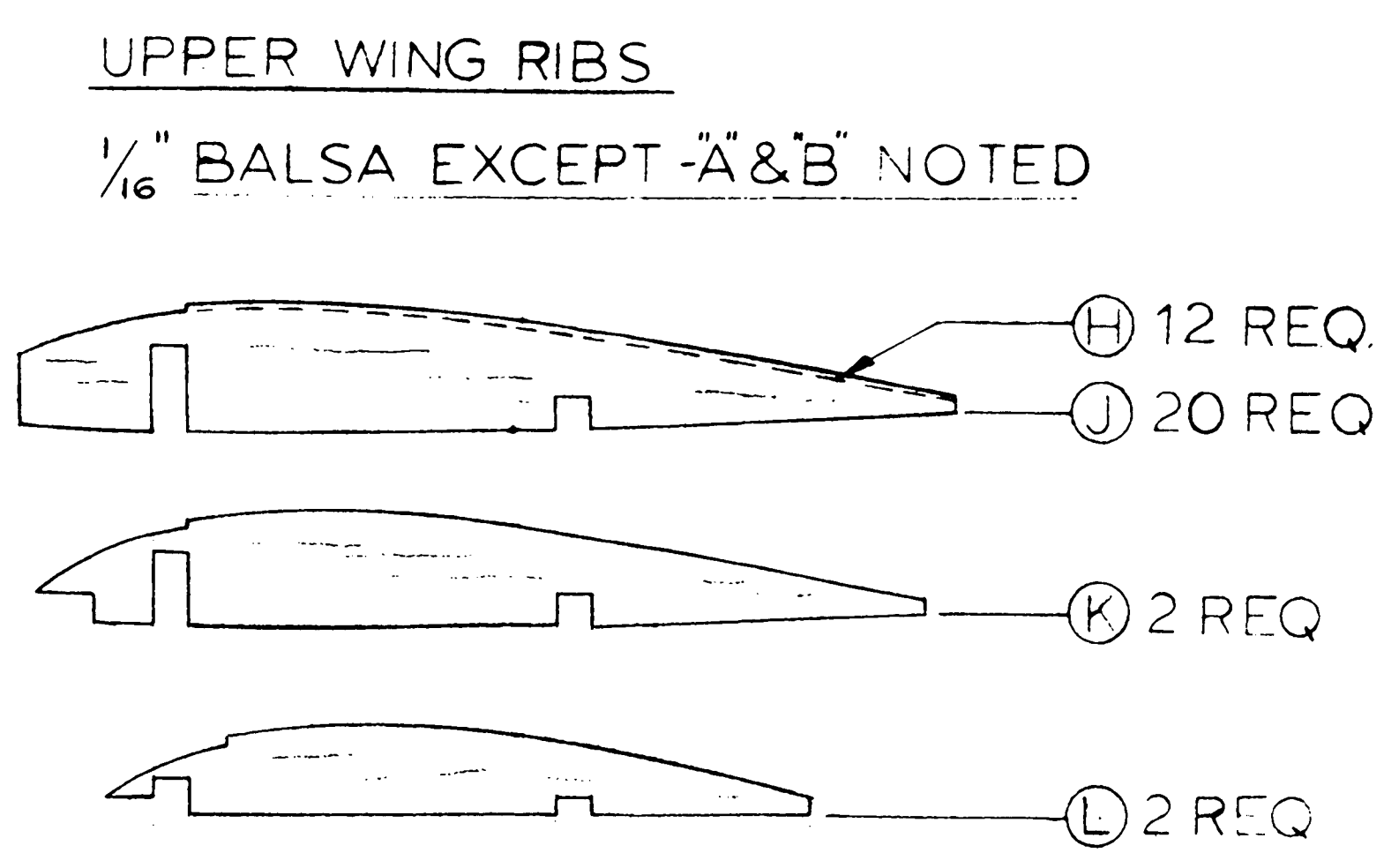
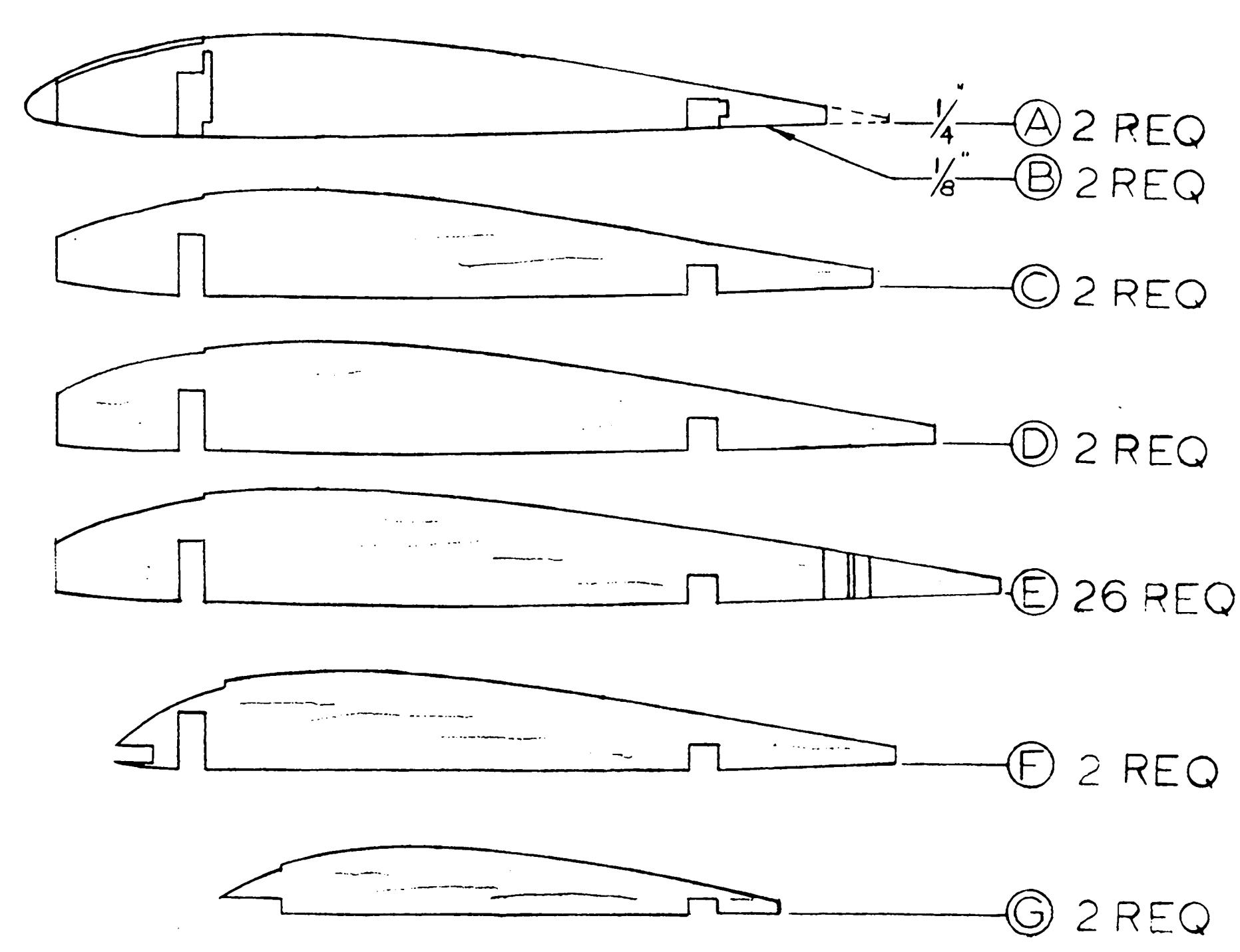
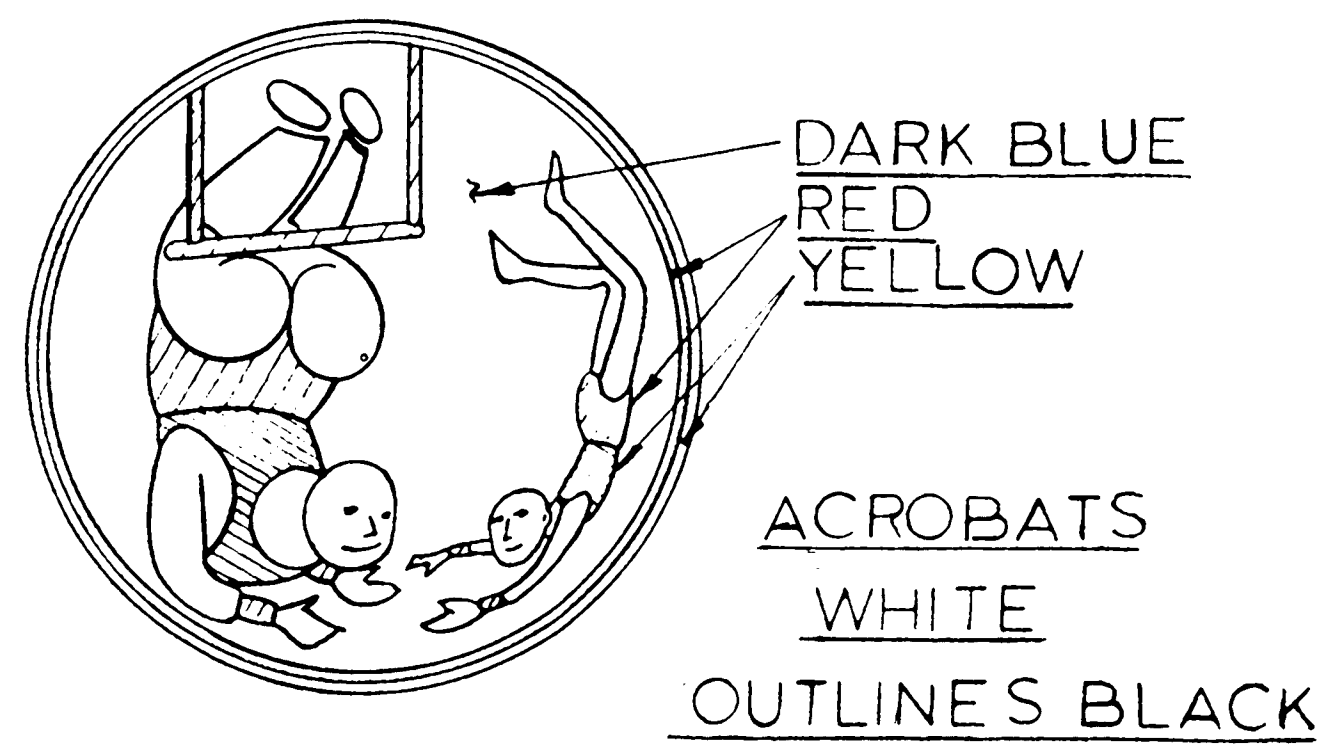
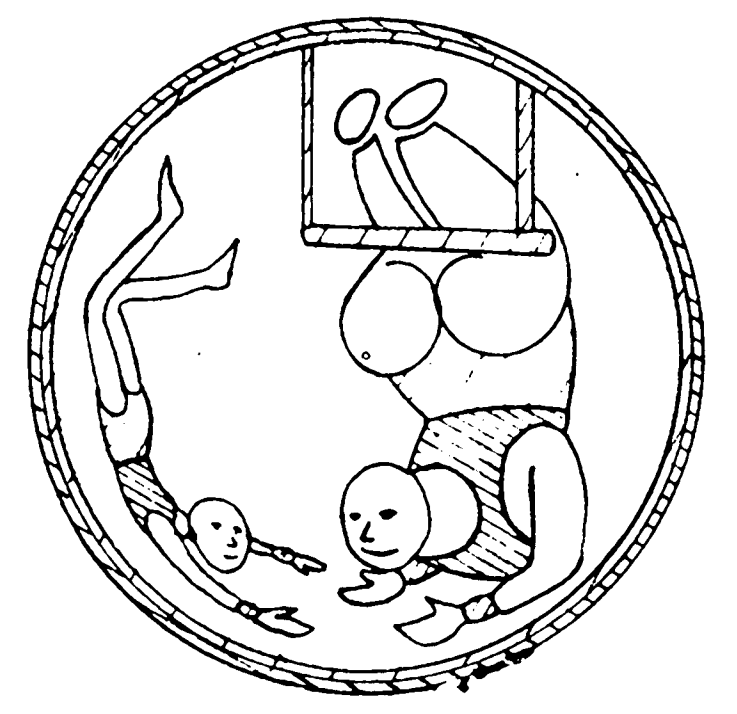
0 1 2 3 4 5 6  
inches  
**MODEL BUILDER**  
1105 Sepoon, Santa Ana, California 92701  
magazine  
Plan No. 3751-A



**CURTISS F9C-2 "SPARROW HAWK"**  
 DRAWN BY C.F. SMITH  
 SCALE: 1 3/4" = 1'0"  
 SHEET 2 OF 3



- $\frac{5}{16}$ " 9056 - RED  
 9057 - WHITE  
 9058 - BLUE  
 9059 - BLACK  
 9060 - WILLOW GREEN  
 9061 - LEMON YELLOW  
 IDENTIFICATION COLOHS  
 F9C-2 "SPARROWHAWK'S"  
 TOP TOP WING - YELLOW  
 WINGS SILVER  
 ALL OTHER SURFACES LIGHT GRAY



**CURTISS F9C-2 "SPARROW HAWK"**

DRAWN BY C.F. SMITH  
 SCALE: 1 3/4" = 1'0"  
 SHEET 3 OF 3