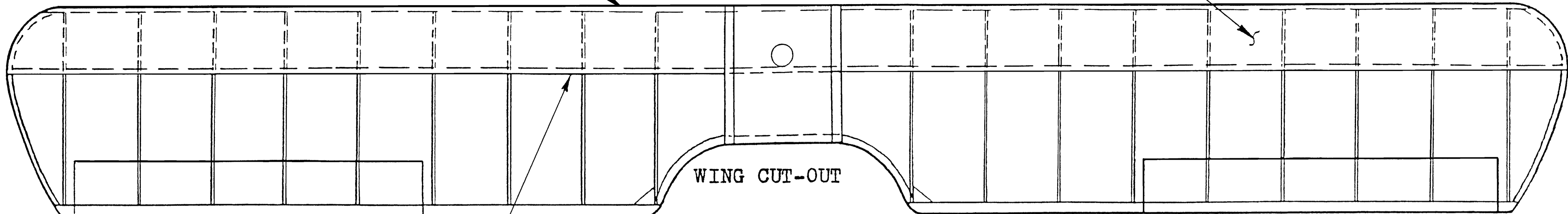
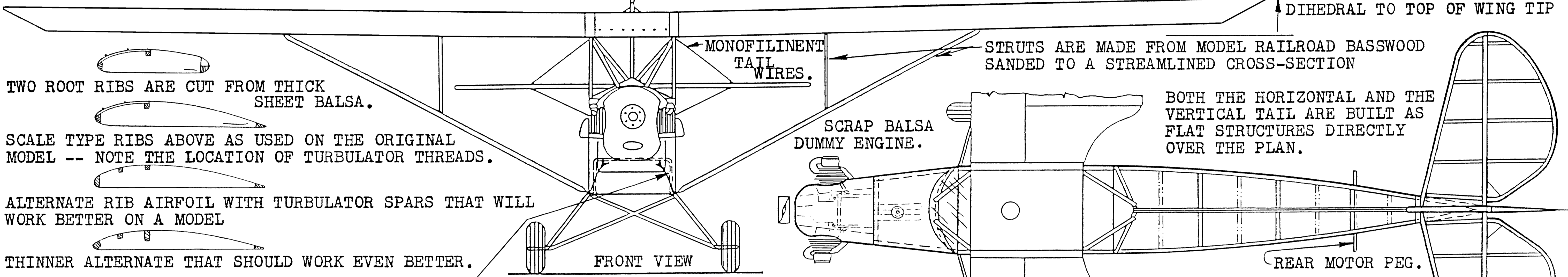


USE HARD Balsa FOR THE LEADING EDGE STICK. USE SOFT Balsa FOR THE LEADING EDGE SHEETING. WING TIPS ARE LAMINATED FROM THIN BASSWOOD STICKS. AS ARE THE TAIL OUTLINES AND THE WING CENTER CUT-OUT. MAKE FORMS FOR EACH OUTLINE FROM SHEET Balsa CUT TO MATCH THE INSIDE CONTOUR. WAX THE FORMS TO PREVENT THE LAMINATING ADHESIVE FROM STICKING TO THE FORM. THEN SELECT THREE OR FOUR THIN STICKS AND LAMINATE THEM AROUND THE FORMS USING WHITE GLUE AS ADHESIVE.



USE MEDIUM Balsa FOR THE WING SPAR. RIBS ARE ALL CUT FROM MEDIUM SHEET Balsa. USE BLACK FELT PEN TO MAKE AILERON OUTLINE. CABANE STRUTS AND LANDING GEAR BRACE STRUTS ARE MADE FROM HARDWOOD OR BAMBOO DOWEL (ROUND CROSS-SECTION).



TWO ROOT RIBS ARE CUT FROM THICK SHEET Balsa.

SCALE TYPE RIBS ABOVE AS USED ON THE ORIGINAL MODEL -- NOTE THE LOCATION OF TURBULATOR THREADS.

ALTERNATE RIB AIRFOIL WITH TURBULATOR SPARS THAT WILL WORK BETTER ON A MODEL

THINNER ALTERNATE THAT SHOULD WORK EVEN BETTER. ALL OTHER RIBS ARE CUT FROM THIN SHEET Balsa

BEND THE LANDING GEAR WIRE TO MATCH THE FRONT VIEW. THE WIRE IS NOT CEMENTED TO THE GEAR FAIRINGS.

STRUTS ARE MADE FROM MODEL RAILROAD BASSWOOD SANDED TO A STREAMLINED CROSS-SECTION

BOTH THE HORIZONTAL AND THE VERTICAL TAIL ARE BUILT AS FLAT STRUCTURES DIRECTLY OVER THE PLAN.

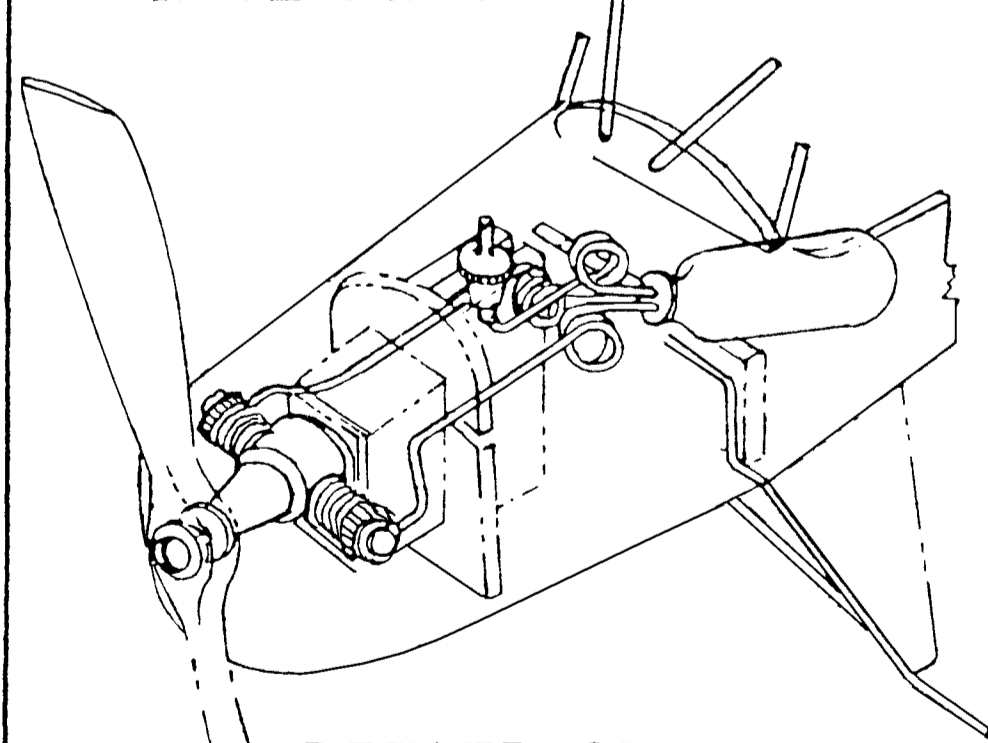
SCRAP Balsa DUMMY ENGINE.

PLAN VIEW

COWL IS MADE FROM FOUR PIECES OF BLOCK Balsa, CARVE TO SHAPE.

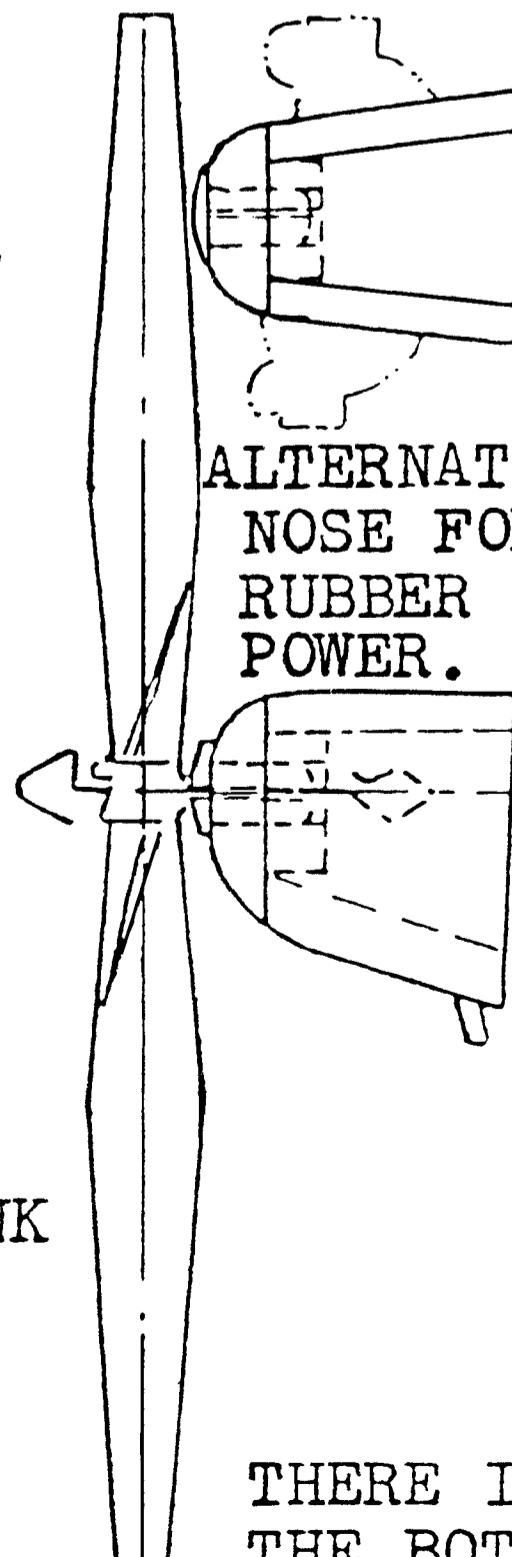
TXE		
Cracker Jack Sport Plane		
MODEL-2D	ENGINE-DAF 85P	DESIGNER/BUILDER <i>Pete Plumb</i>
Span-28ft	Climb-800fpm	
Chord-3.75ft	Cruise-75MPH	
Area-105 sq/ft	Stall-36MPH	
Aspect Ratio-7.46		
Airfoil-NACA 4415		
Stab Area-17.6 sq/ft		
Length-17ft 5in		
Empty Wt.-335 lbs.		
Gross Wt.-575 lbs.		
G-Rating-+6,-3		
Fuel Cap.-5.5 gal		
Engine HP-32 at 3600 RPM		

USE A COMMERCIAL PLASTIC PROPELLER AND A PLASTIC THRUST BUTTON. THE FRONT NOSE BLOCK IS REMOVEABLE.



DETAIL OF BROWN TWIN CYLINDER CO-2 ENGINE INSTALLATION. 3cc TANK SHOWN, BUT LARGER TANK WILL FIT EASILY.

ALTERNATE NOSE FOR RUBBER POWER.



LANDING GEAR FAIRING AND FUSELAGE FORMER DETAILS, CUT FROM SHEET Balsa.

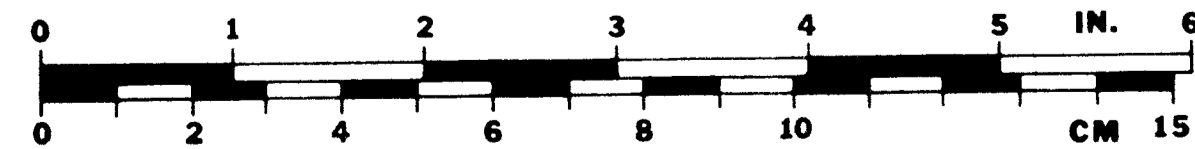
THIN PLASTIC WINDSHIELD, NO SIDE OR BACK WINDOWS

SINGLE TOP STRINGER.

CO-2 ENGINE INSTALLATION NOSE

FUSELAGE SIDE FRAME IS SHEET Balsa FORWARD AND STICKS (SHOWN HATCHED) AFT. NO MOTOR PEG SUPPORT REQUIRED FOR CO-2.

USE BALSAWOOD WHEELS.



MODEL BUILDER magazine
621 West 19th St., Costa Mesa, CA 92627

Plan No: 2843

Rubber Scale

THE REAL PLANE WAS DESIGNED AND BUILT BY PETE PLUMB.

the CRACKER JACK sport plane MODEL BY *Walt Mooney*

THERE IS A SINGLE STRINGER ON EACH SIDE AND ON THE BOTTOM CENTERLINE OF THE FUSELAGE.