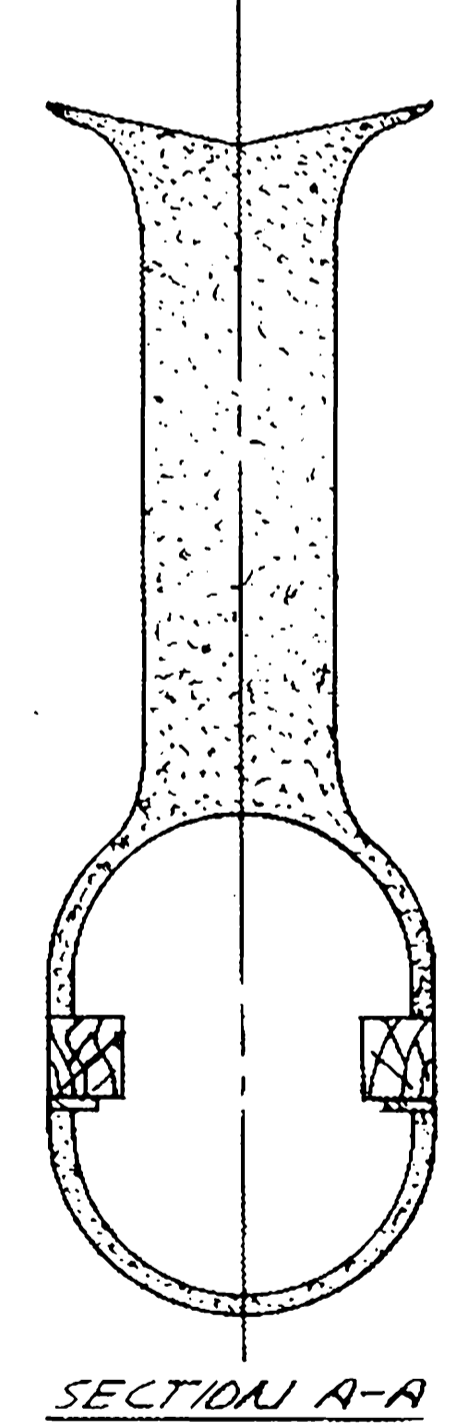
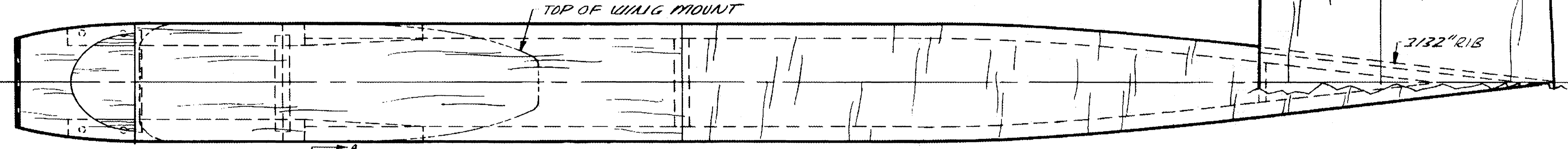


- WING CONSTRUCTION**
1. CUT OUT $\frac{1}{2}$ SHAPE L.E. & T.E.
 2. SOAK TOP IN HOT WATER.
 3. BIND TO JIG W/ GAUSE.
 4. BAKE
 5. ADD RIBS AS SOON AS IT DRIES.
 6. JOIN AT CENTER

WING
 1/4" X 8" X 24" QUARTER GRAIN Balsa
 (6 LBS. PER CU. FT.)

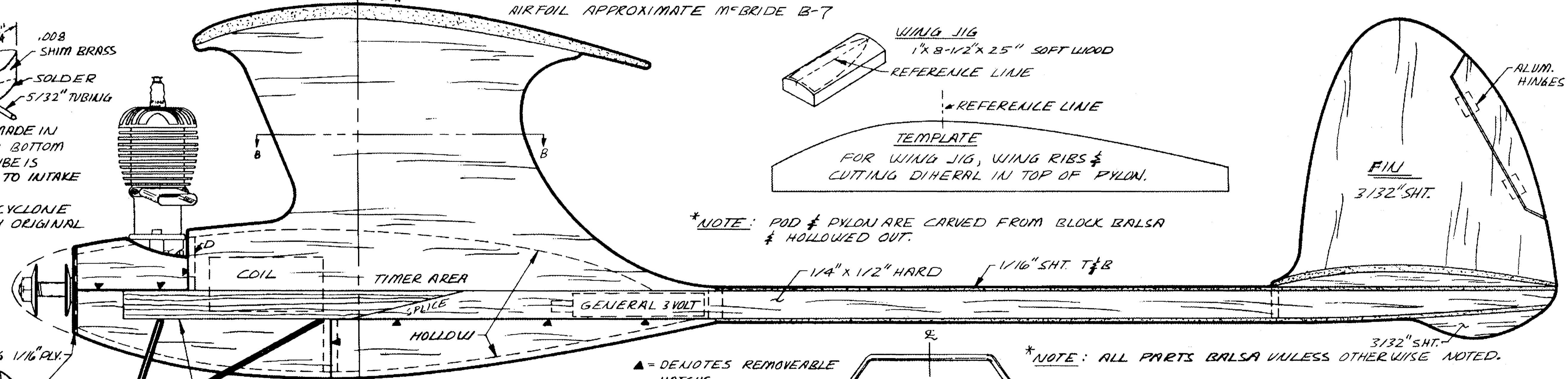
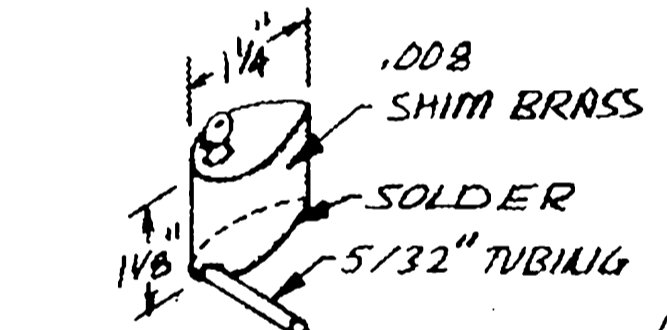
STAB.
 1/8" X 5" X 20" Balsa

*NOTE: ENGINE MOUNT MIGHT HAVE TO BE CARVED OUT OR FUSELAGE WIDENED TO SUIT ENGINE USED.



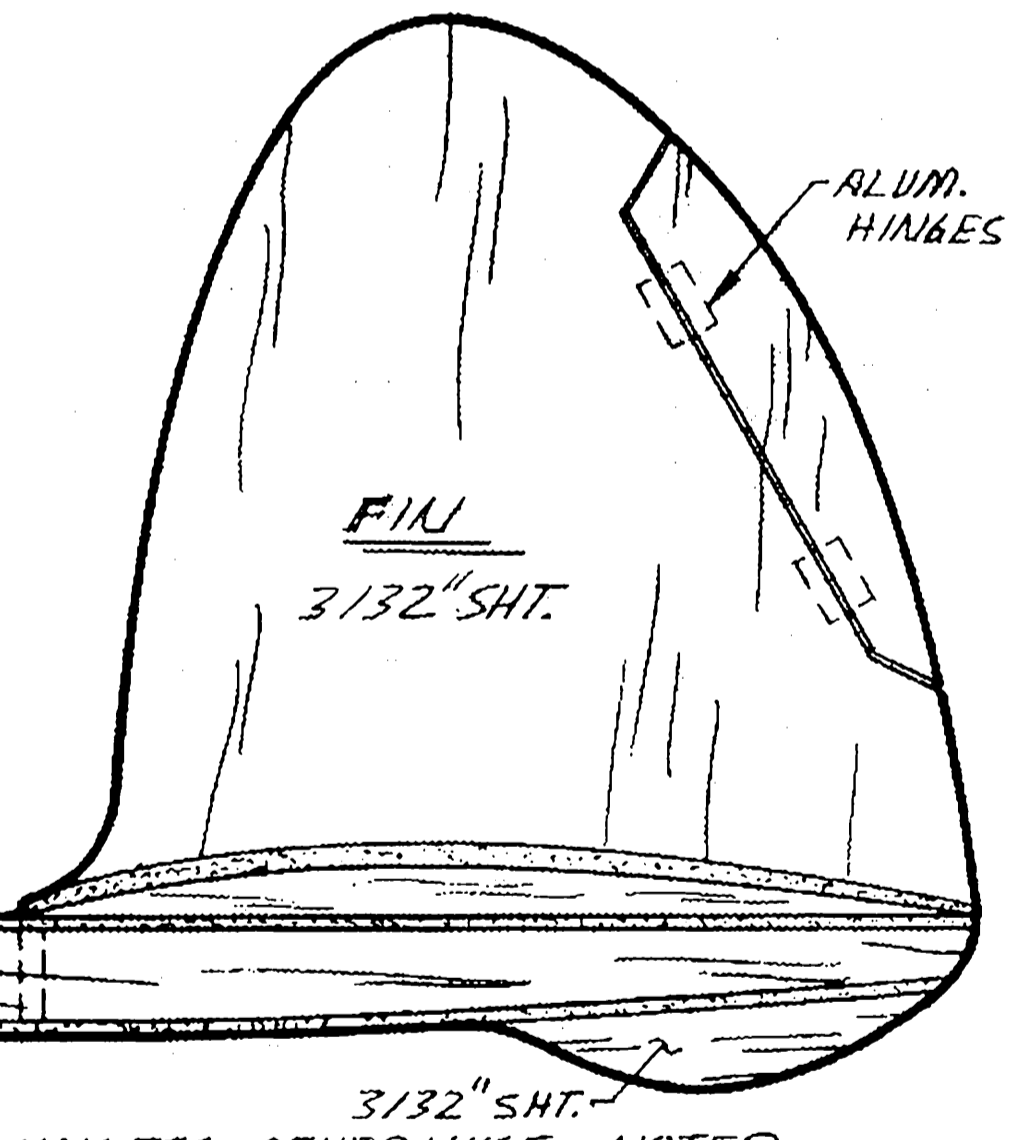
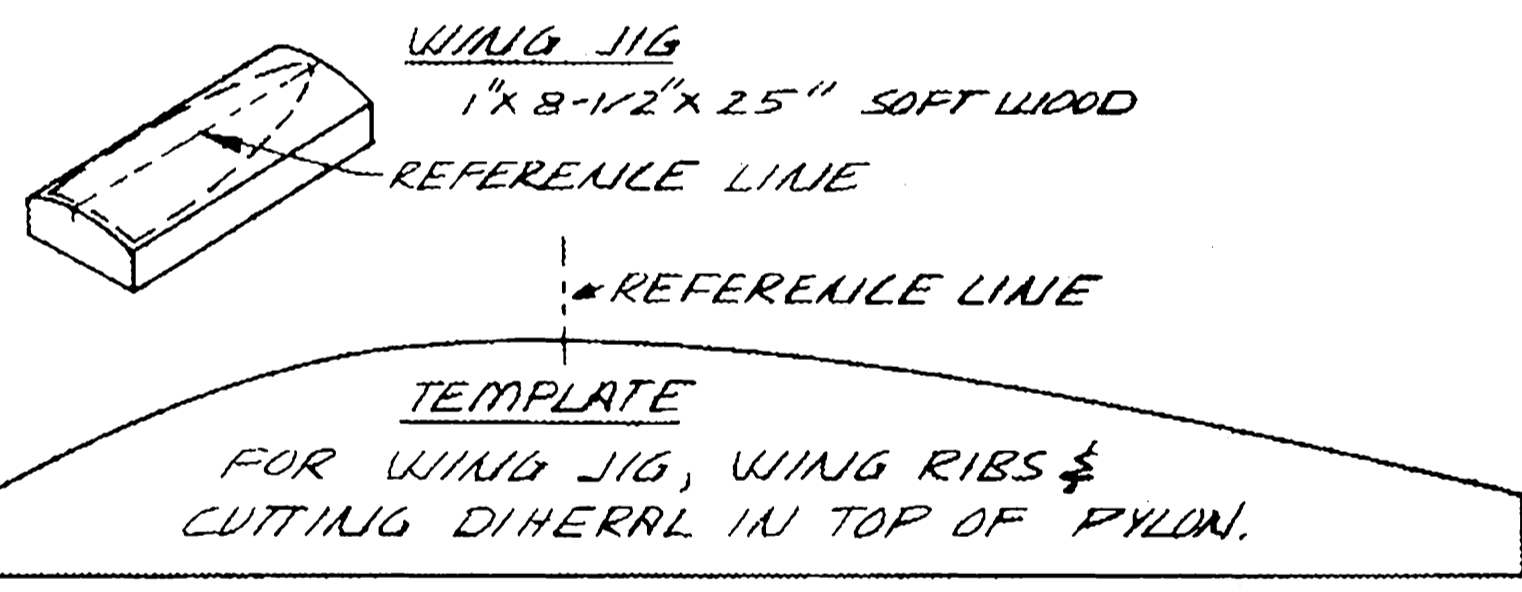
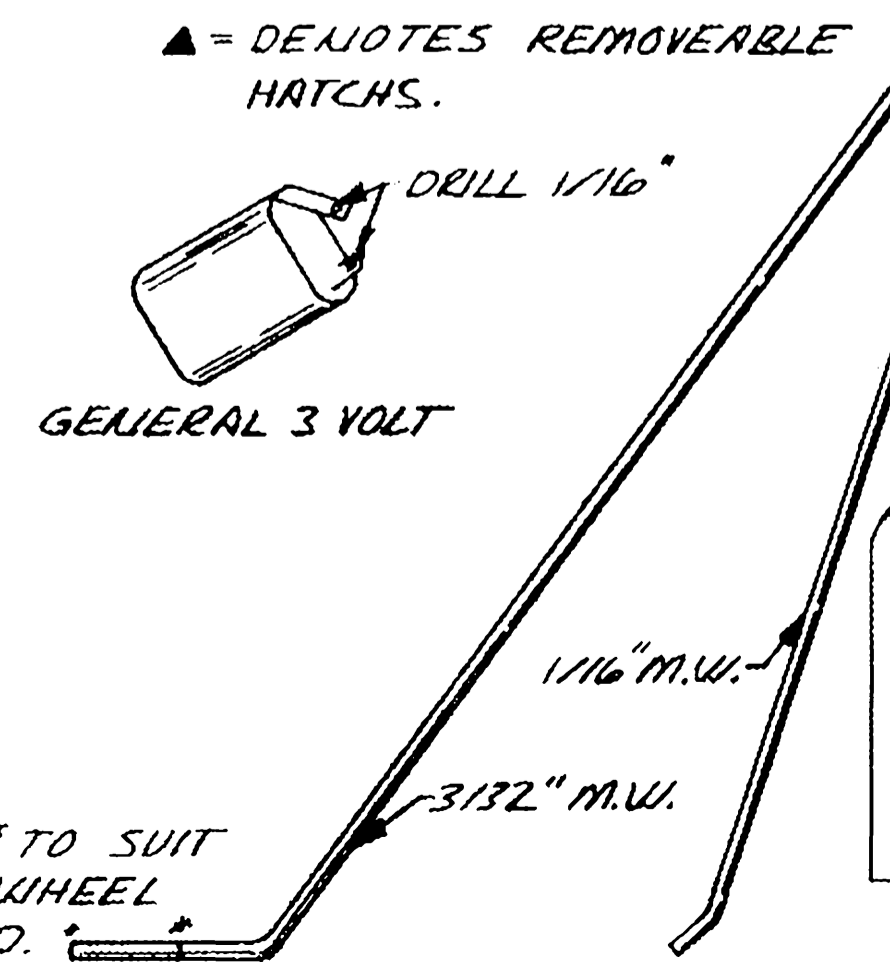
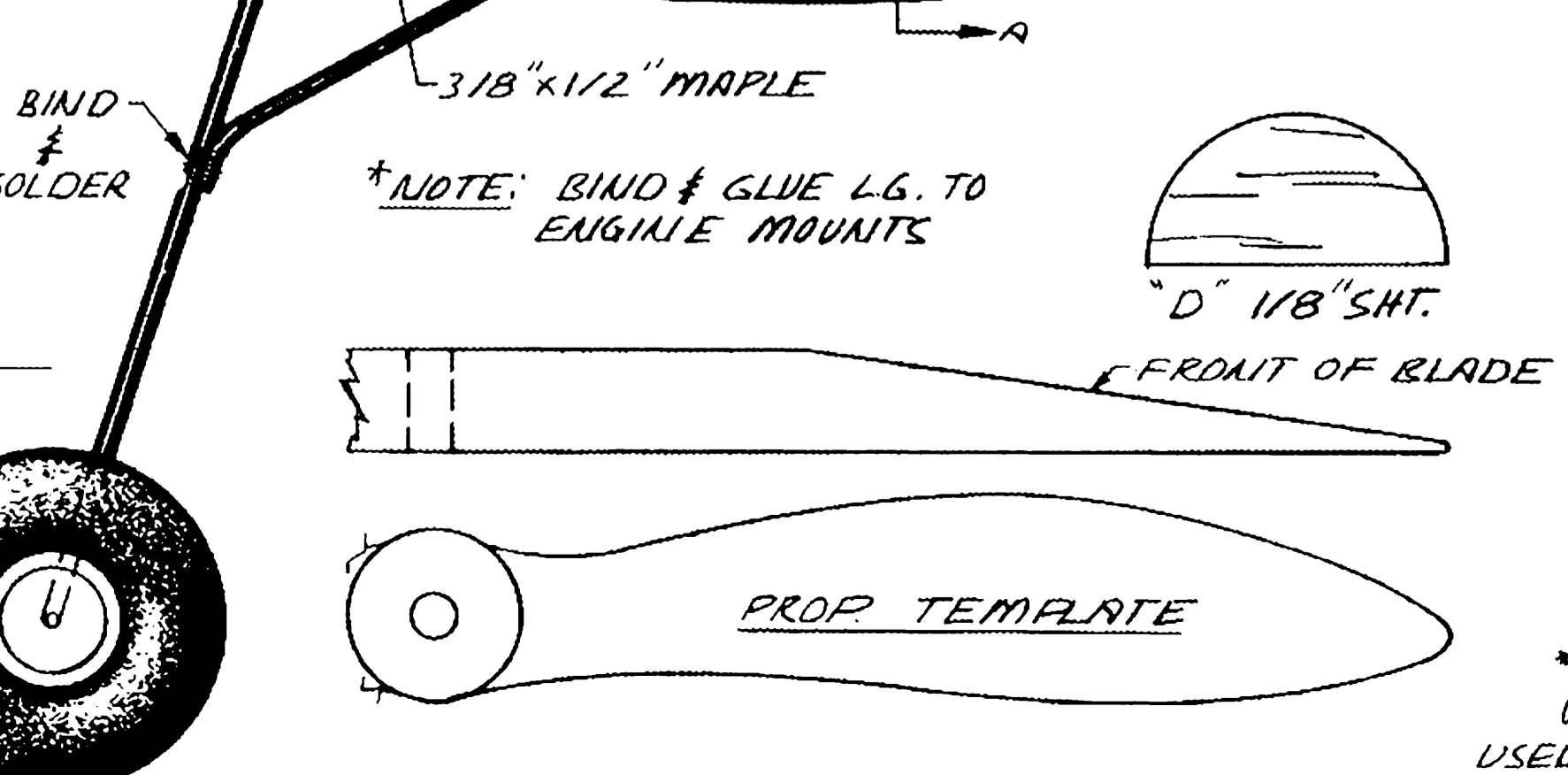
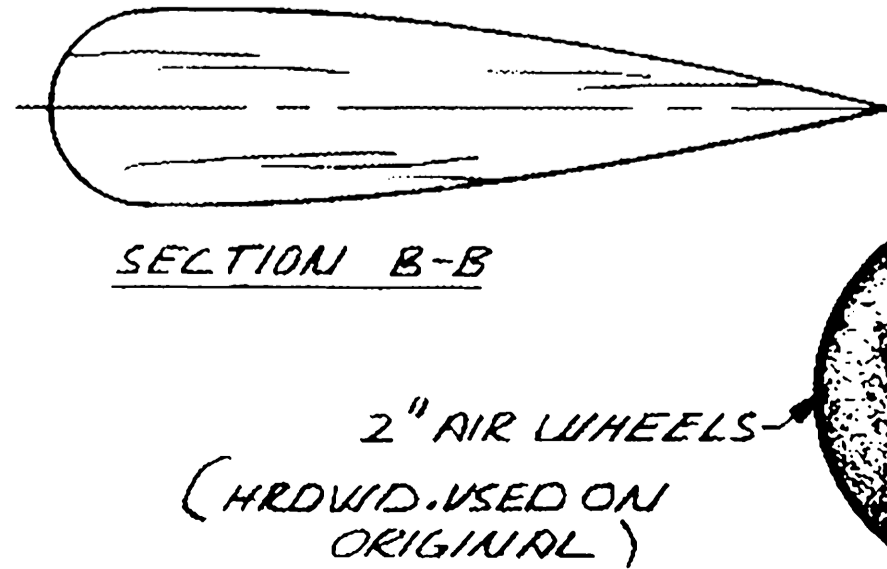
TANK IS MADE IN 3 PLS. TOP BOTTOM & SIDE. TUBE IS SOLDERED TO INTAKE

*BABY CYCLONE USED ON ORIGINAL



*NOTE: POD & PYLON ARE CARVED FROM BLOCK Balsa & HOLLOWED OUT.

*NOTE: ALL PARTS Balsa UNLESS OTHERWISE NOTED.



TOM LAURIE'S "ALL Balsa GAS MODEL"

DESIGNED BY: TOM LAURIE
 CIRCA 1939
 DRAWN FOR M. B. BY: S.A. PATTERSON

MODEL BUILDER magazine
 621 W. NINETEENTH ST. COSTA MESA, CA. 92627
 Plan No: 677-O.T.

