

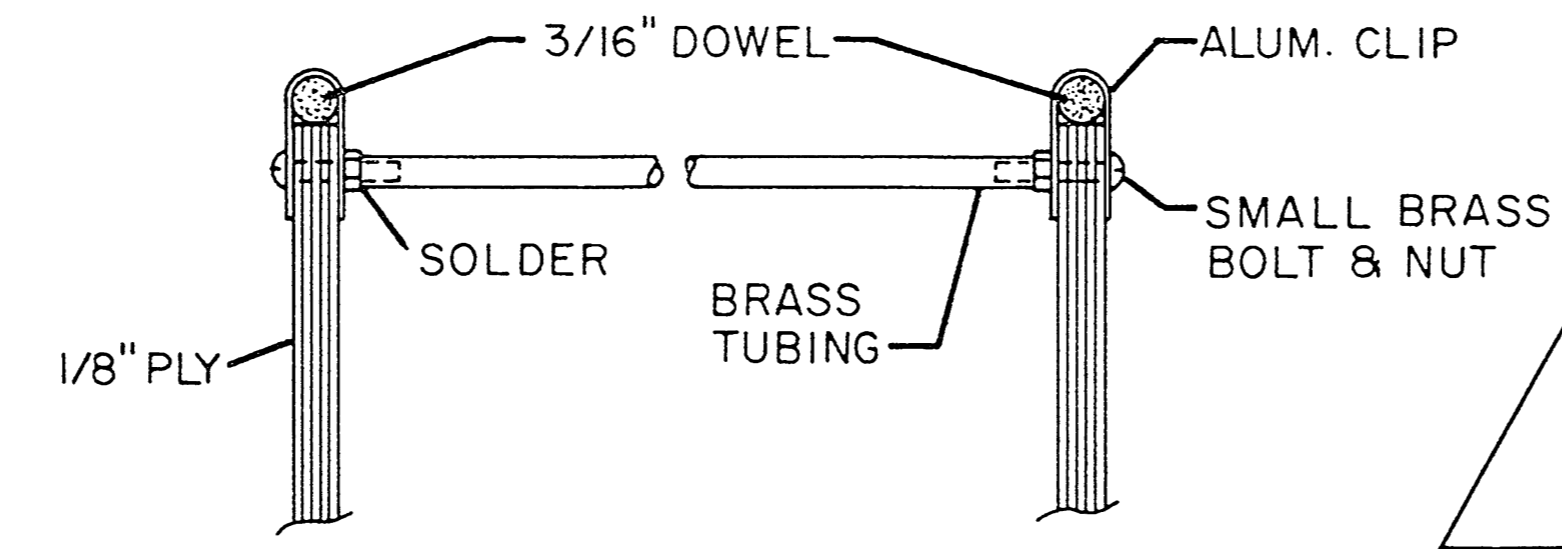
PAINING: FUSELAGE

LIQUITEX ACRYLIC ARTIST COLOR.
COMES IN TUBES IN VARIOUS COLORS.
DRY TO TOUCH IN ONE HOUR (WARM DRY PLACE)
FUEL PROOF IN 12 HOURS.
TWO COATS 50/50 CLEAR LIGHTLY SANDED AFTER EACH COAT.
ONE OR TWO COATS OF LIQUITEX (SLIGHTLY THINNED WITH WATER).

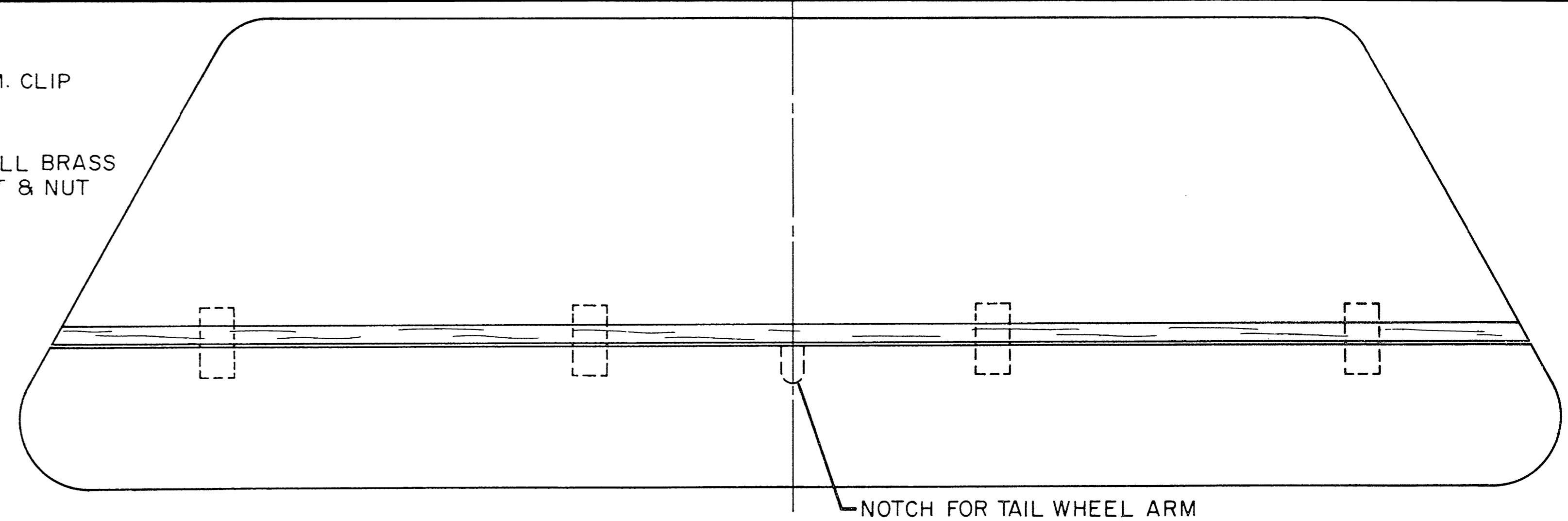
WINGS

LIGHTLY SANDED & ONE OR TWO COATS
OF LIQUITEX AS ABOVE.

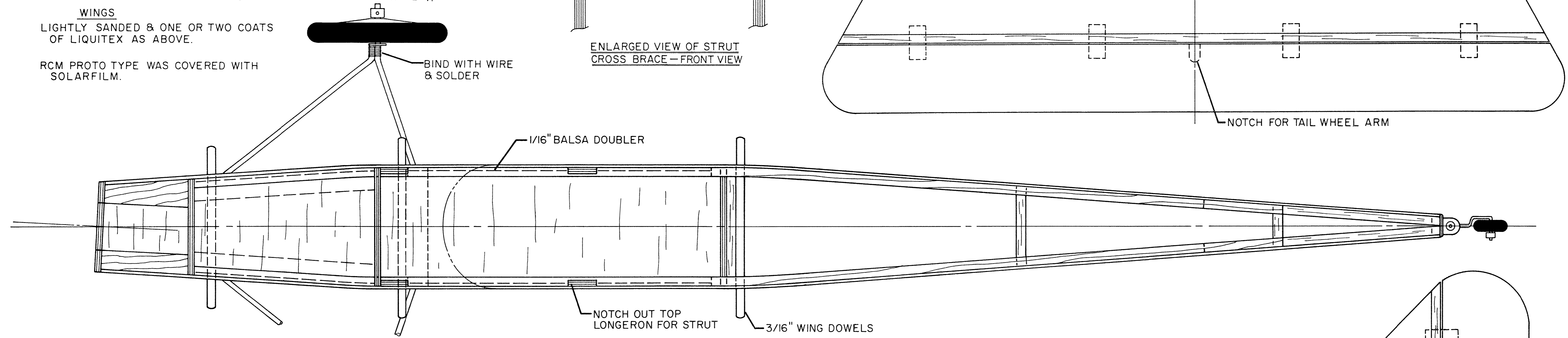
RCM PROTO TYPE WAS COVERED WITH
SOLARFILM.



ENLARGED VIEW OF STRUT
CROSS BRACE - FRONT VIEW



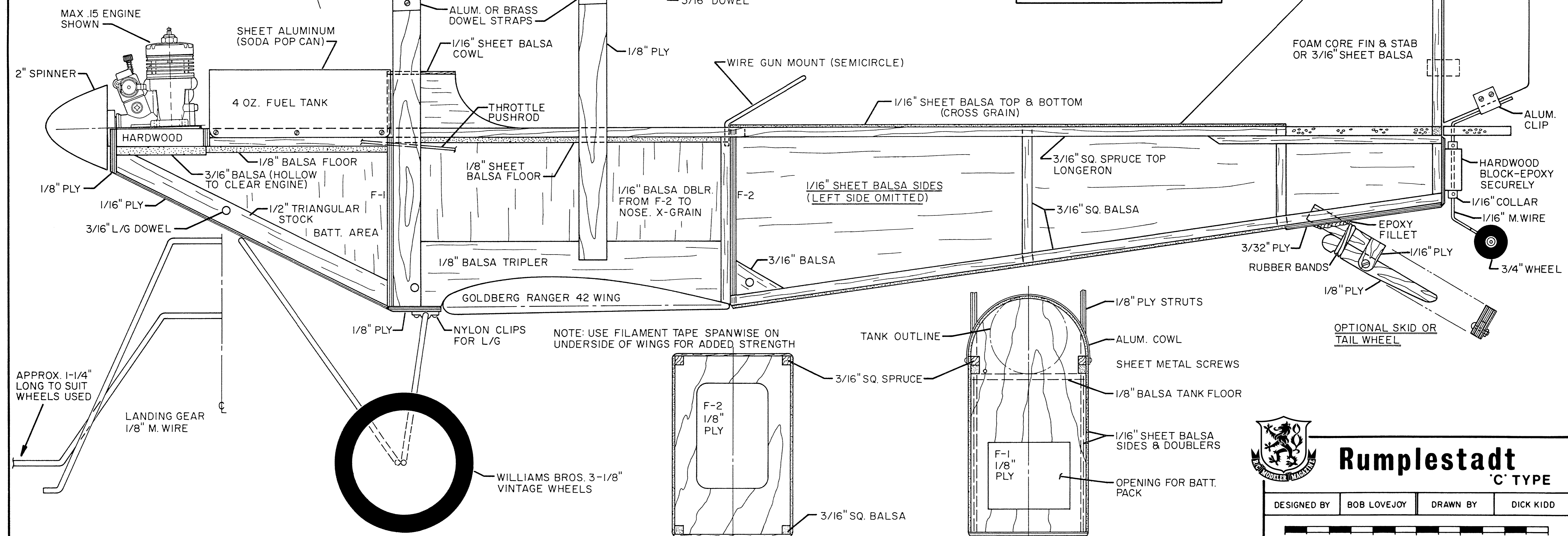
NOTCH FOR TAIL WHEEL ARM



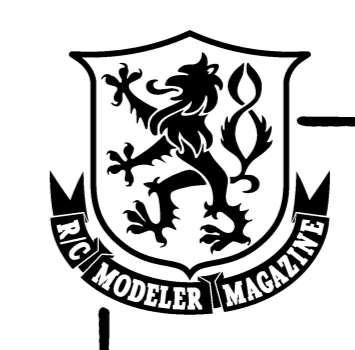
NOTCH OUT TOP
LONGERON FOR STRUT

WING SPAN — 42" (BOTH WINGS)
WING AREA — 480 SQ. IN. TOTAL
LENGTH — 33-1/2"
WEIGHT — 3 LBS. (APPROX.)
ENGINE SIZE — .10 TO .15 CU. IN.

ENGINE THRUST
1-1/2° DOWN
3° RIGHT



PLANS AVAILABLE ON PAGE 64



Rumplestadt
C TYPE

DESIGNED BY BOB LOVEJOY DRAWN BY DICK KIDD

