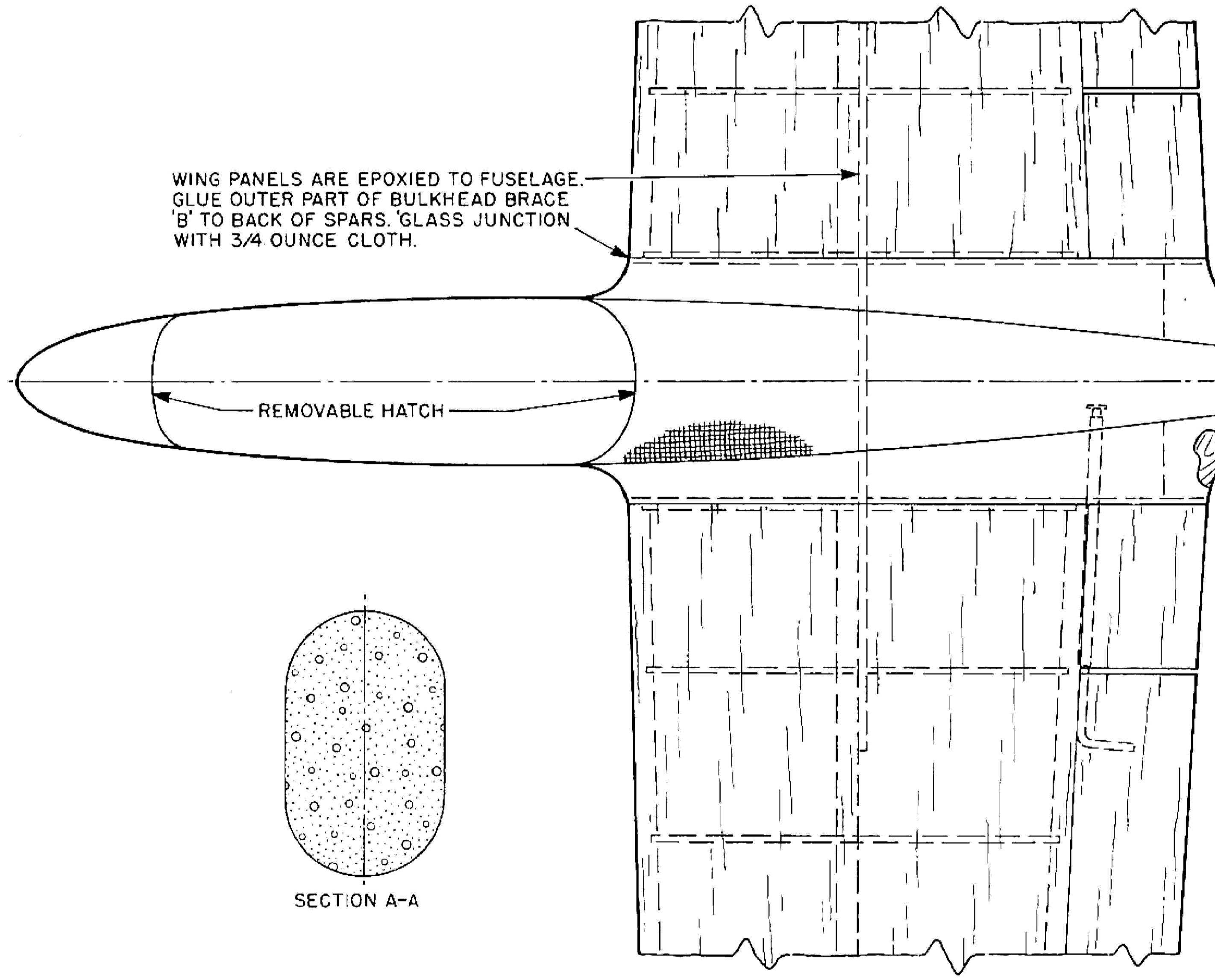


NOTE: WING PANELS ARE SHEETED WITH 1/16" LIGHT-WEIGHT Balsa. SHEETING DELETED ON WING PLANS TO CLARIFY INTERNAL DETAILS

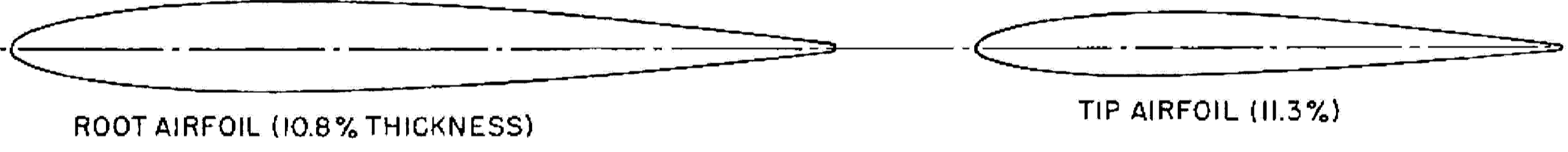
3/32" I.D. BRASS TUBE BEARING  
3/32" BRASS TORQUE ROD

NOTE: NO WASHOUT NECESSARY. NO WASHIN ALLOWABLE. MAKE LEADING EDGE BLUNTER TOWARD TIPS. 0.5° DIHEDRAL AT TIP.

AILERONS ARE CARVED FROM 3/8" Balsa SHEET



WHERE WING PANELS OVERLAP, LEFT PANEL IS SHOWN IN PHANTOM LINES (---).

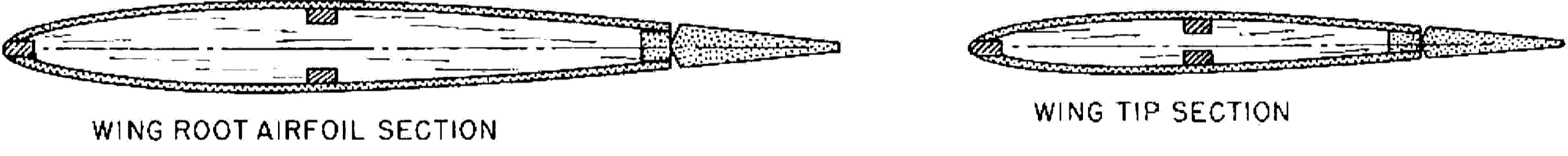


1/4" Balsa - SAND TO AIRFOIL SHAPE

1/16" MUSIC WIRE INSIDE 1/16" I.D. BRASS TUBING

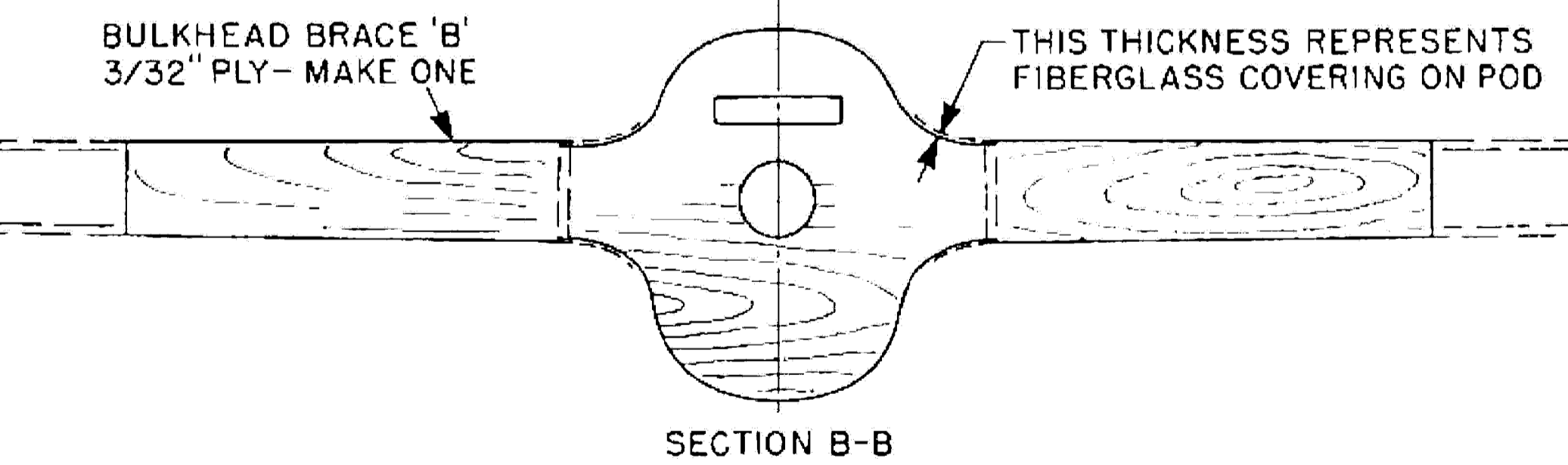
1/16" I.D. BRASS BEARINGS

1/16" PLY ROOT RIB FOR STABILATOR



WING ROOT AIRFOIL SECTION

WING TIP SECTION

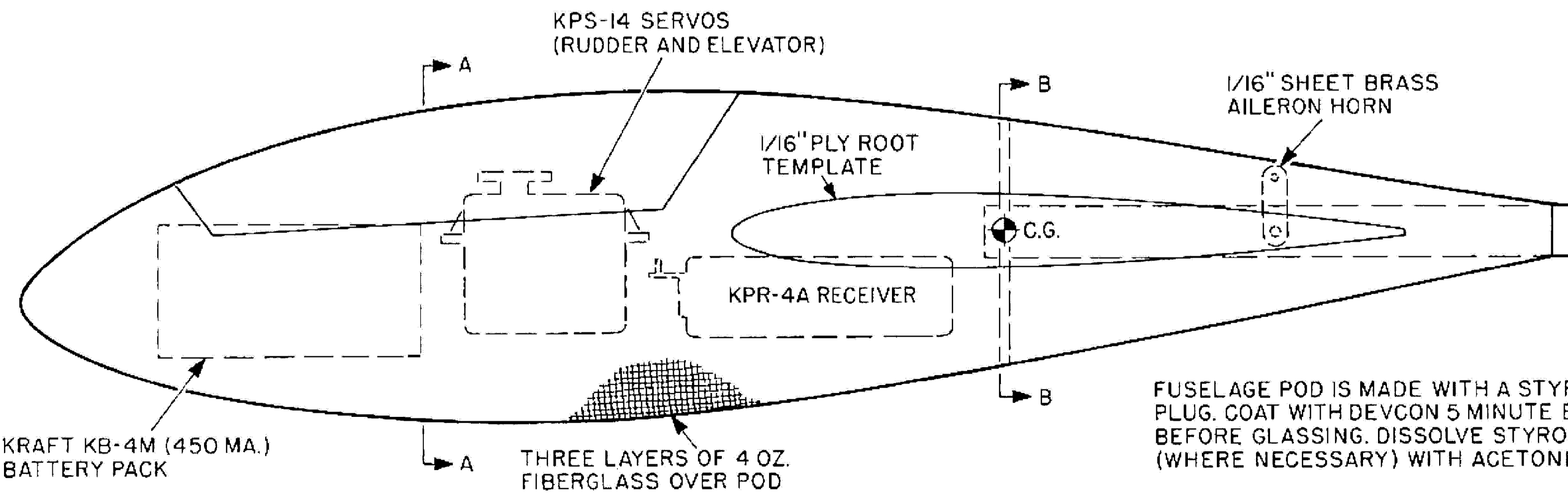


SECTION B-B

1/16" Balsa SHEETING - BOTH SIDES  
CUT L.E. FROM 1/8" SHEET Balsa

ELEVATOR HORN - CUT FROM 1/16" FIBERGLASS BOARD

HINGE LINE - FOR OPTIONAL RUDDER



KPS-14 SERVOS (RUDDER AND ELEVATOR)

1/16" PLY ROOT TEMPLATE

KPR-4A RECEIVER

KRAFT KB-4M (450 MA.) BATTERY PACK

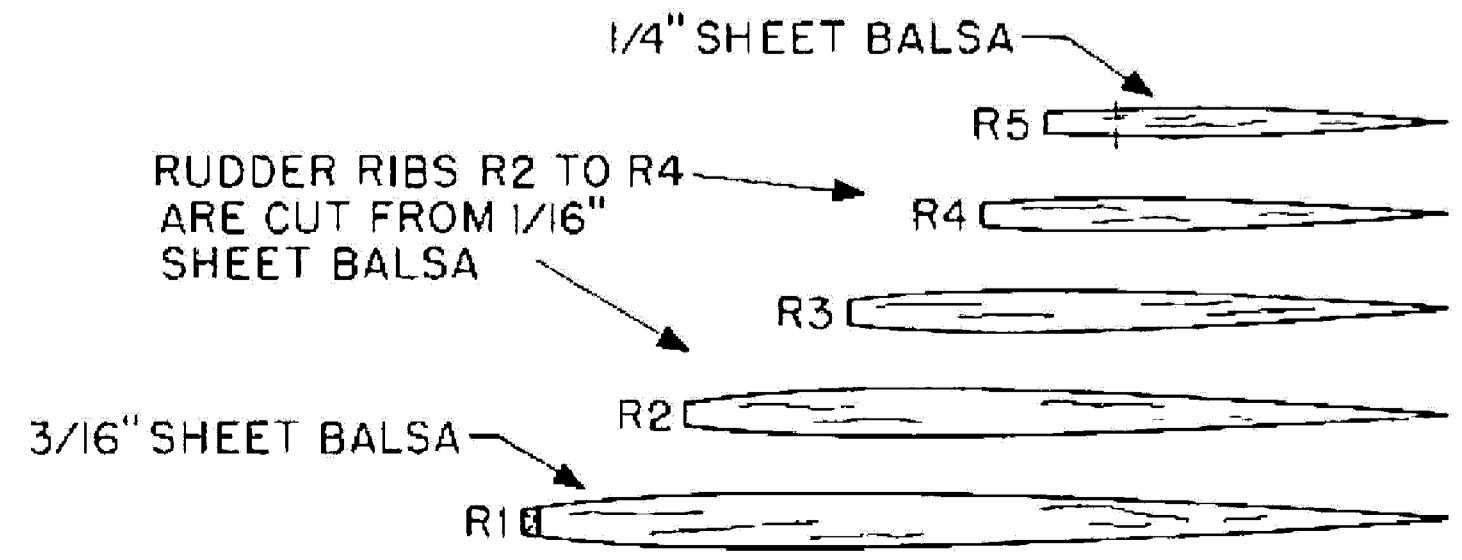
THREE LAYERS OF 4 OZ. FIBERGLASS OVER POD

FUSELAGE POD IS MADE WITH A STYROFOAM PLUG. COAT WITH DEVCON 5 MINUTE EPOXY BEFORE GLASSING. DISSOLVE STYROFOAM (WHERE NECESSARY) WITH ACETONE.

FIBERGLASS BOOM (SEE TEXT)

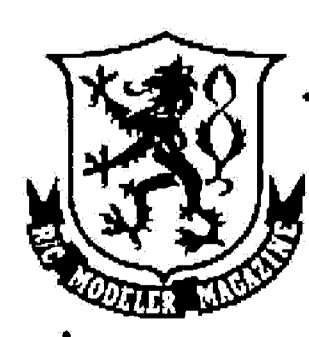
1/8" DOWEL PUSH ROD

SOLDER CLEVIS TO PUSH ROD



RUDDER RIBS R2 TO R4 ARE CUT FROM 1/16" SHEET Balsa

3/16" SHEET Balsa



© RCM. ALL COMMERCIAL RIGHTS RESERVED.

**PURANAS**

DRAWN BY MARK GUMPRECHT INKED BY PAUL PLECAN

