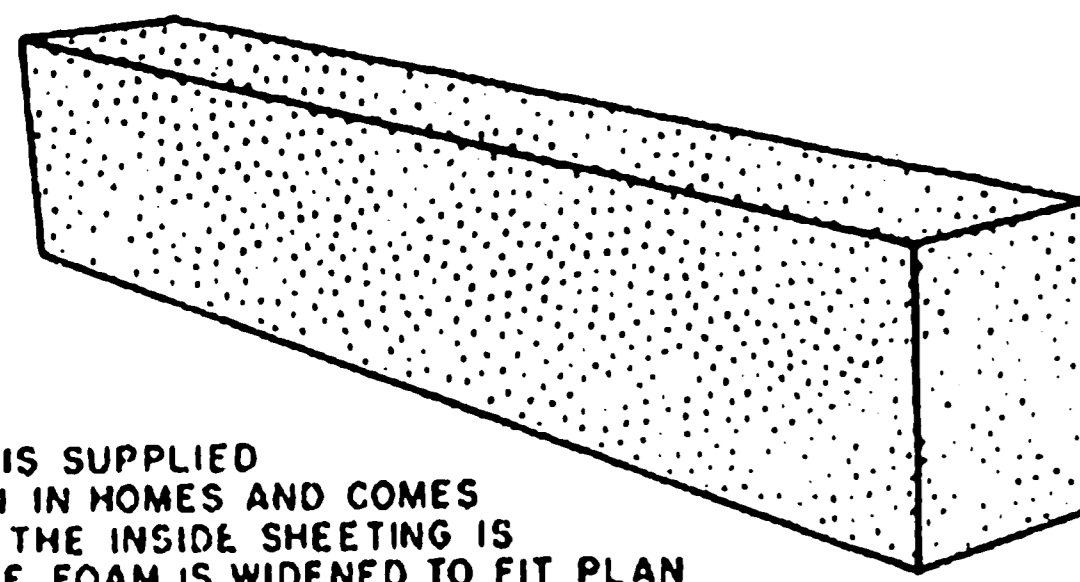
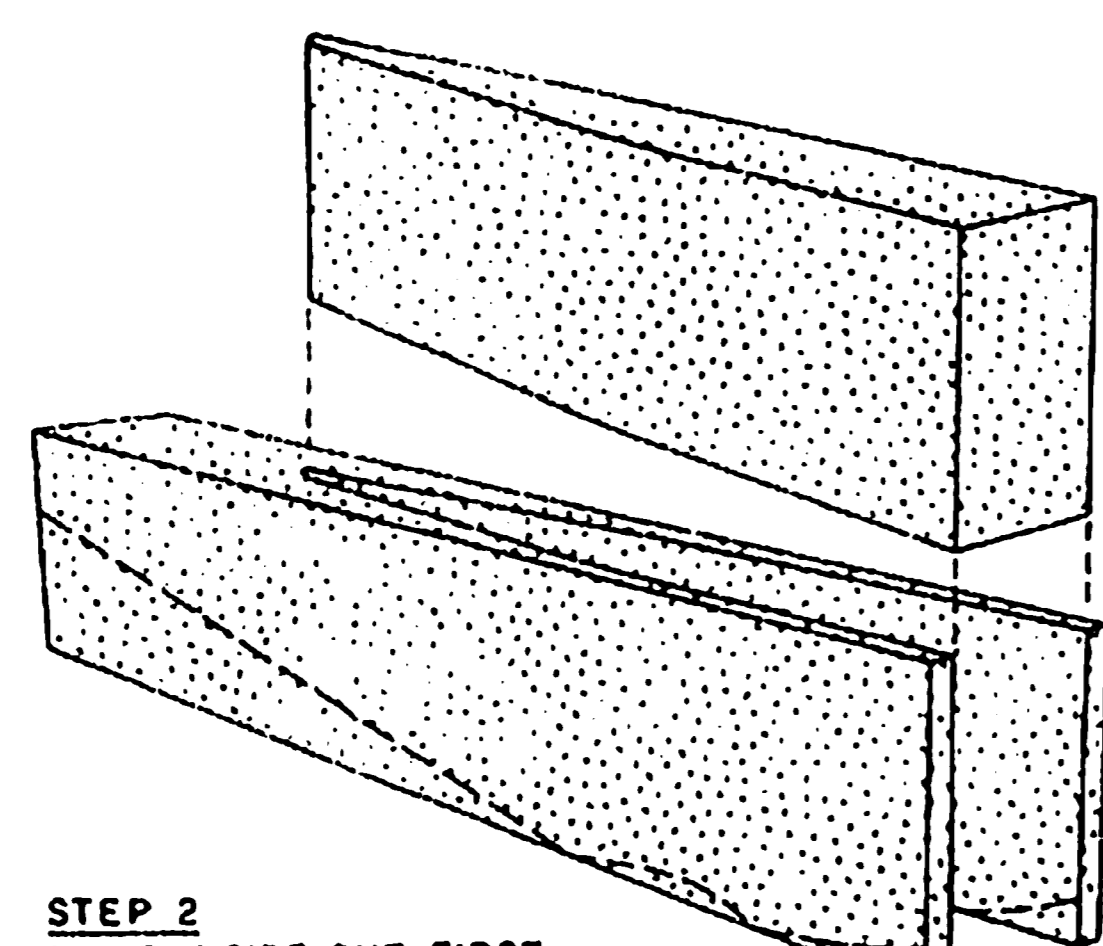


**FUSELAGE**

**STEP 1**  
CUT A FOAM BLOCK FROM MASTER STOCK  
28" LONG, 6" DEEP AND 4" WIDE

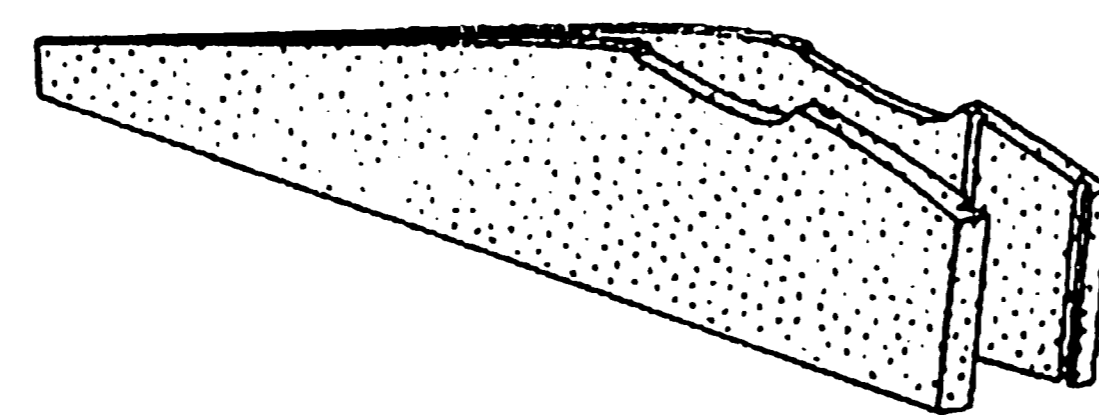


STYRA FOAM IS SUPPLIED FOR INSULATION IN HOMES AND COMES 4" WIDE. AFTER THE INSUL SHEETING IS COMPLETED THE FOAM IS WIDENED TO FIT PLAN



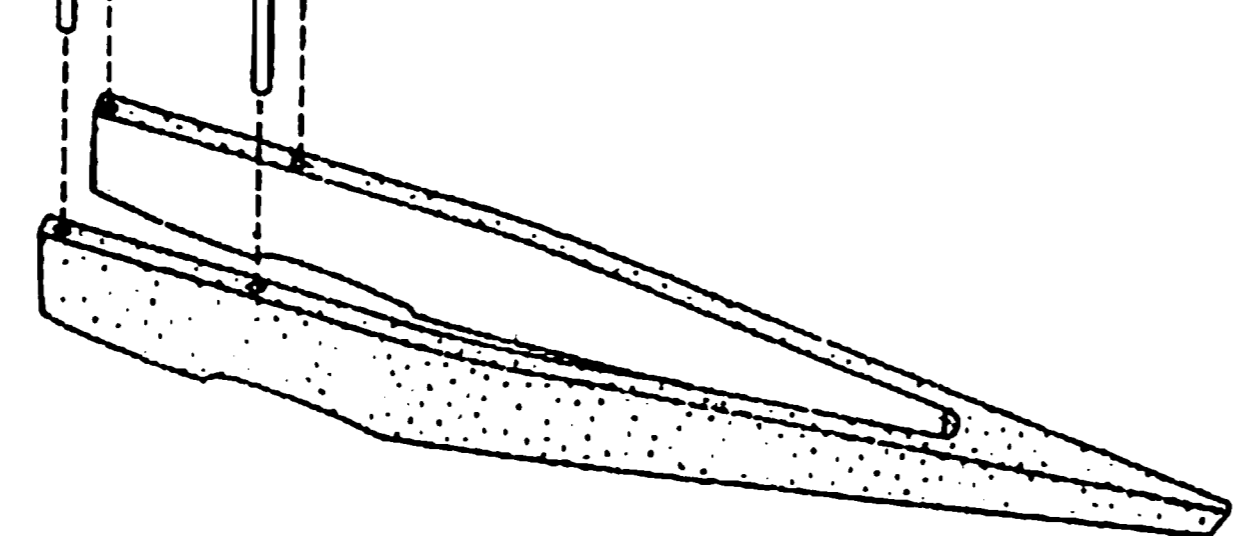
**STEP 2**  
MAKE INSIDE CUT FIRST AND LEAVE INSIDE IN PLACE FOR SIDE CUT. PLACE SIDE PATTERN ON AND CUT BOTTOM ROUND CUT.

**STEP 3**  
PLACE BOTTOM ROUND CUT BACK IN PLACE AND MAKE TOP CUTS. THIS COMPLETES THE FOAM CORE OF YOUR FUSELAGE.

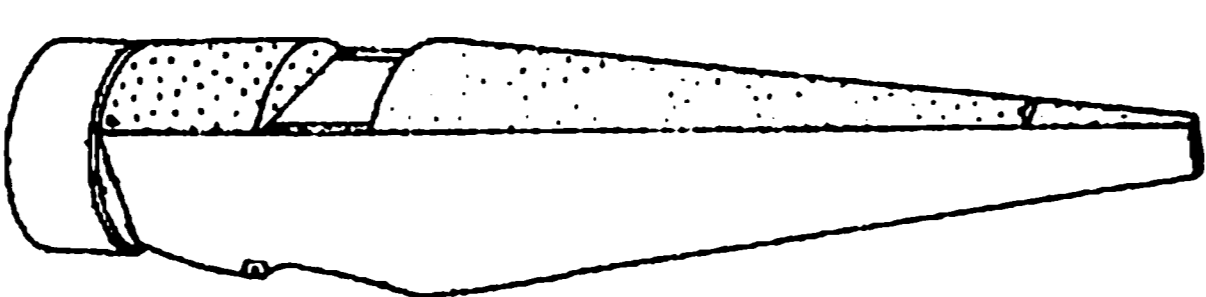


FIBERGLASS TUBES 1/4" O.D. (SOMETIMES USED FOR PUSHRODS)

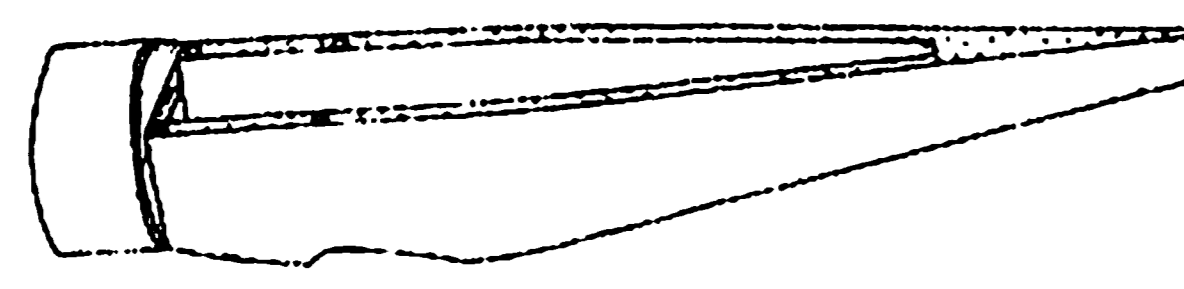
**STEP 4**  
CUT 4 LENGTHS OF FIBERGLASS PUSHRODS AND EPOXY IN GROOVES AND USING 3M CONTACT GLUE SHEET THE INSIDE WITH 1/32" Balsa.



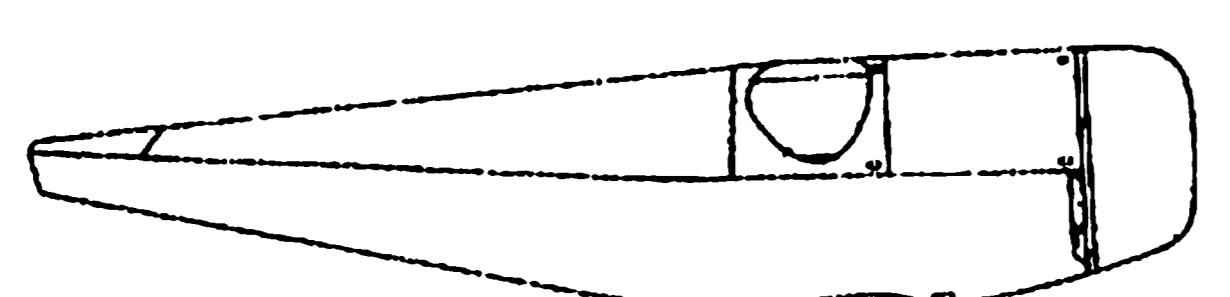
**STEP 6**  
USING PATTERN F-1 CUT FOAM FOR TOP FRONT AND TOP BACK (F1 & F2) FASTEN WITH CONTACT CEMENT.



**STEP 5**  
SHEET SIDES WITH 1/32" Balsa AND EPOXY FIREWALL AND NOSEBLOCK IN PLACE. (SIDES ARE WIDENED 1/2" AT THIS POINT)



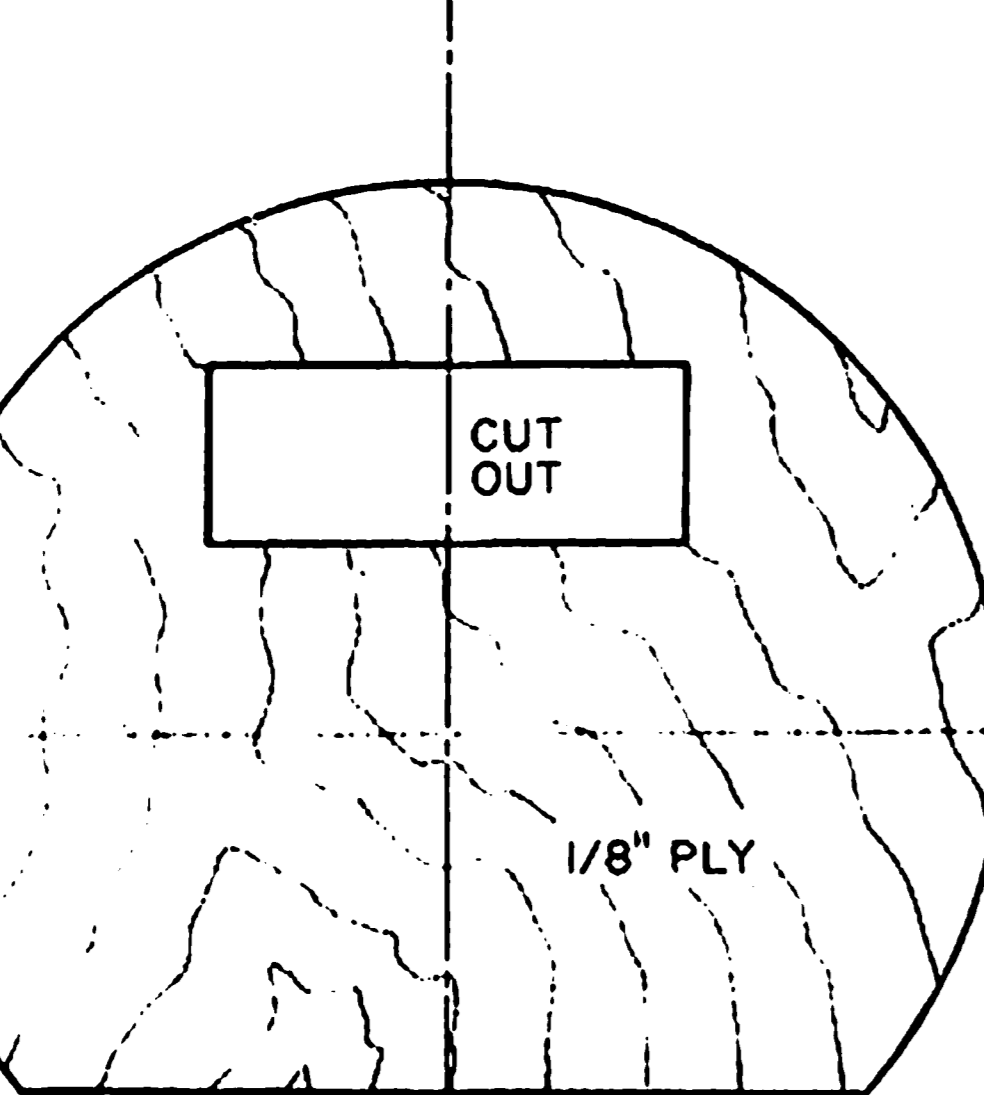
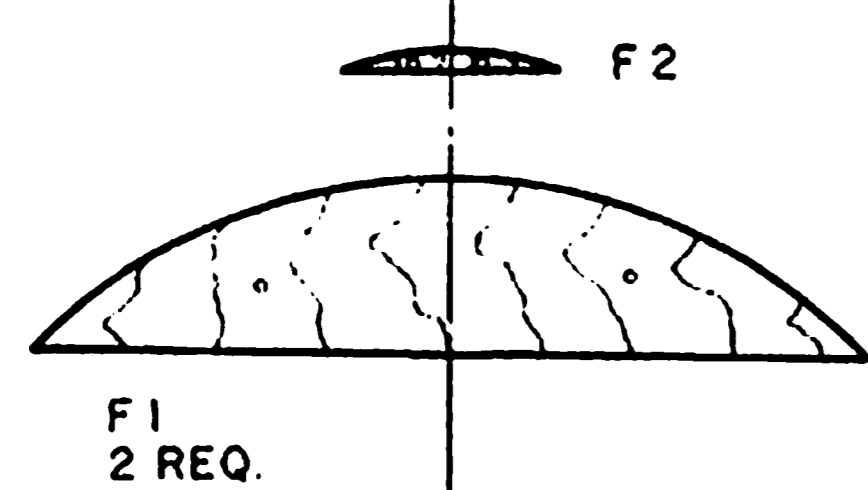
**STEP 7**  
USING 1/32" Balsa SHEET EXPOSED FOAM FIRST LEAVING 1/8" EXPOSED TO FIT COCKPIT FARING AND NOSEBLOCK TO SHAPE.



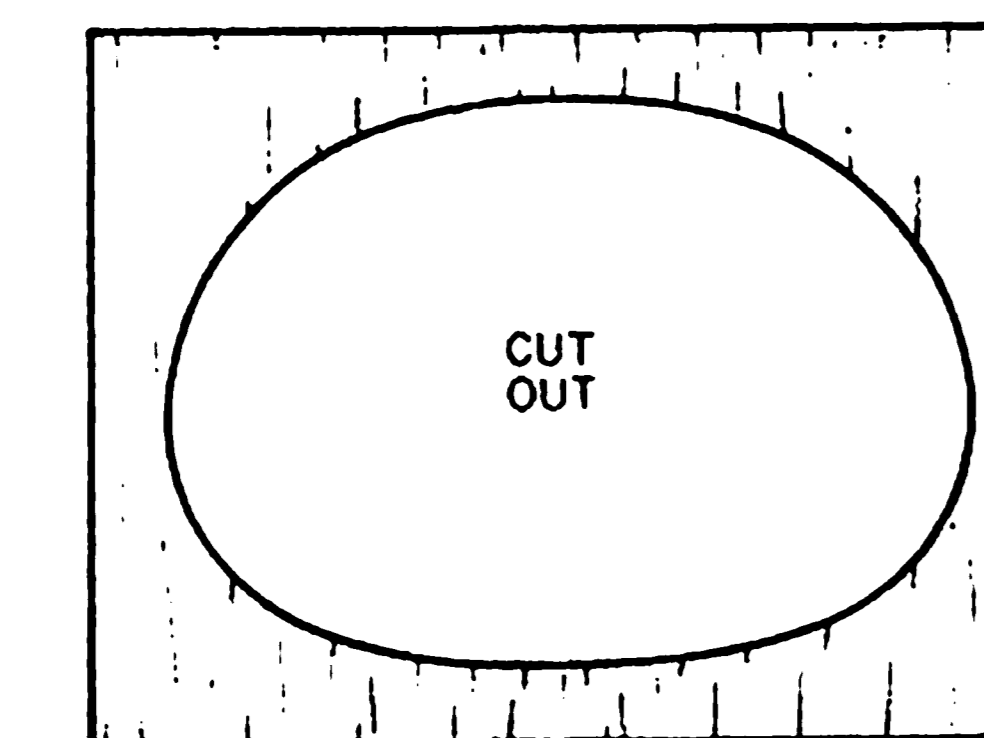
MASONITE (HARD BOARD)

1/8" MASONITE SIDE PATTERN 2 REQ

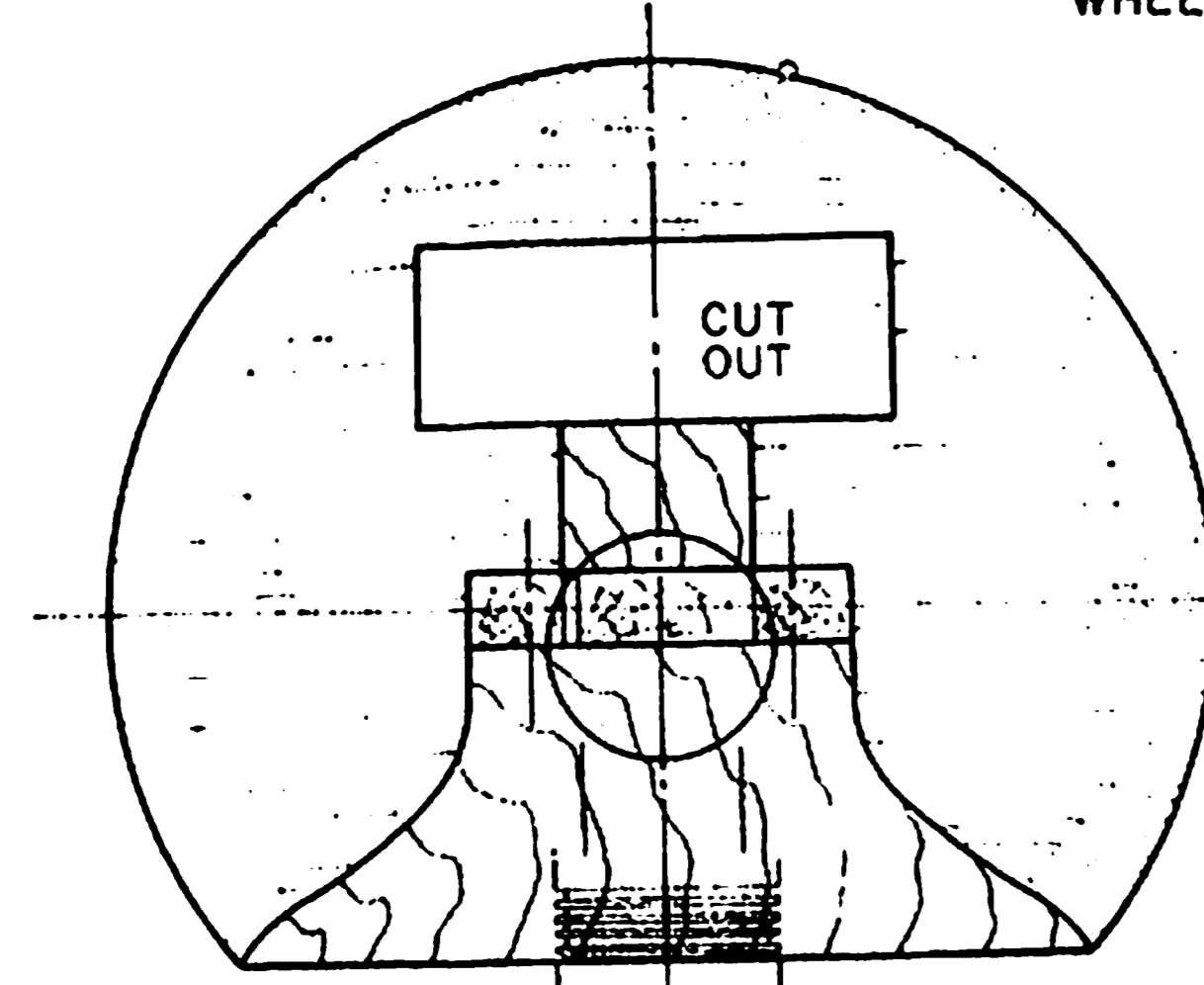
1/8" MASONITE TOP PATTERN 2 REQ



REAR L.G. MOUNT HARDWOOD



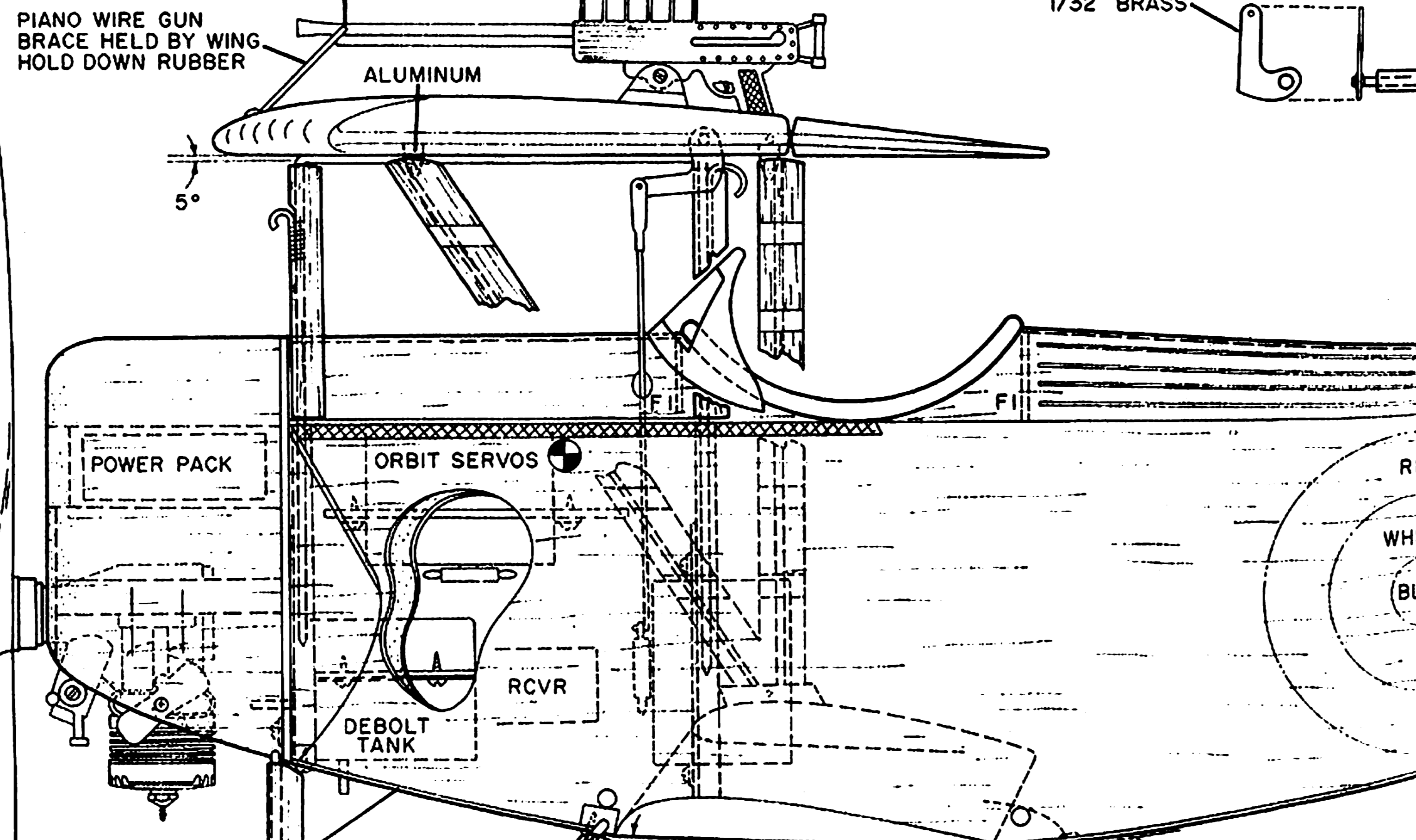
COCKPIT PATTERN 1/32" HARD Balsa



1/8" MASONITE INSIDE PATTERN 2 REQ

WINDSHIELD (STOVE VENT PIPE ALUMINUM)

HARDWOOD MOTOR MOUNT



1/32" PLY THIS PANEL IS REMOVABLE WITH 4 WOOD SCREWS

WILLIAM BROS 4-1/2" VINTAGE WHEELS

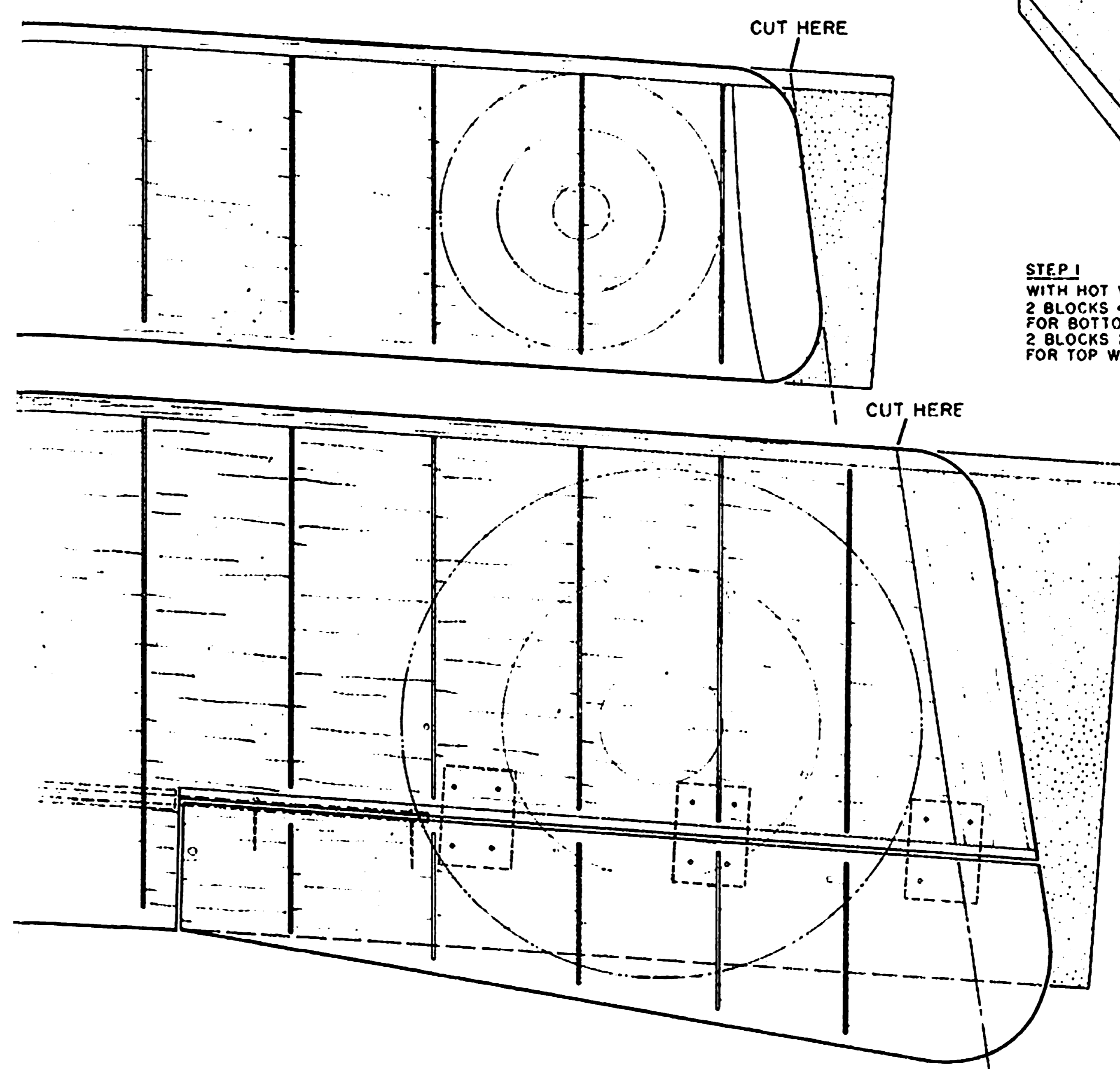
WHEEL SHAFT 12-3/4" LONG

0" RING

ALUMINUM GUN MOUNT

ELEVATOR  
MOTOR  
RUDDER

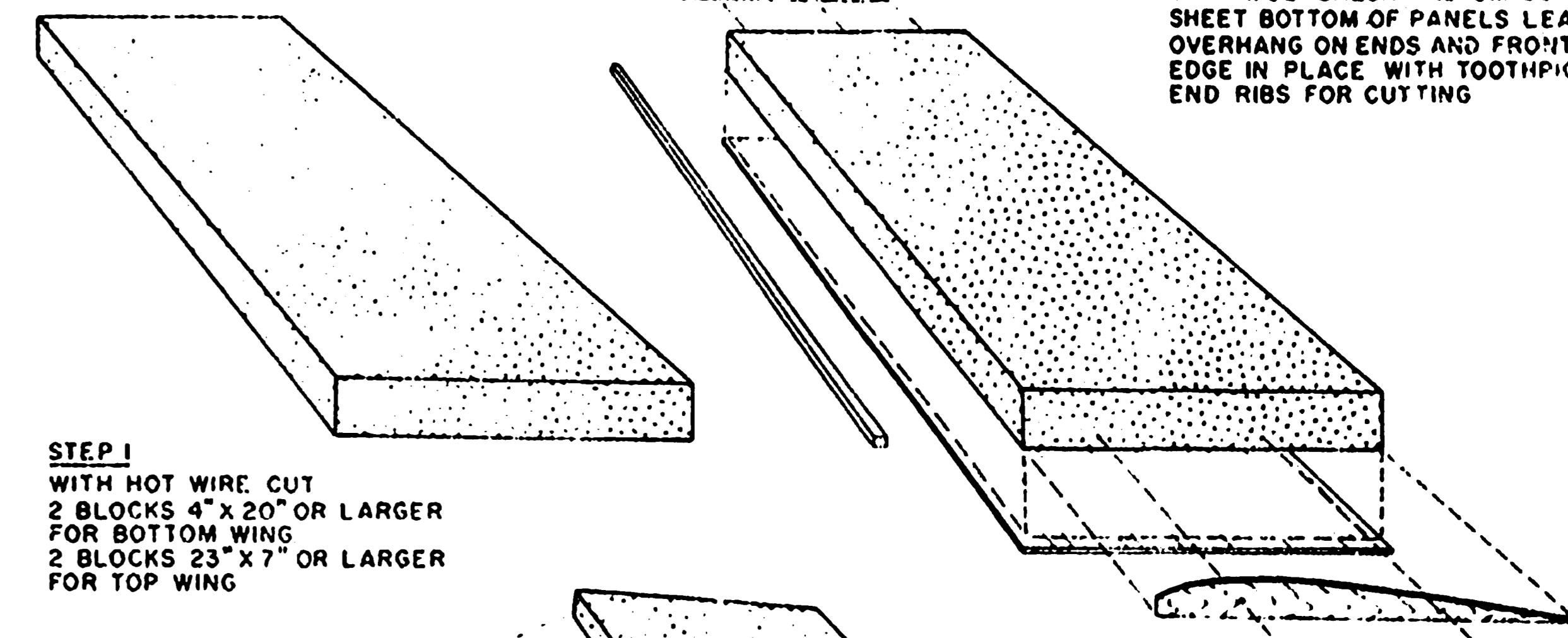
**NOTE**  
CUT WING OUTLINE FROM PLAN AND LAY OVER FOAM PANELS FOR FINAL CUTS. REVERSE FOR LEFT PANEL



CUT HERE

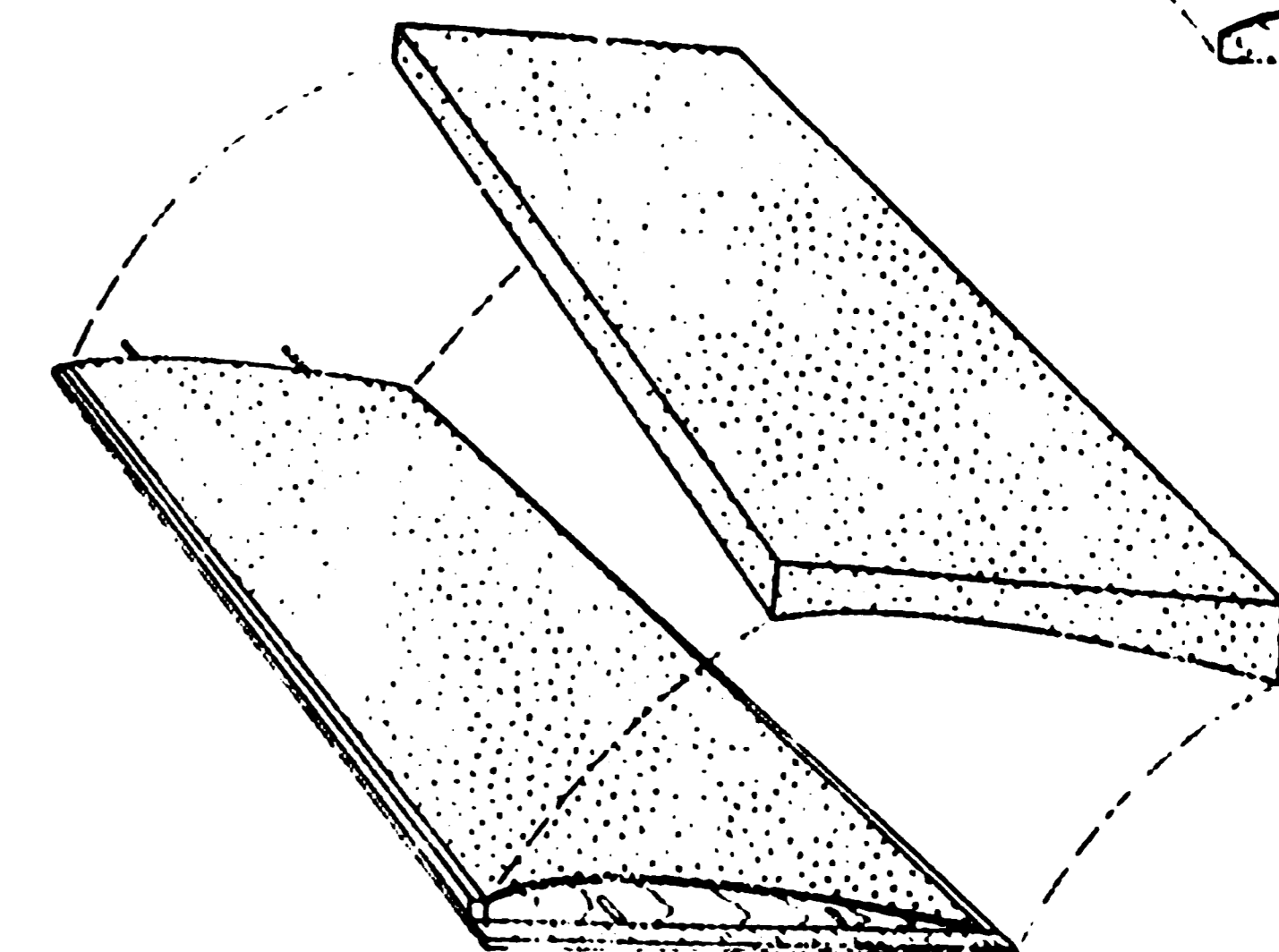
CUT HERE

**STEP 1**  
WITH HOT WIRE CUT 2 BLOCKS 4" X 20" OR LARGER FOR BOTTOM WING 2 BLOCKS 23" X 7" OR LARGER FOR TOP WING



**WINGS**

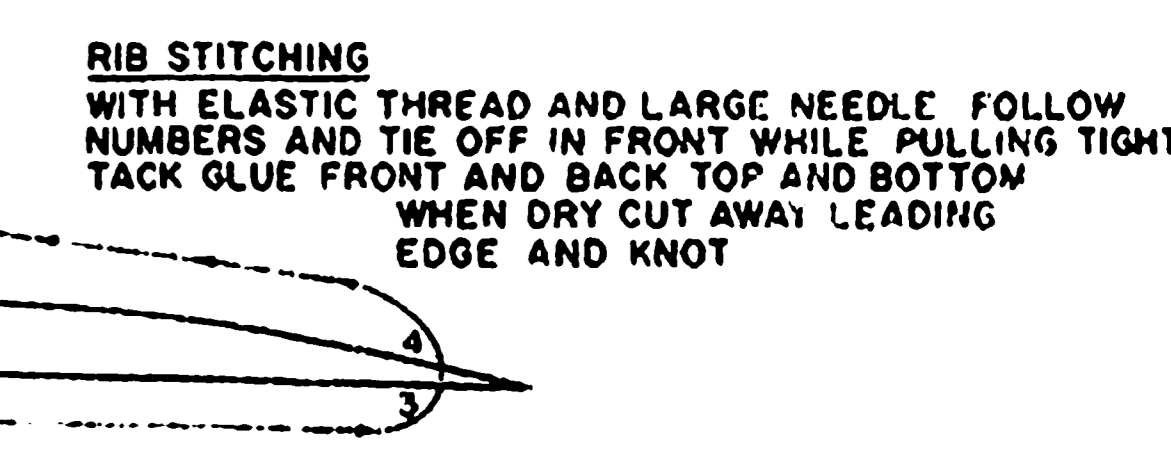
**STEP 2**  
WITH 1/32" Balsa AND 3M CONTACT CEMENT SHEET BOTTOM OF PANELS LEAVING 1/4" OVERHANG ON ENDS AND FRONT. GLUE LEADING EDGE IN PLACE WITH TOOTHPICKS LOCATE END RIBS FOR CUTTING



**STEP 3**  
START CUT FROM TRAILING EDGE AND FINISH AT LEADING EDGE JOIN BOTH HALVES TOGETHER AND ADD 1° DIHEDRAL TO BOTTOM WING SHEET TOP & BOTTOM WING

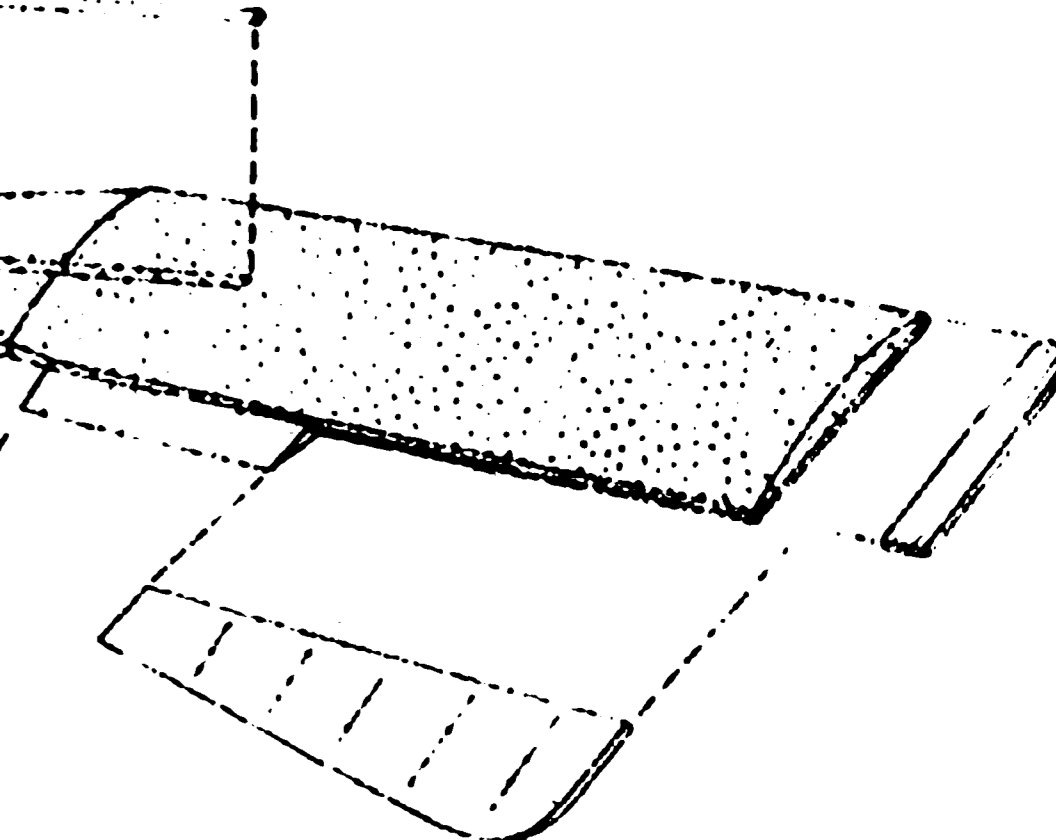
FINISHED BOTTOM WING

ELASTIC THREAD



BOTTOM WING 2 REQ.

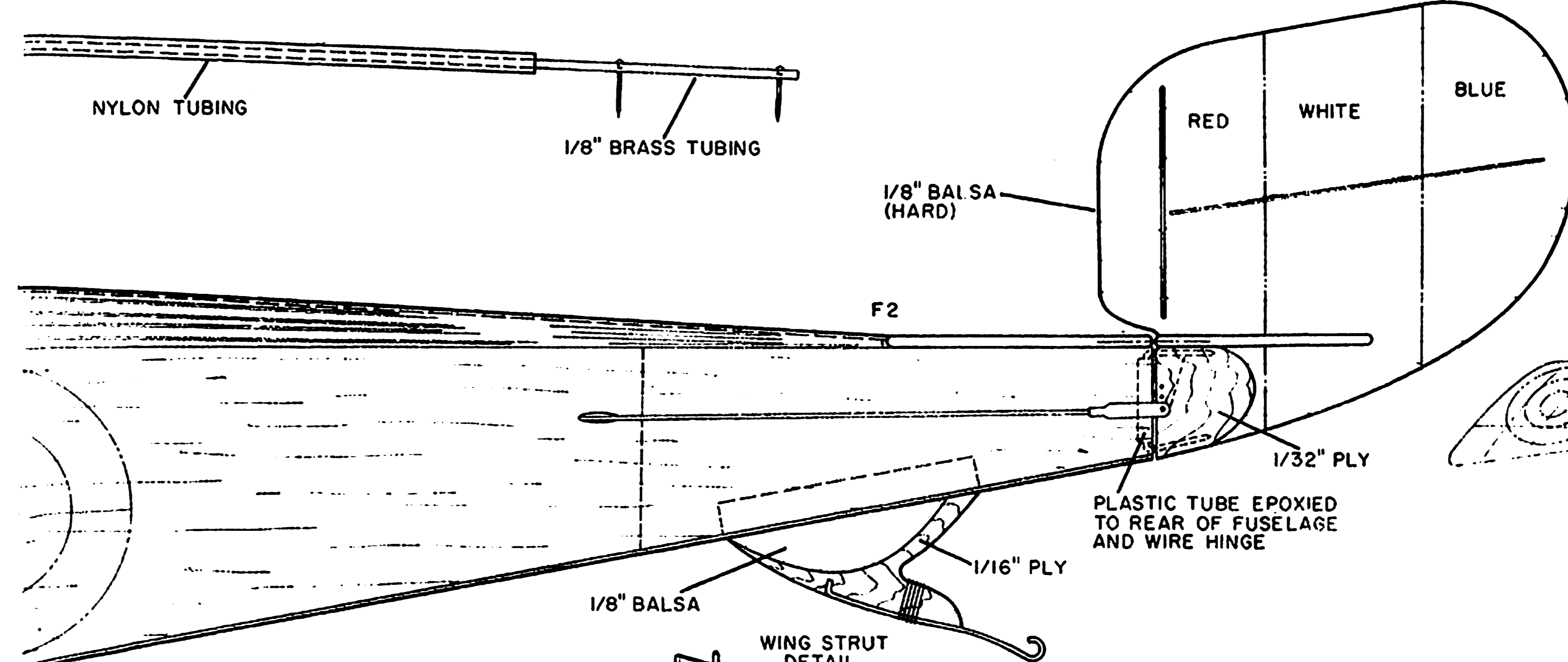
TOP WING 2 REQ.



REAR WING STRUT ACTUAL

BEND DOWN HERE

FRONT WING STRUT ACTUAL



NYLON TUBING

1/8" BRASS TUBING

1/8" Balsa (HARD)

F2

1/32" PLY

PLASTIC TUBE EPOXIED TO REAR OF FUSELAGE AND WIRE HINGE

1/16" PLY

1/8" Balsa

EPOXY

WING STRUT DETAIL

2

FRONT L.G. LENGTH

REAR L.G. LENGTH

WING STRUT VENEER EPOXIED UND 1/16" PIANO WIRE

ALUMINUM

WING AREA - 424 SQ IN  
POWER - .15 TO .19  
WEIGHT - (1.19) 3 LBS. 9 OZ



**NIEUPORT 11**

DESIGNED & DRAWN BY BRYCE PETERSON INKED BY GERARDO FLORES

By H.E.

