

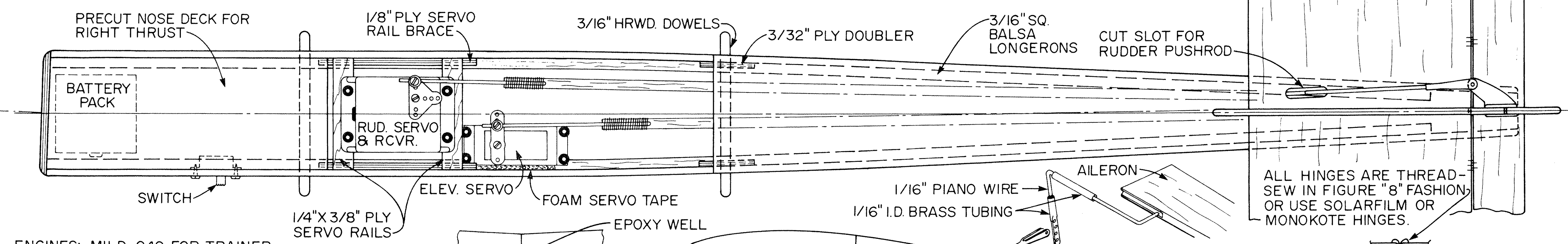
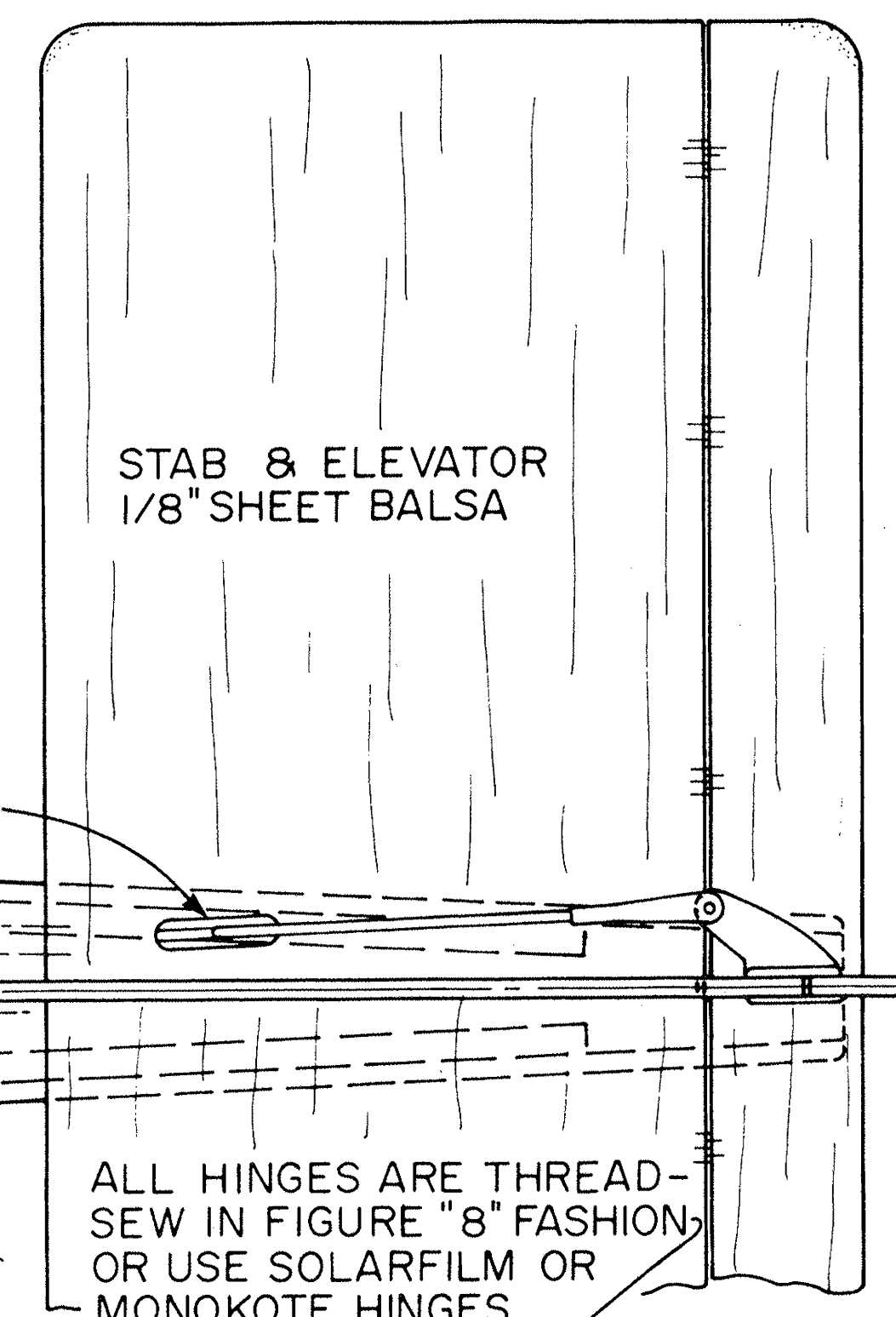
WING LAYOUT

WING CONSTRUCTION -

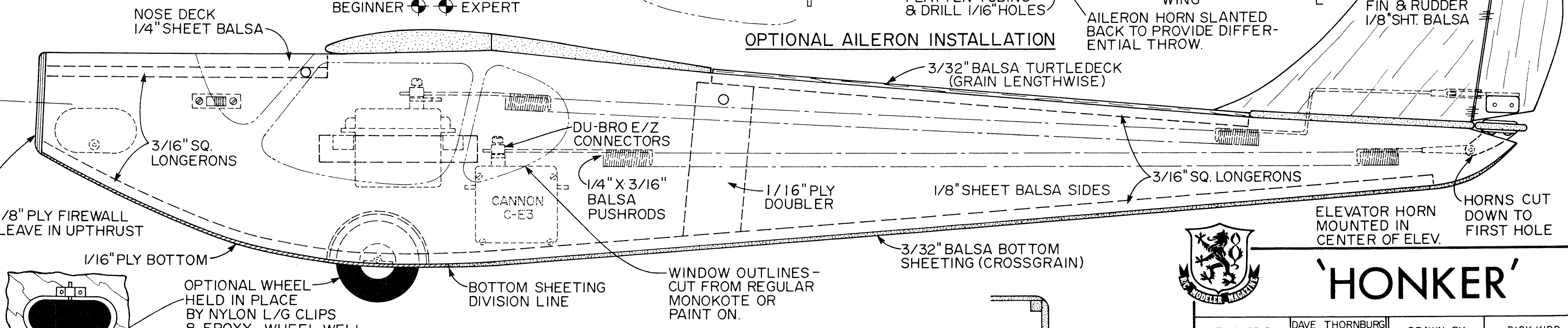
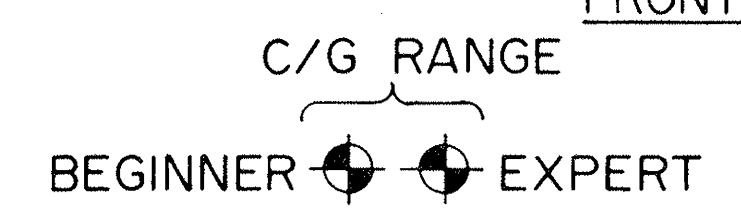
DIHEDRAL: 2" PER PANEL FOR RUDDER FLYING
REDUCE TO 1-1/8" FOR AILERON OPERATION

1. SAND TO AIRFOIL SECTION.
2. CUT WING ALONG CENTER SECTION LINE.
3. BEVEL ROOTS FOR DESIRED DIHEDRAL WITH SANDING BLOCK.
4. JOIN WINGS WITH EPOXY GLUE (5 MINUTE IS ADEQUATE).
5. WRAPPING DIHEDRAL JOINT WITH CELASTIC OR FIBERGLASS CLOTH & EPOXY GLUE OPTIONAL, BUT NOT NECESSARY.
6. FOR AILERONS CUT 7/8" X 16-1/2" PER PANEL. USE SAME HINGES AS TAIL. HINGE EVERY 3".

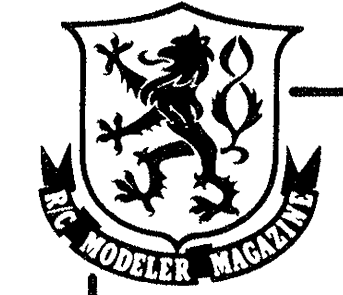
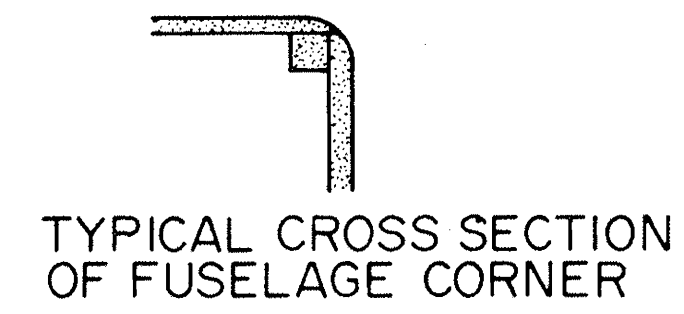
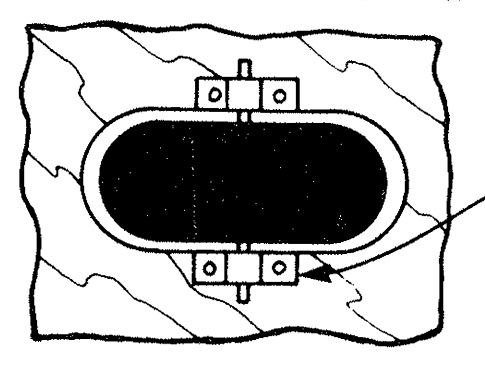
HONKER WEIGHTS:
16 - 22 OZ. (SOLARFILMED AIRFRAME = 9 OZ.)
WING SPAN = 36"
WING AREA = 252 SQ. IN.
LENGTH = 27-1/2" (PLUS ENGINE)



ENGINES: MILD .049 FOR TRAINER
TEE DEE .049 FOR SPORT
.09 W/THROTTLE FOR HOT
3 CHANNEL FLYING



OPTIONAL AILERON INSTALLATION



'HONKER'

DESIGNED BY DAVE THORNBURG & DON DEWEY
DRAWN BY DICK KIDD

