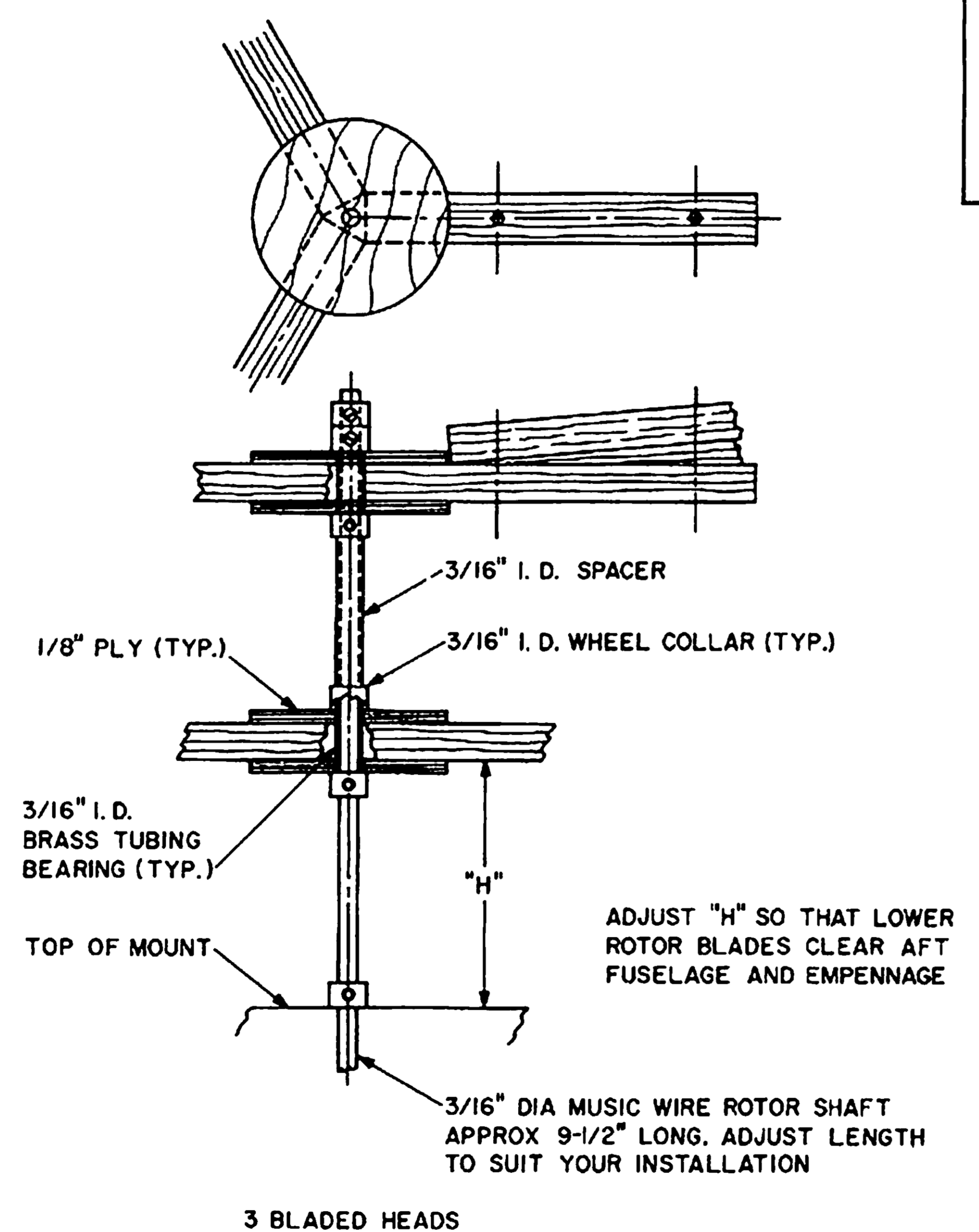
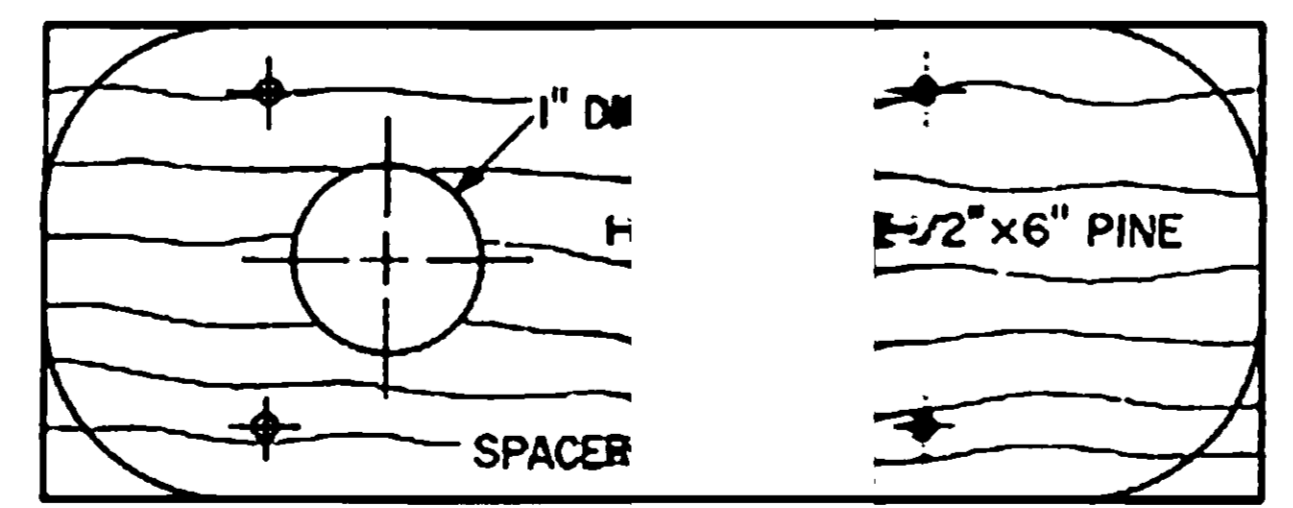
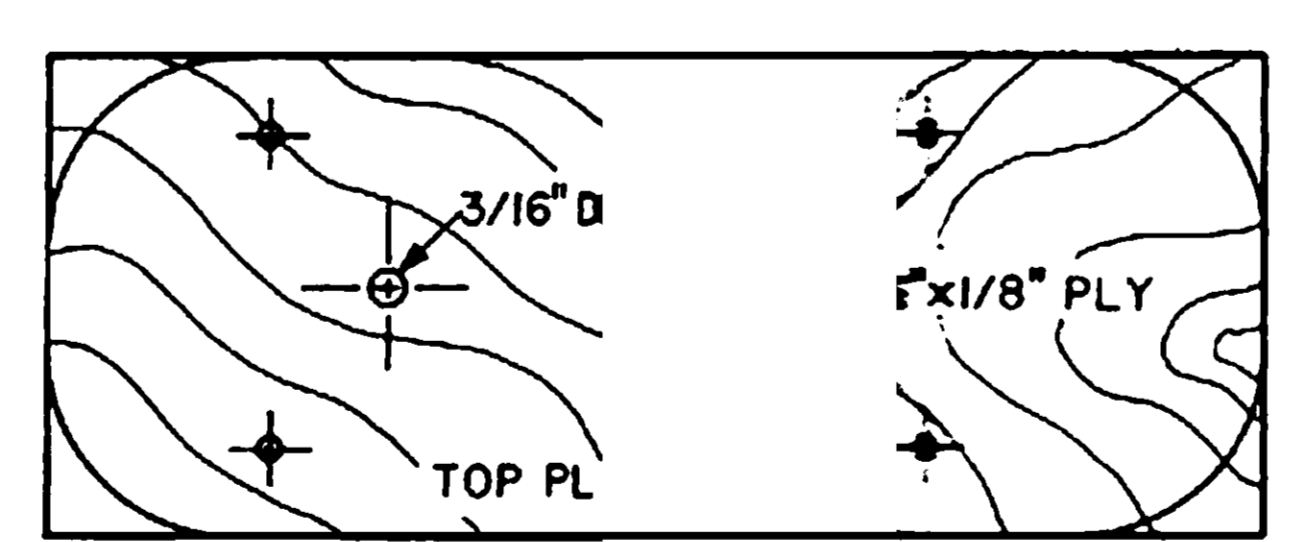
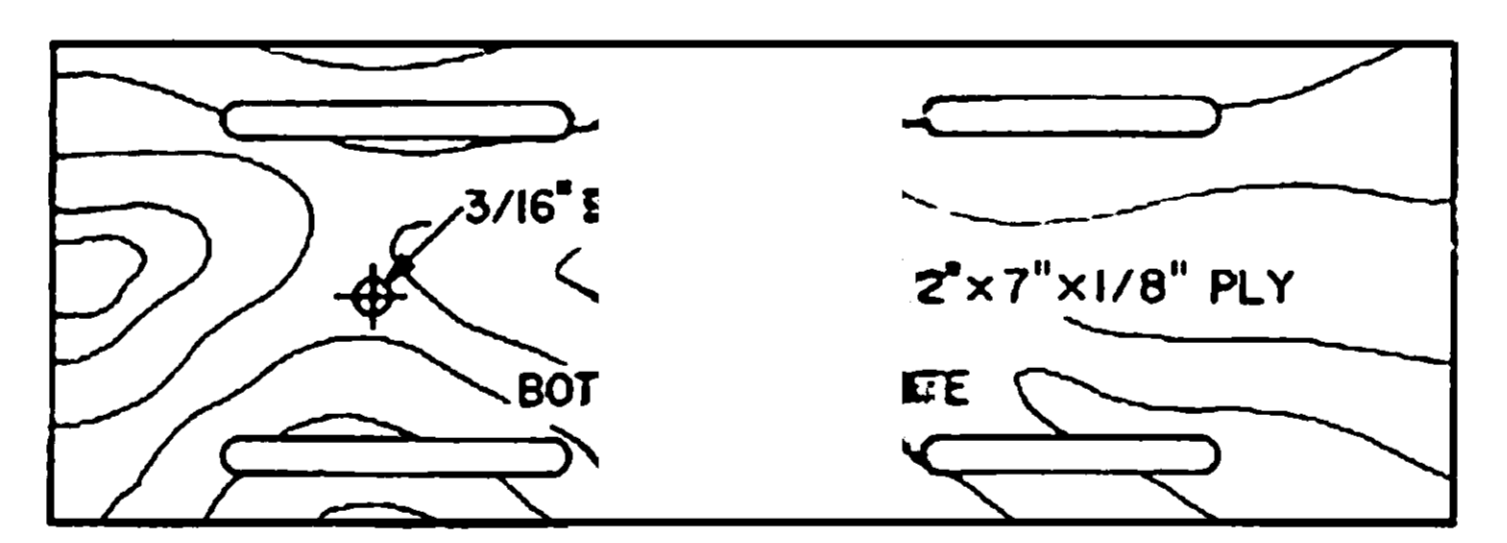
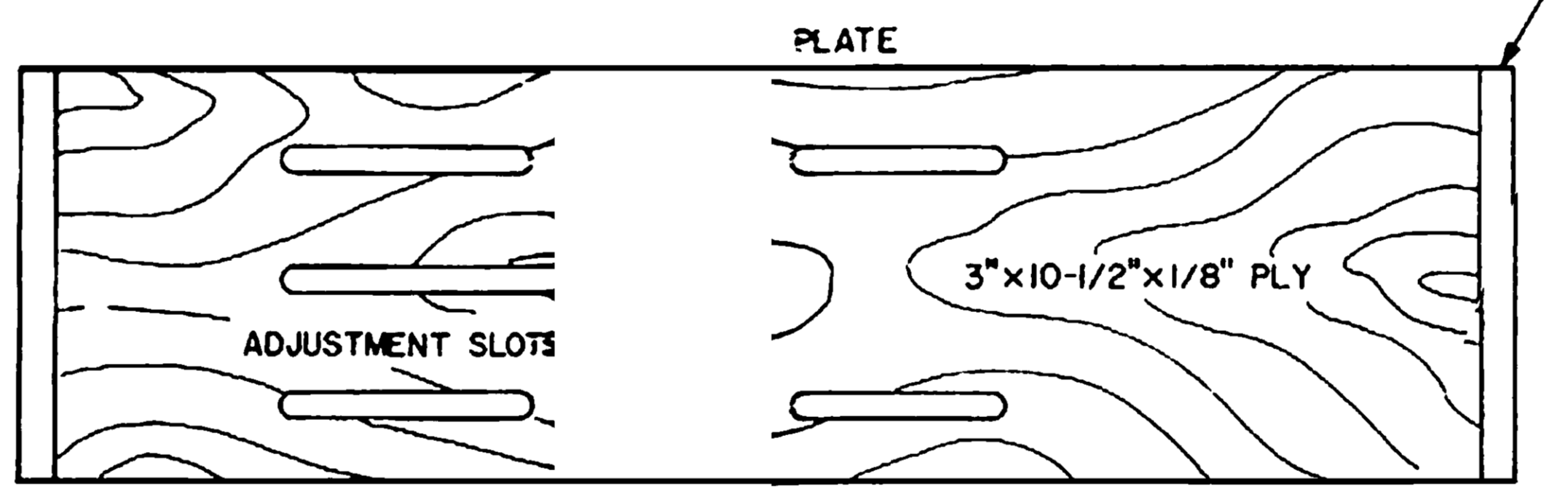
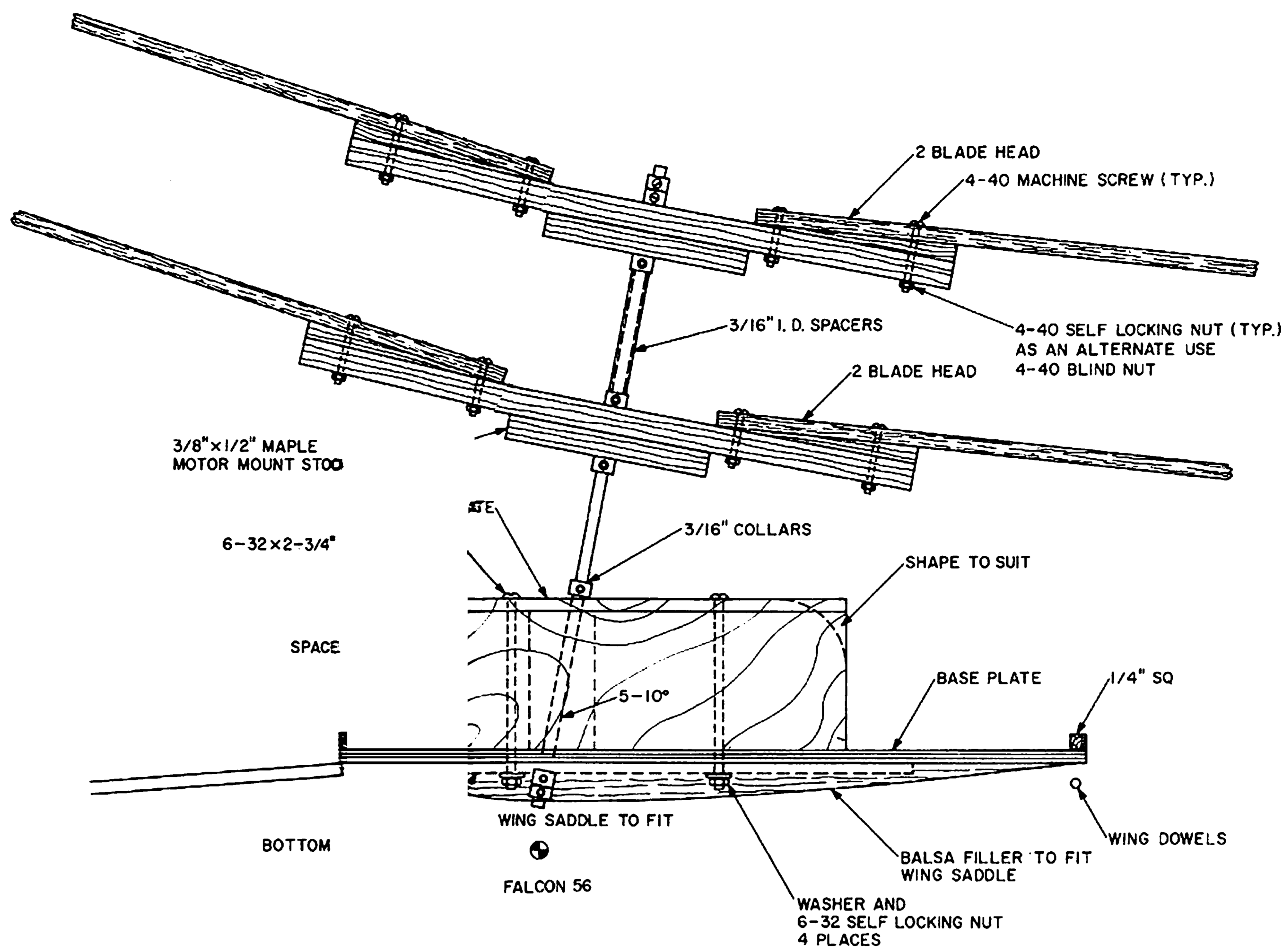


ADJUST "H" SO THAT LOWER ROTOR BLADES CLEAR AFT FUSELAGE AND EMPENNAGE

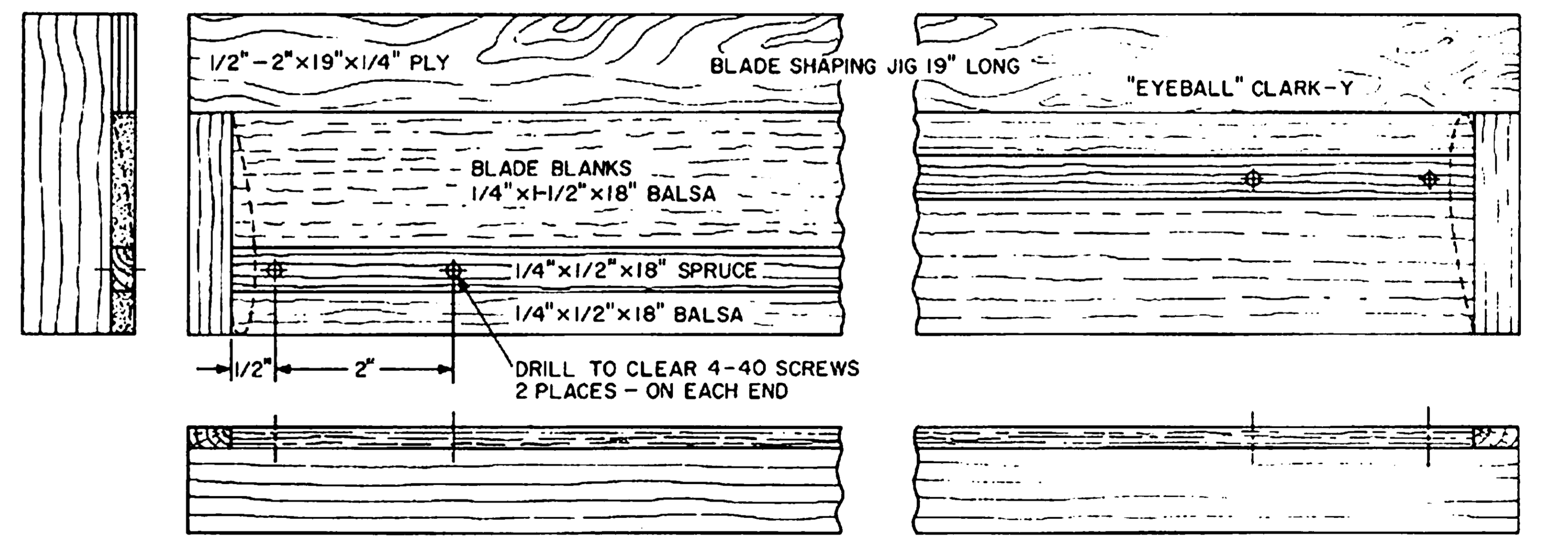
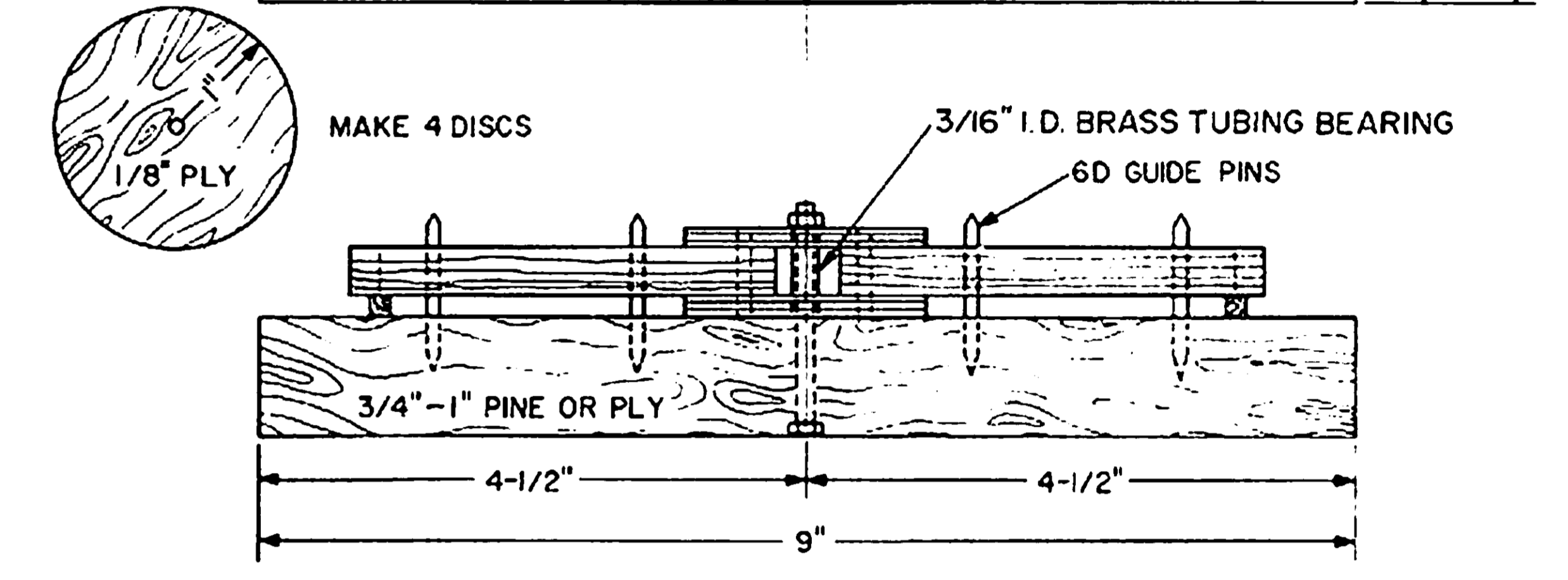
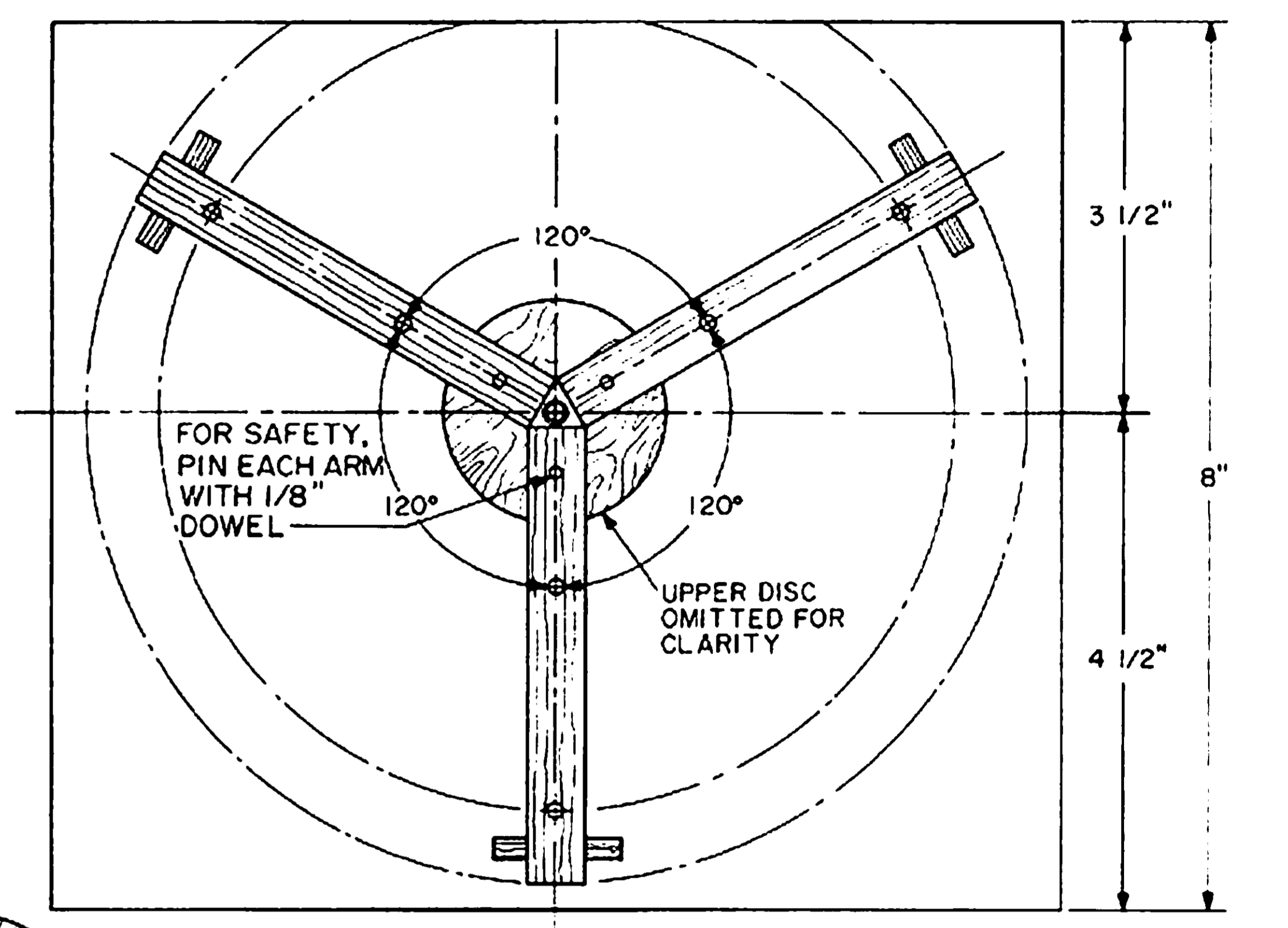
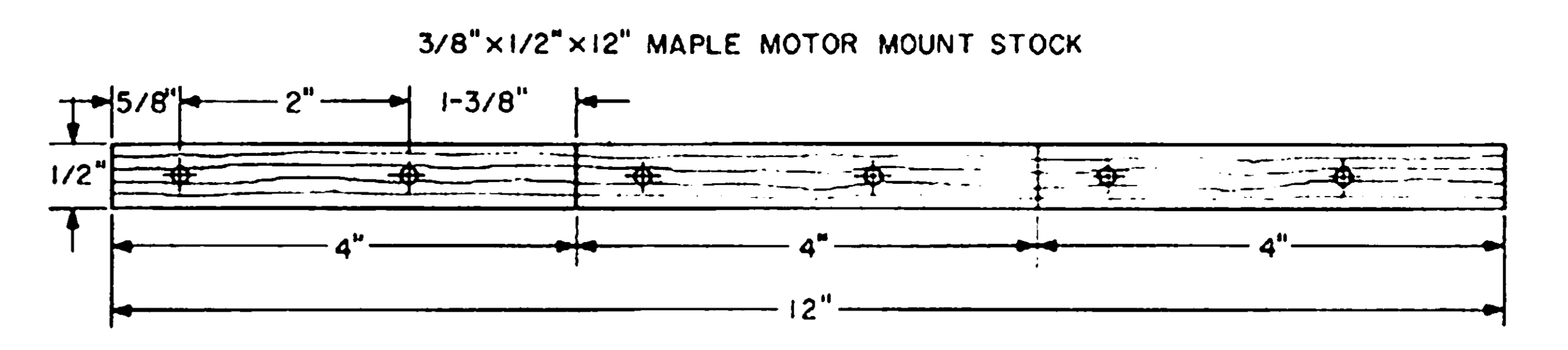
2 BLADED HEADS



ADJUST "H" SO THAT LOWER ROTOR BLADES CLEAR AFT FUSELAGE AND EMPENNAGE



ADJUSTABLE MOUNT COMPONENTS



- NOTES:
1. ALTER DIMENSIONS OF MOUNTING ASSEMBLY AND COMPONENTS TO SUIT YOUR INSTALLATION.
 2. FILE SET SCREW FLATS ON ROTOR SHAFT AT EACH WHEEL COLLAR LOCATION.
 3. USE A FLAT WASHER UNDER EACH SCREW HEAD AND NUT.
 4. STATICALLY BALANCE ROTORS.
 5. ROTORS MUST SPIN FREELY.

0.35-0.45 POWERED SPORT AUTOGYRO
2 OR 3 BLADED DUAL ROTORS
37"-38" DIAMETER ROTOR DISC

© RCM ALL COMMERCIAL RIGHTS RESERVED

GYROFALCON

DESIGNED BY Wm. L. LEHN INKED BY IMPERIAL

0 1 2 3 4 5 6

PLAN NO. 1001