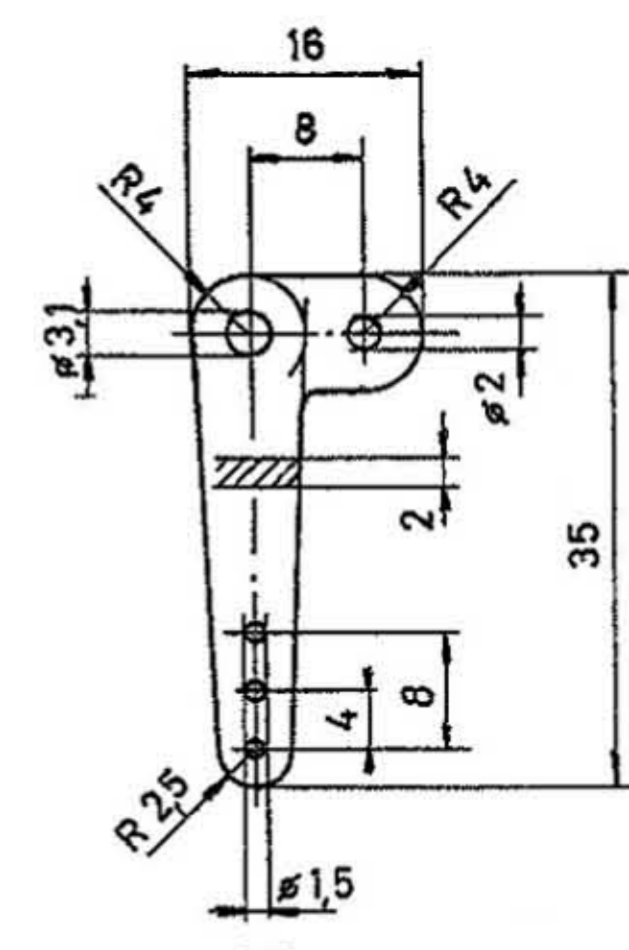
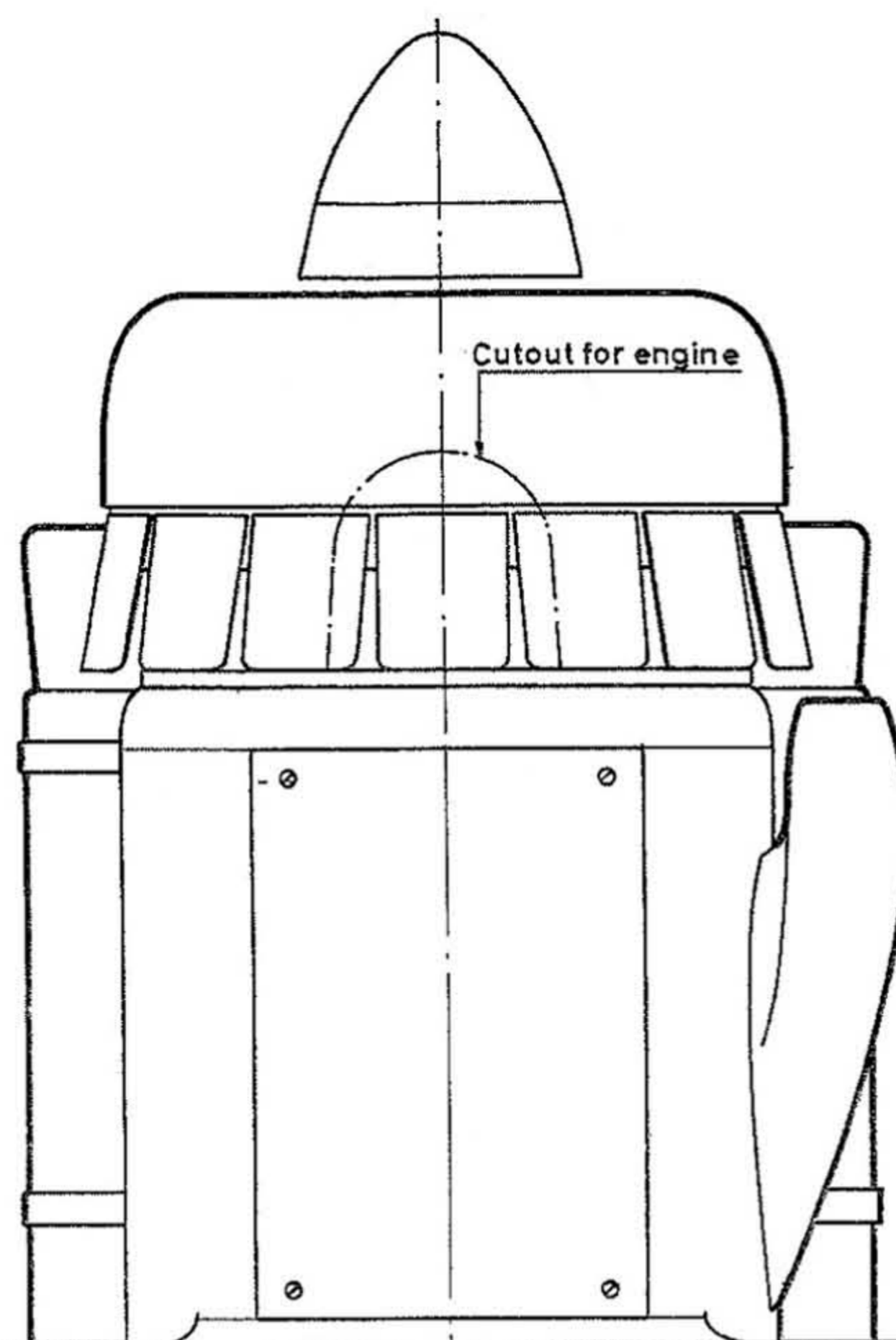
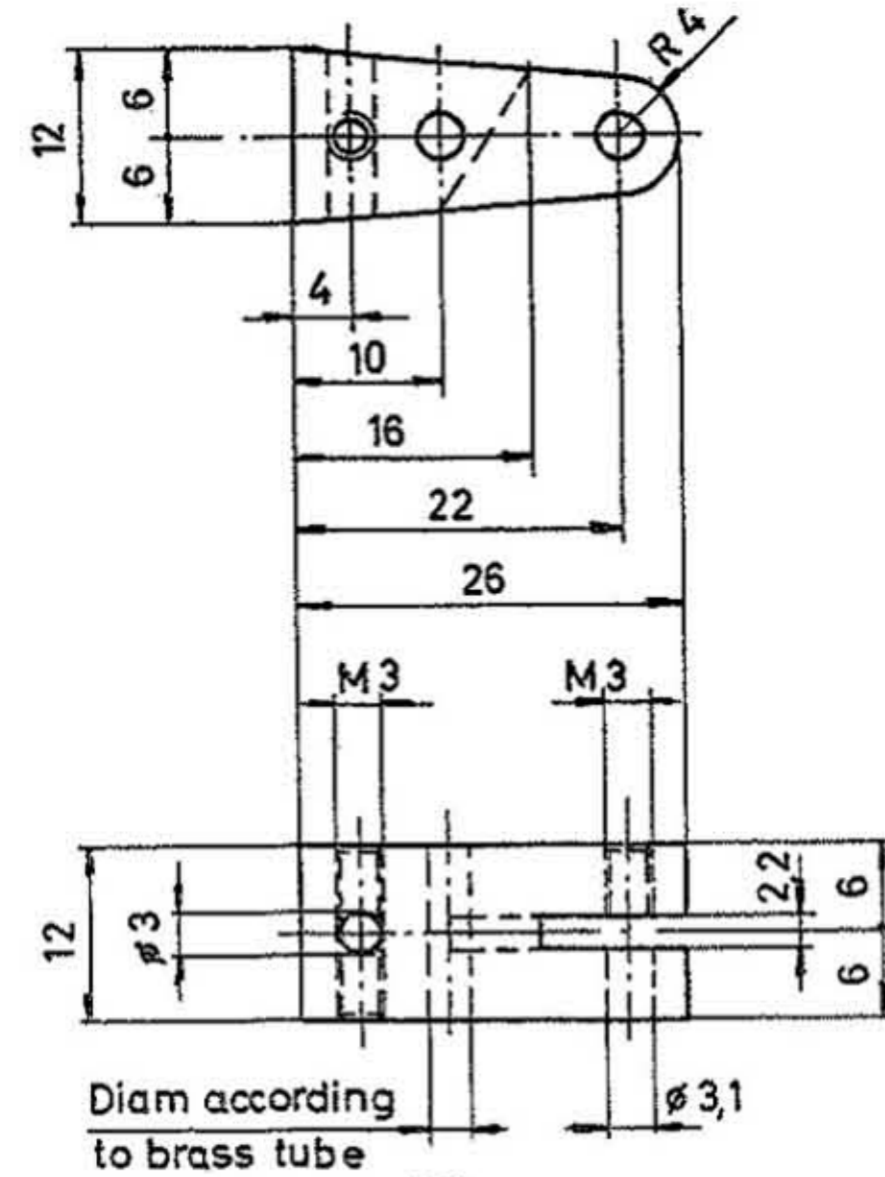


Fill space between spdrs with balsa

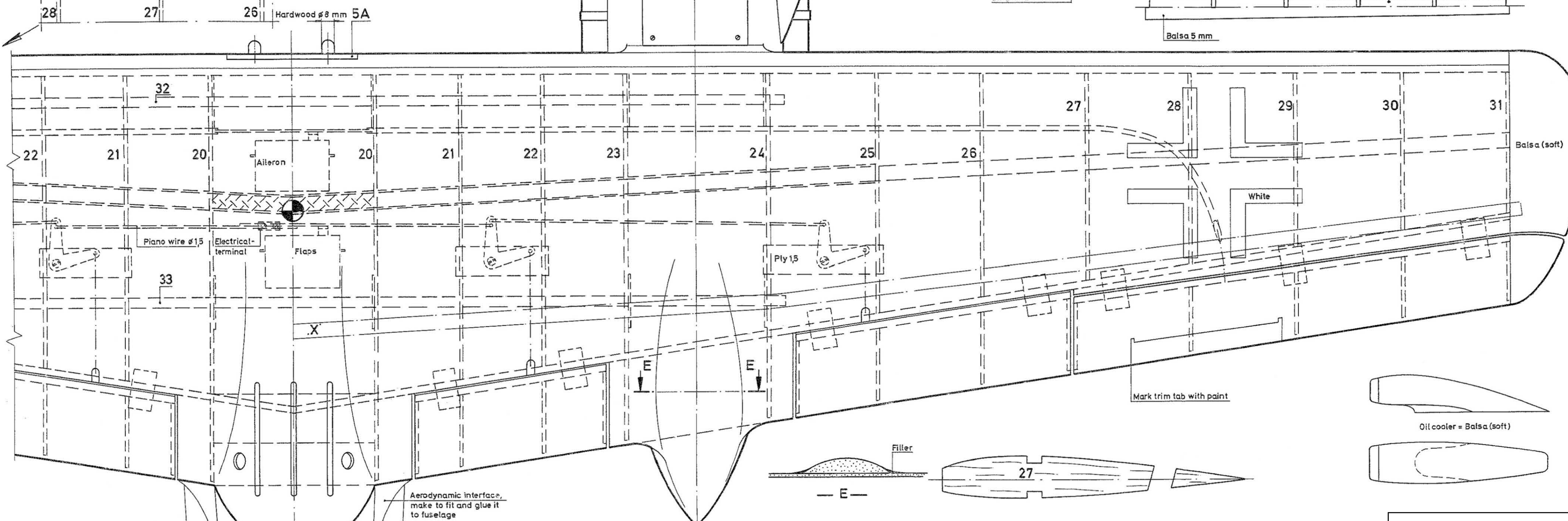
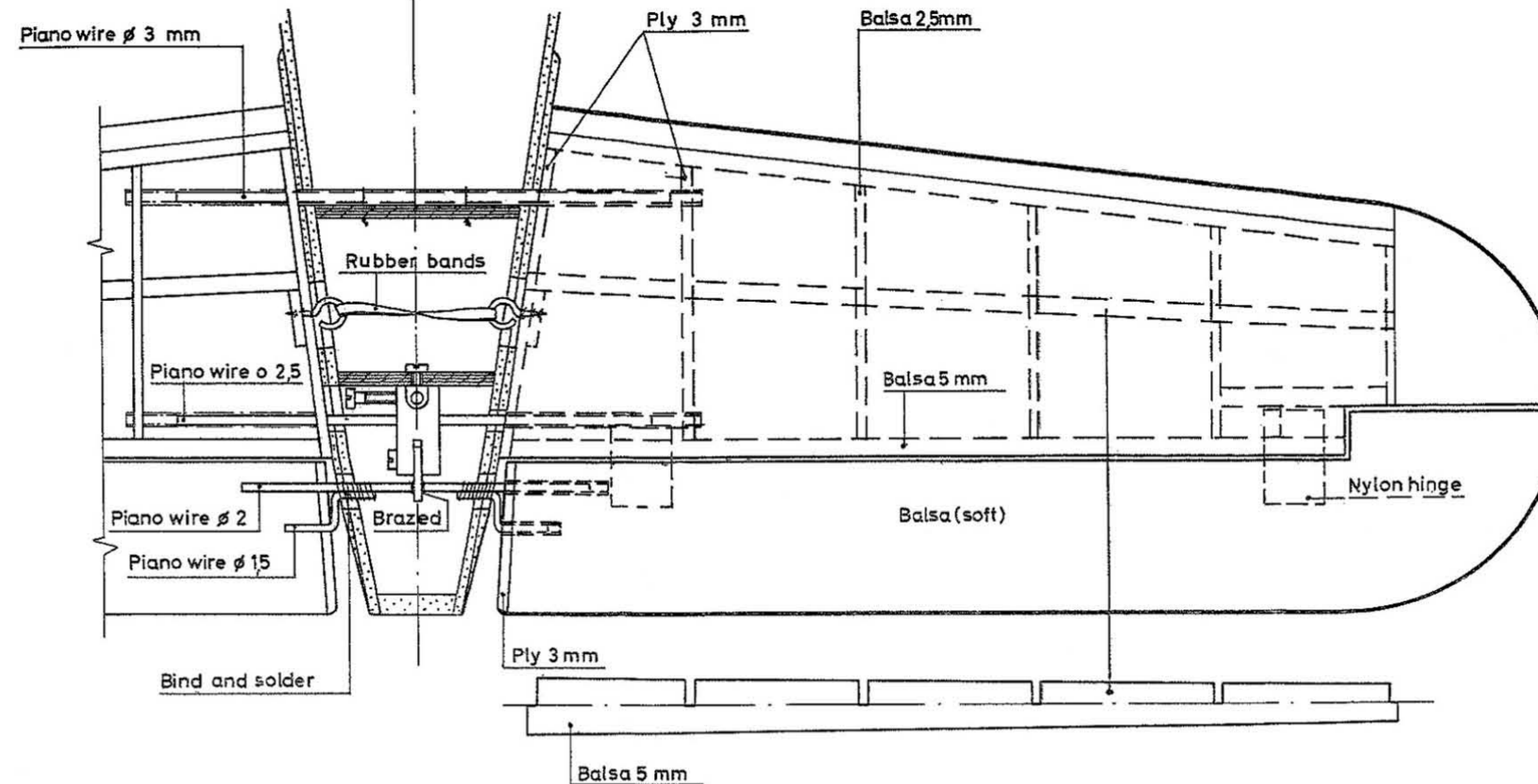
Speed indicator (Ball pen mine)



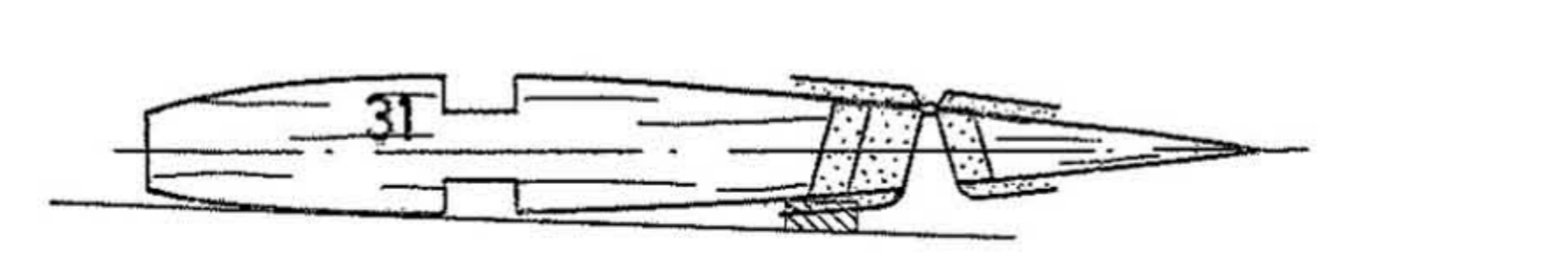
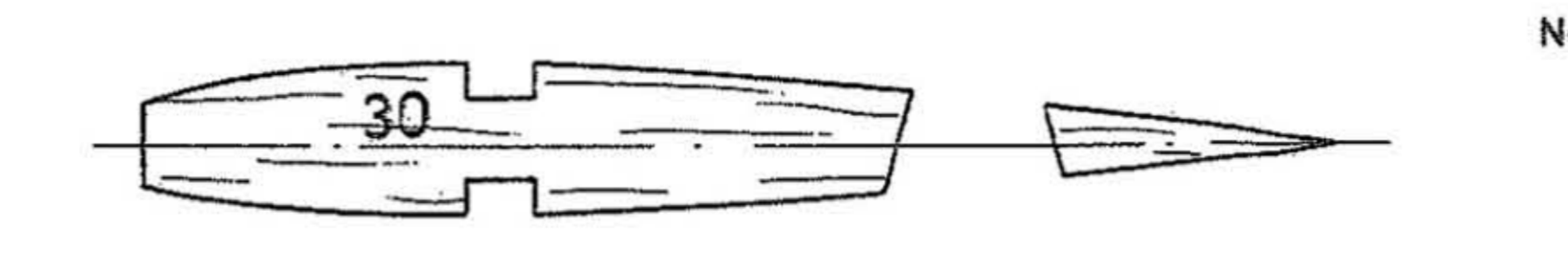
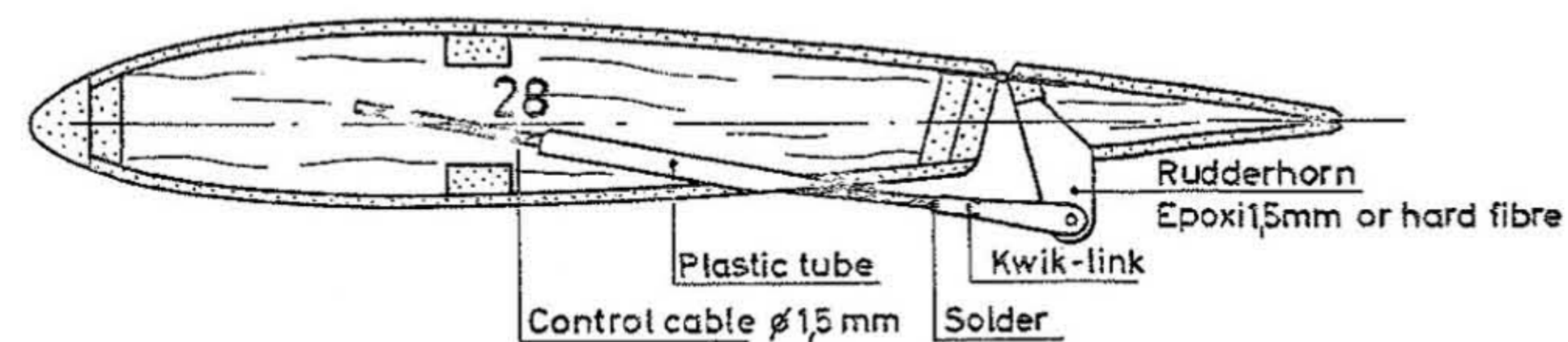
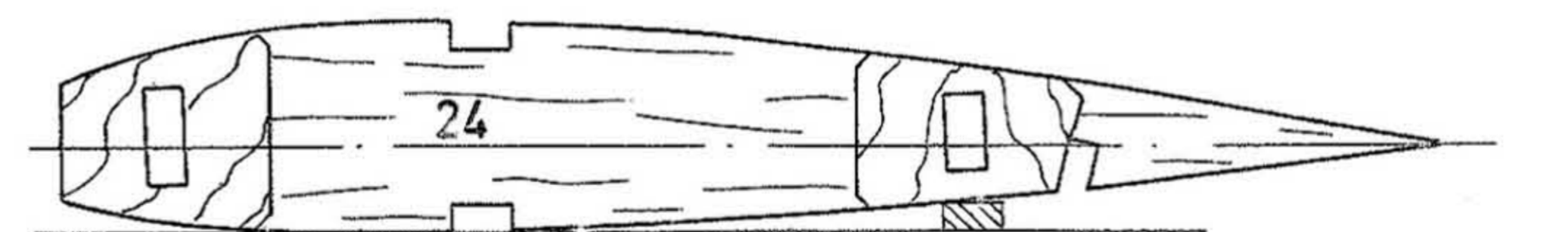
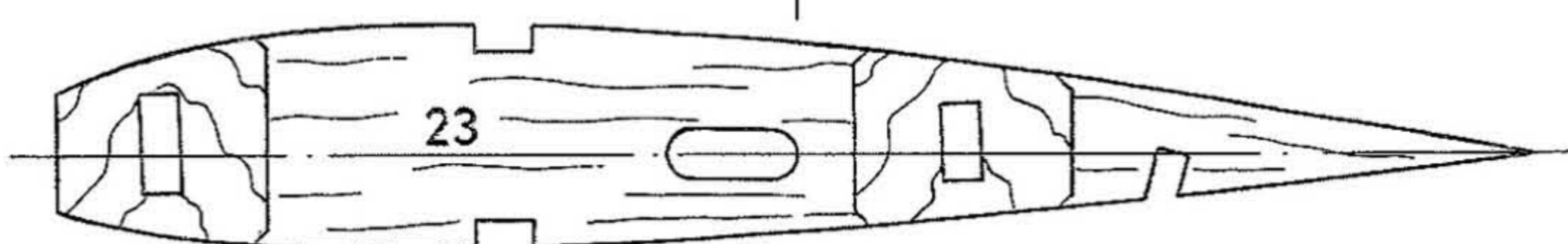
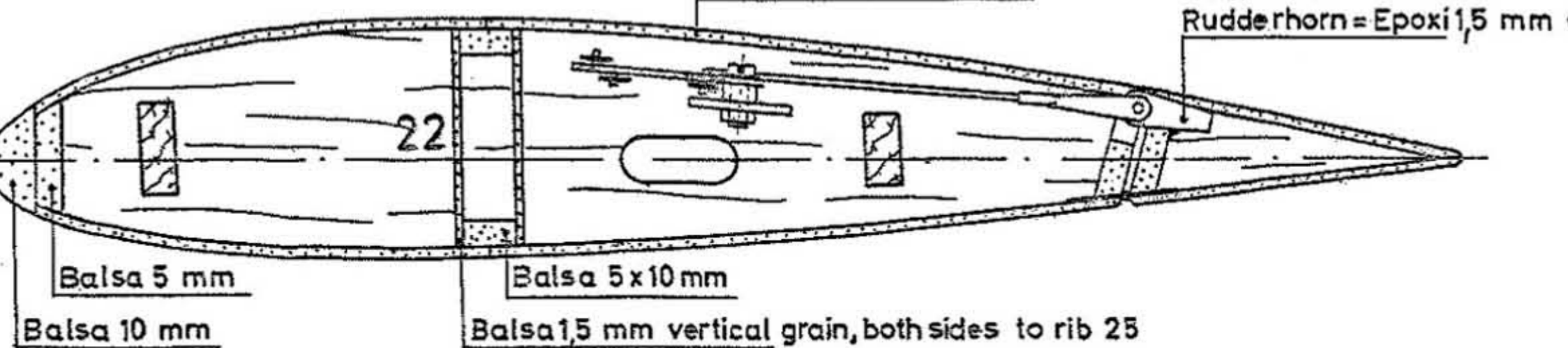
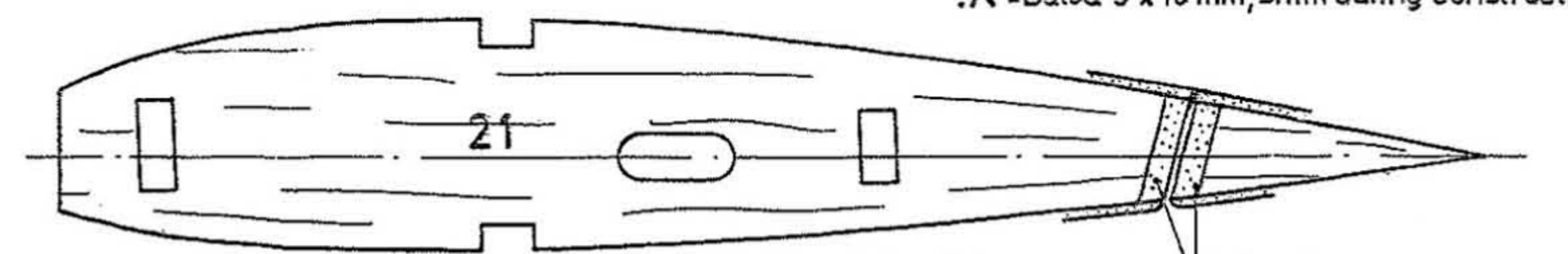
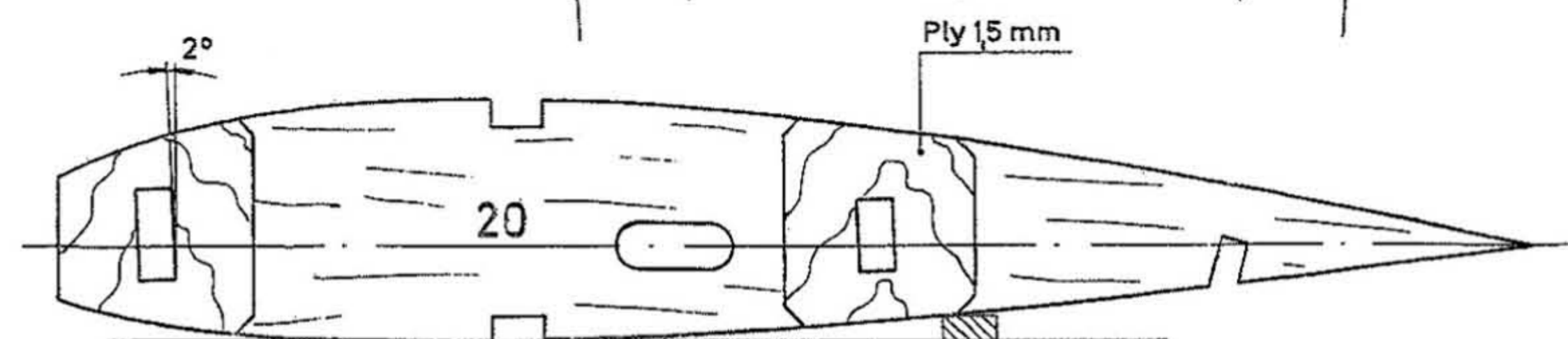
Landing lights  
Frame: cardboard  
Reflector: Alum. 0.2 mm  
Flashlight bulbs



- Balsa 10 mm
- Balsa 5 mm
- Brass tube  $\phi$  3
- Sheeting Balsa 1 mm
- Ringscrew
- Brass tube  $\phi$  2.5
- Brass tube  $\phi$  2
- Brass tube  $\phi$  1.5

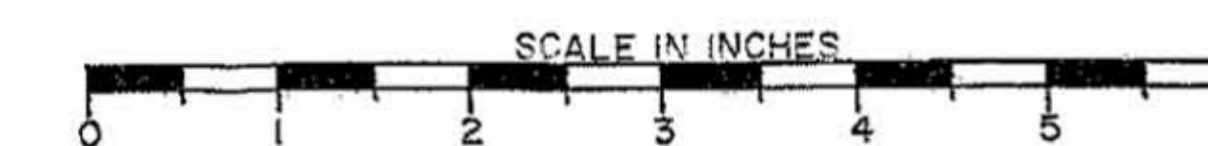


All ribs = Balsa 2,5 mm



Note: Engine cowls, canopy are available from:  
H. Stamm  
Krautgartenstr. 11  
6336 Solms  
Germany

RC-Scalemodel  
**FOCKE-WULF**  
Ta 154-A1, Moskito



Wingspan	1750 mm
Length	1400 mm
Engines	2 x 6 - 6,5 cm (.35 cu.in)
Channels	5
Weight	4600 gr (10 lbs)

Designed by *Fr. Heine*  
Inked by *Fr. Heine*  
Translated by TELAVES



All dimensions in millimeters  
1 mm  $\approx$  0.039 inches



