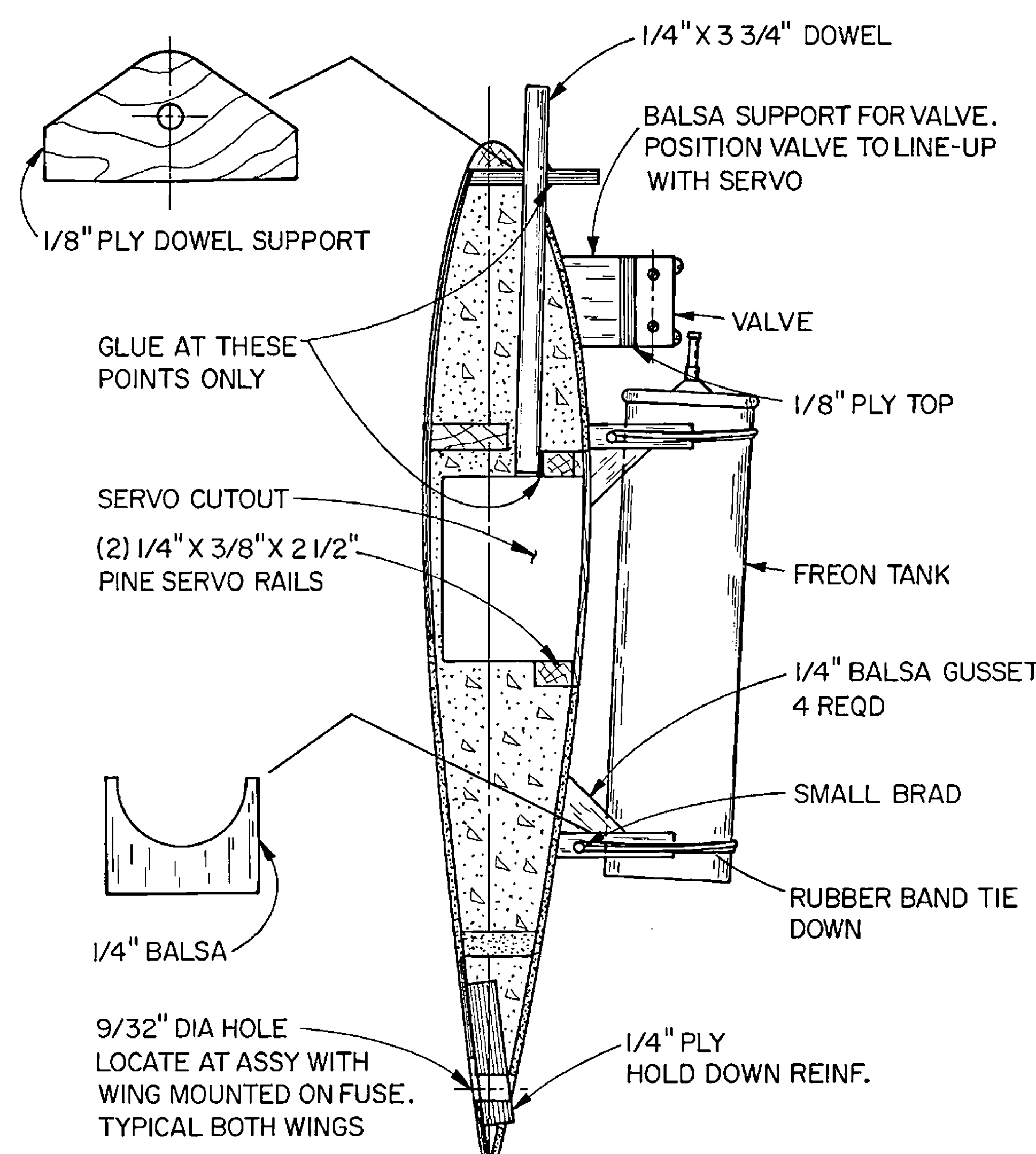


A STANDOFF SCALE MODEL OF THE LATE 1930'S
 SCALE - 2" = 1'
 WING SPAN - 64" WING AREA - 1185 SQ/IN
 LENGTH - 55" (TO END OF SPINNER)
 ENGINE DISP. - .61 TO .80 CU/IN
 RADIO - 6 CHAN OPERATION (FLAPS & RETRACTS)
 WEIGHT - 12 LBS.
 PROTOTYPE FLOWN WITH ST G-60 FI ABC - 13 X 6 PROP.
 COVERED WITH COVERITE PERMAGLOSS

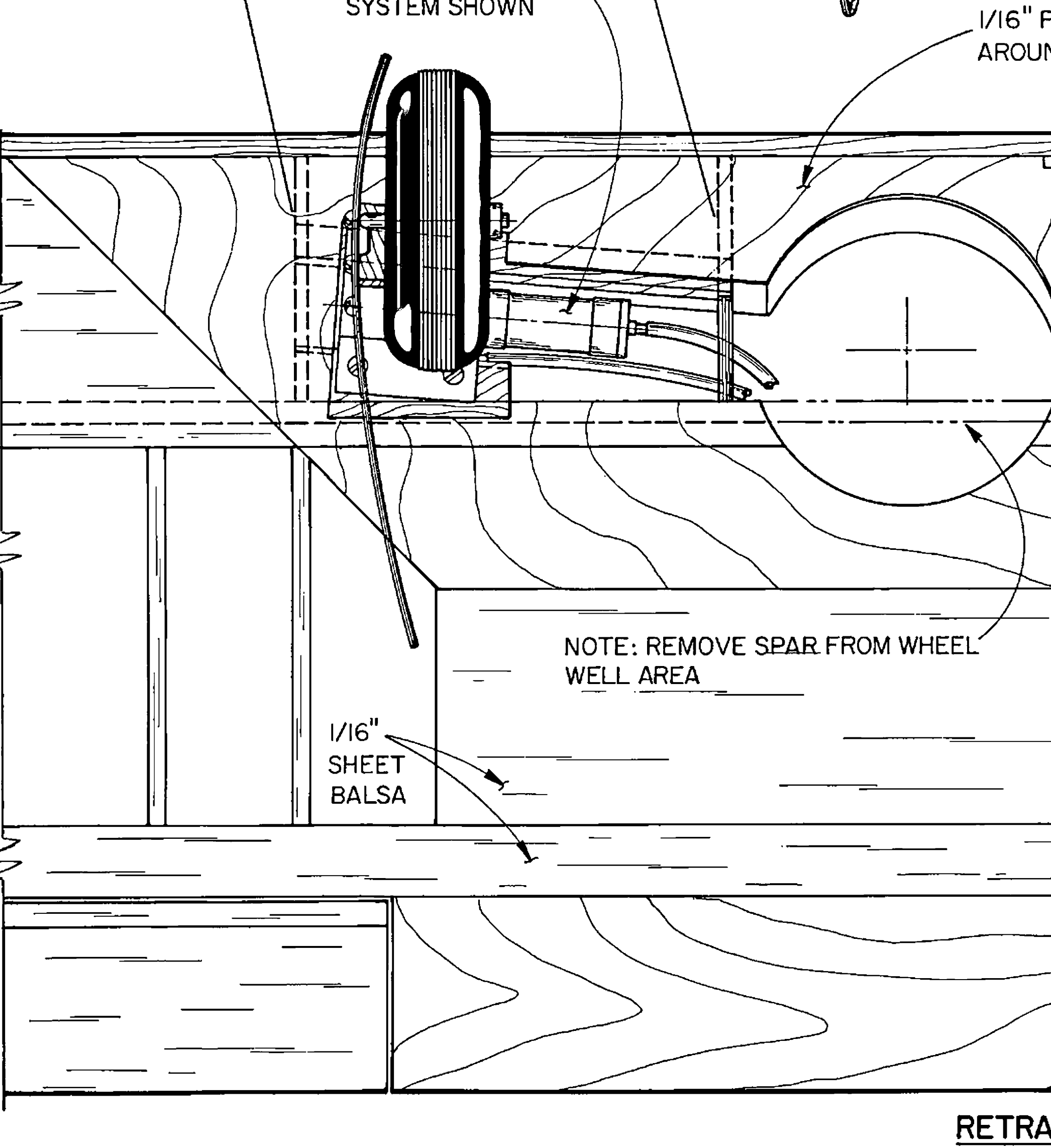
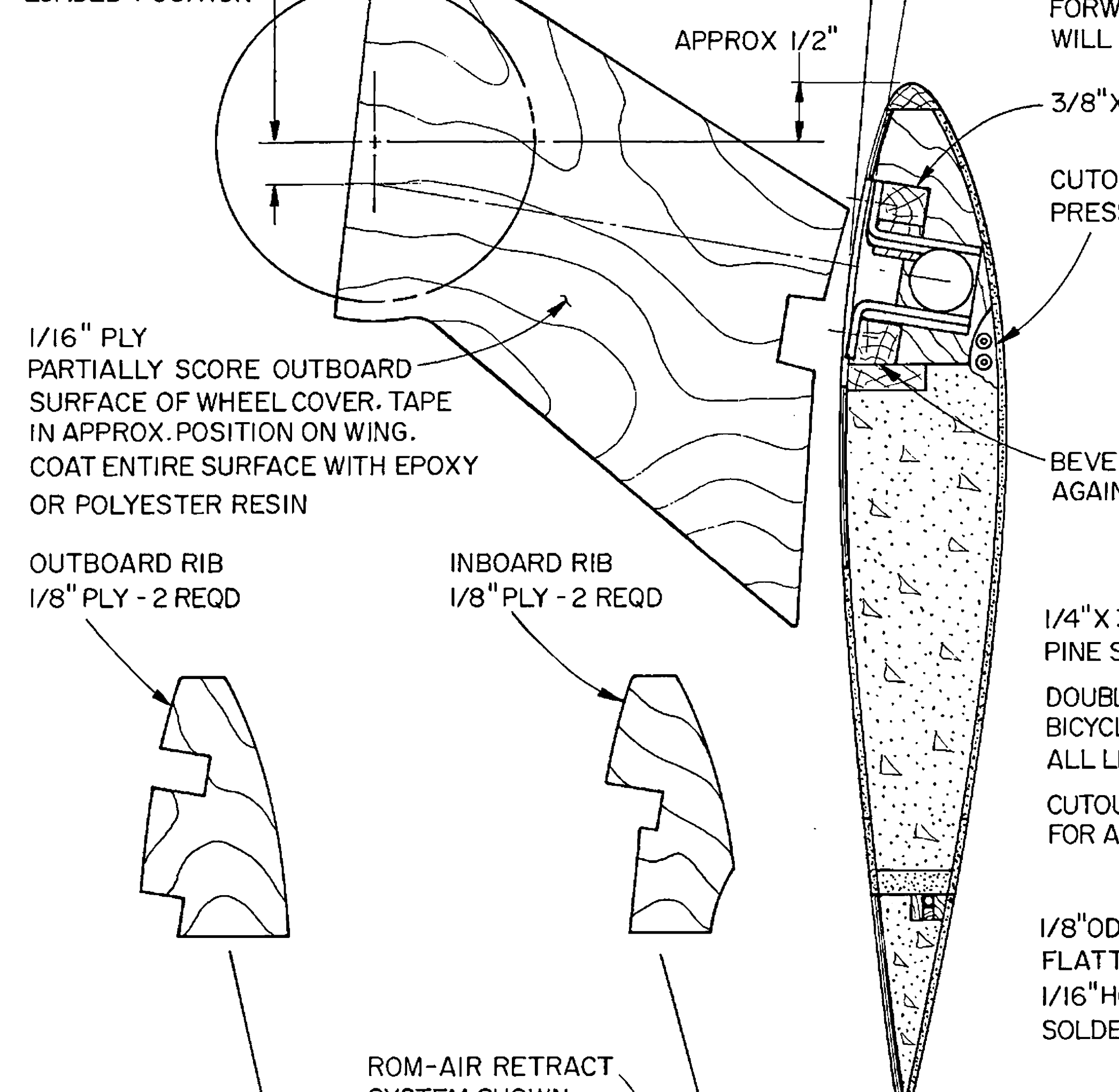
DESIGNED BY RAY DEHN

DRAWN BY JERRY SMITH

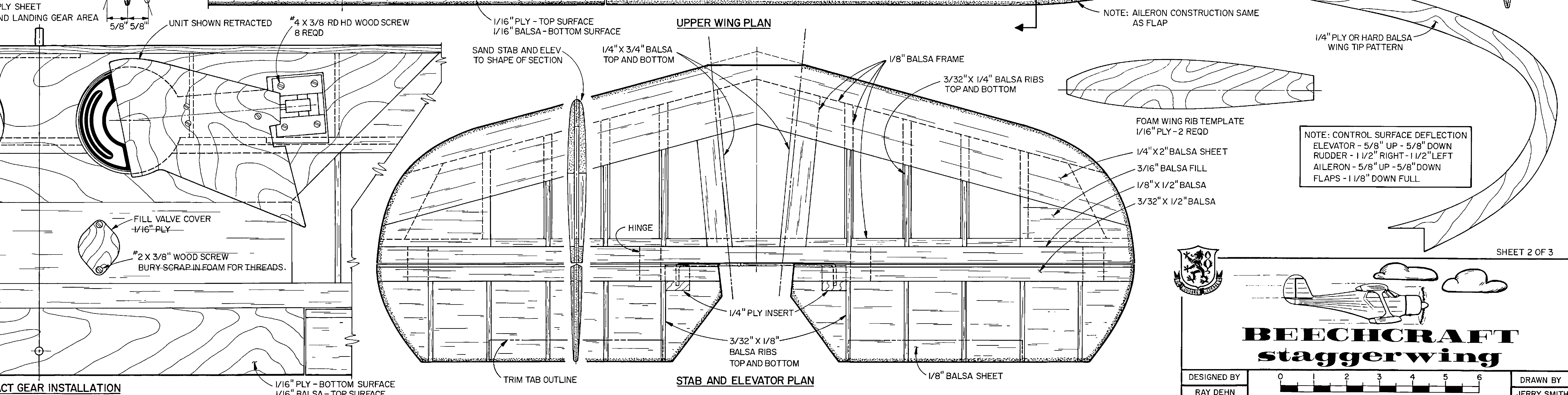
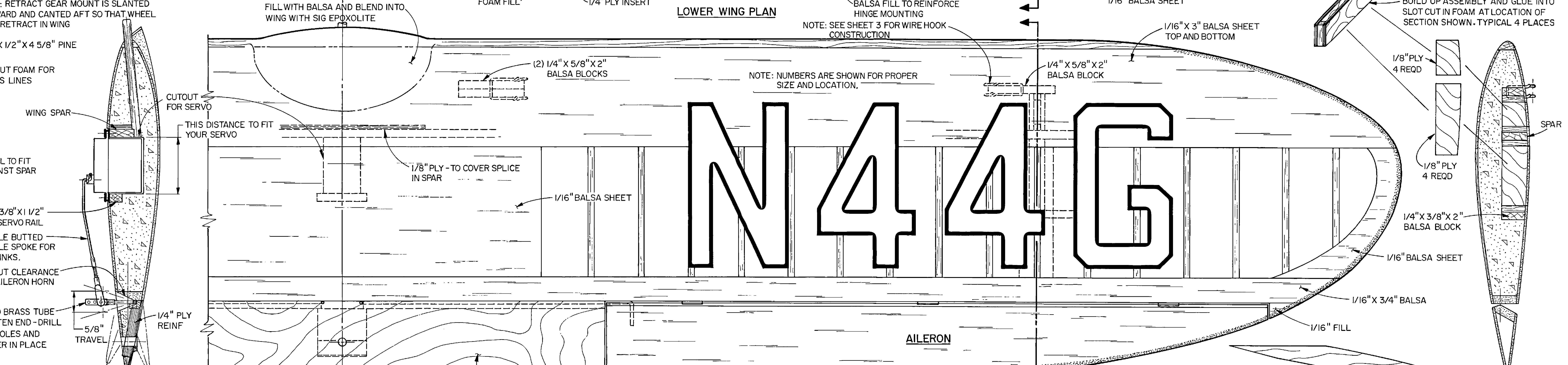
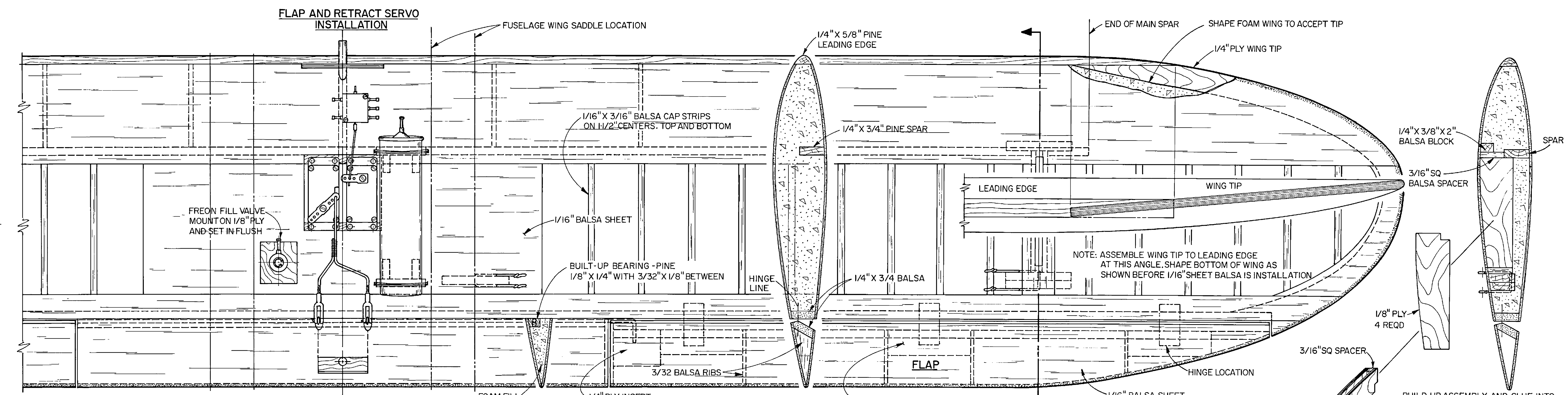
0 1 2 3 4 5 6



NOTE: WHEEL SHOWN IN LOADED POSITION



RETRACT GEAR INSTALLATION



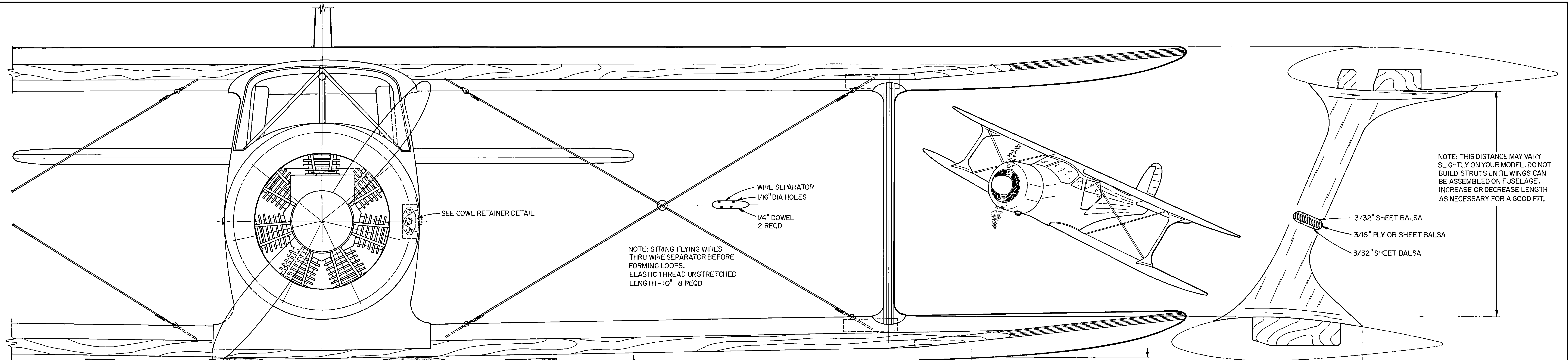
STAB AND ELEVATOR PLAN

N44G

NOTE: CONTROL SURFACE DEFLECTION
 ELEVATOR - 5/8" UP - 5/8" DOWN
 RUDDER - 1 1/2" RIGHT - 1 1/2" LEFT
 AILERON - 5/8" UP - 5/8" DOWN
 FLAPS - 1 1/8" DOWN FULL

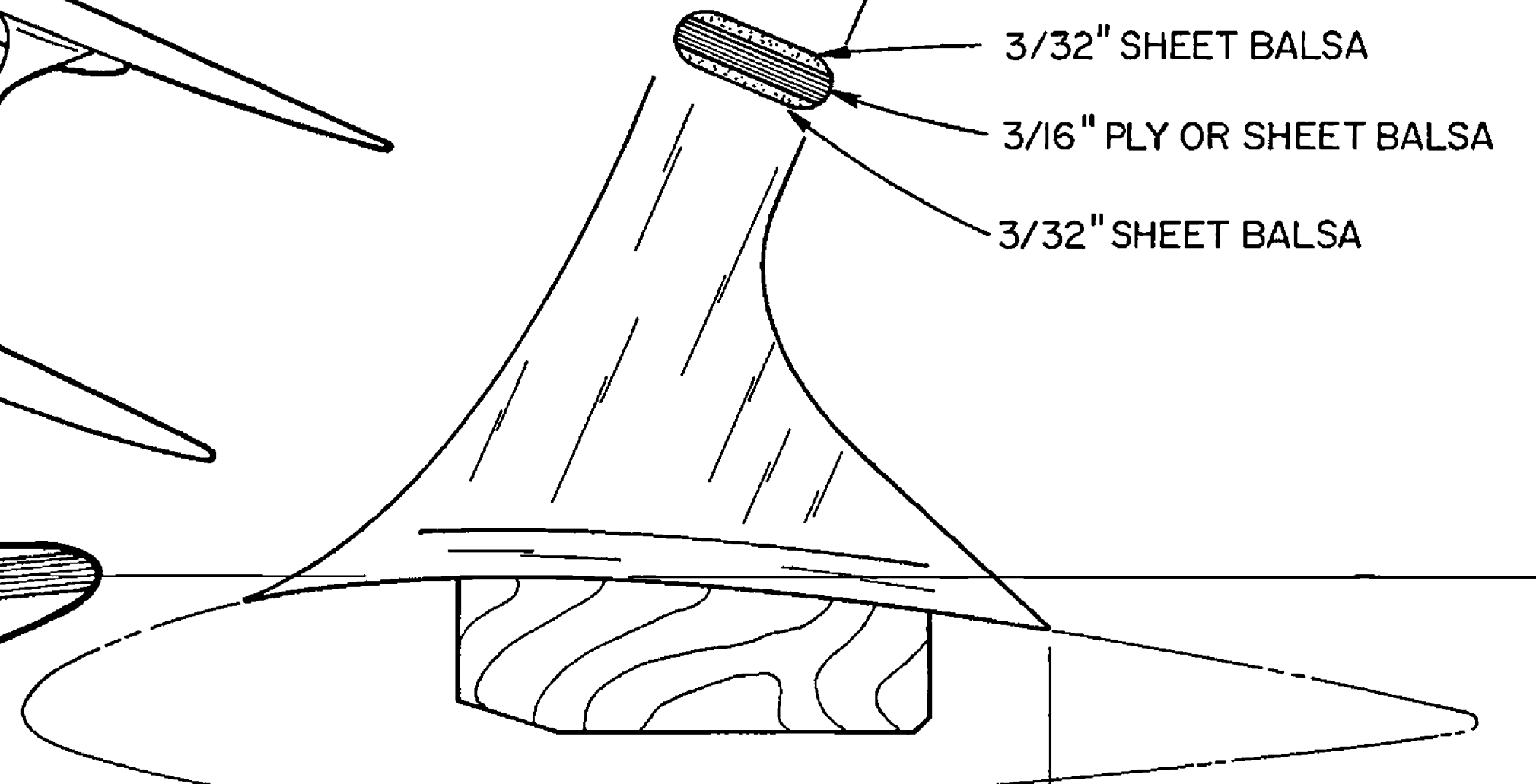


BEECHCRAFT
 staggerwing

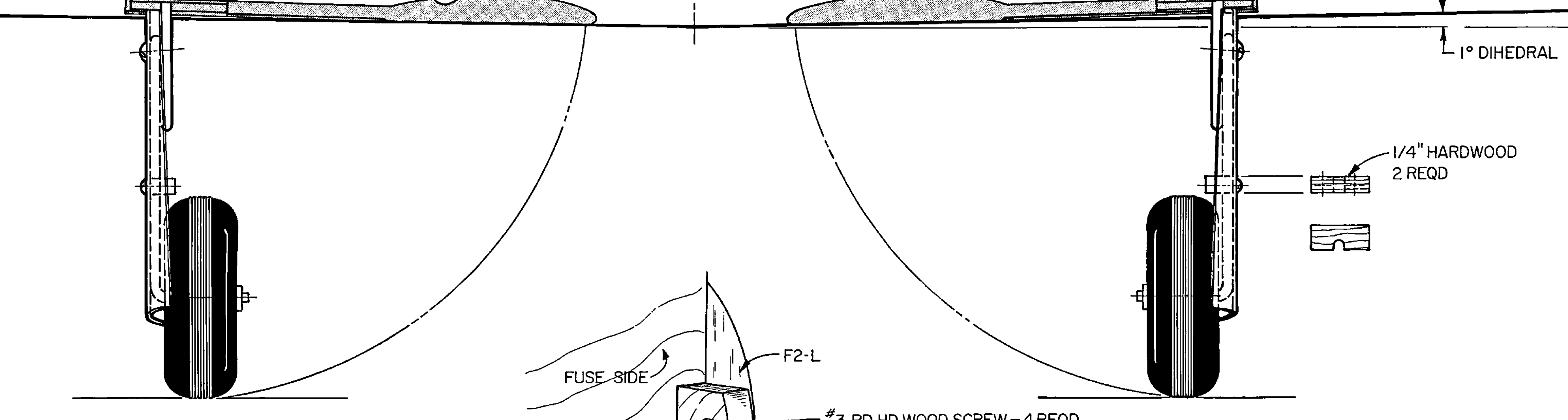


NOTE: THIS DISTANCE MAY VARY SLIGHTLY ON YOUR MODEL. DO NOT BUILD STRUTS UNTIL WINGS CAN BE ASSEMBLED ON FUSELAGE. INCREASE OR DECREASE LENGTH AS NECESSARY FOR A GOOD FIT.

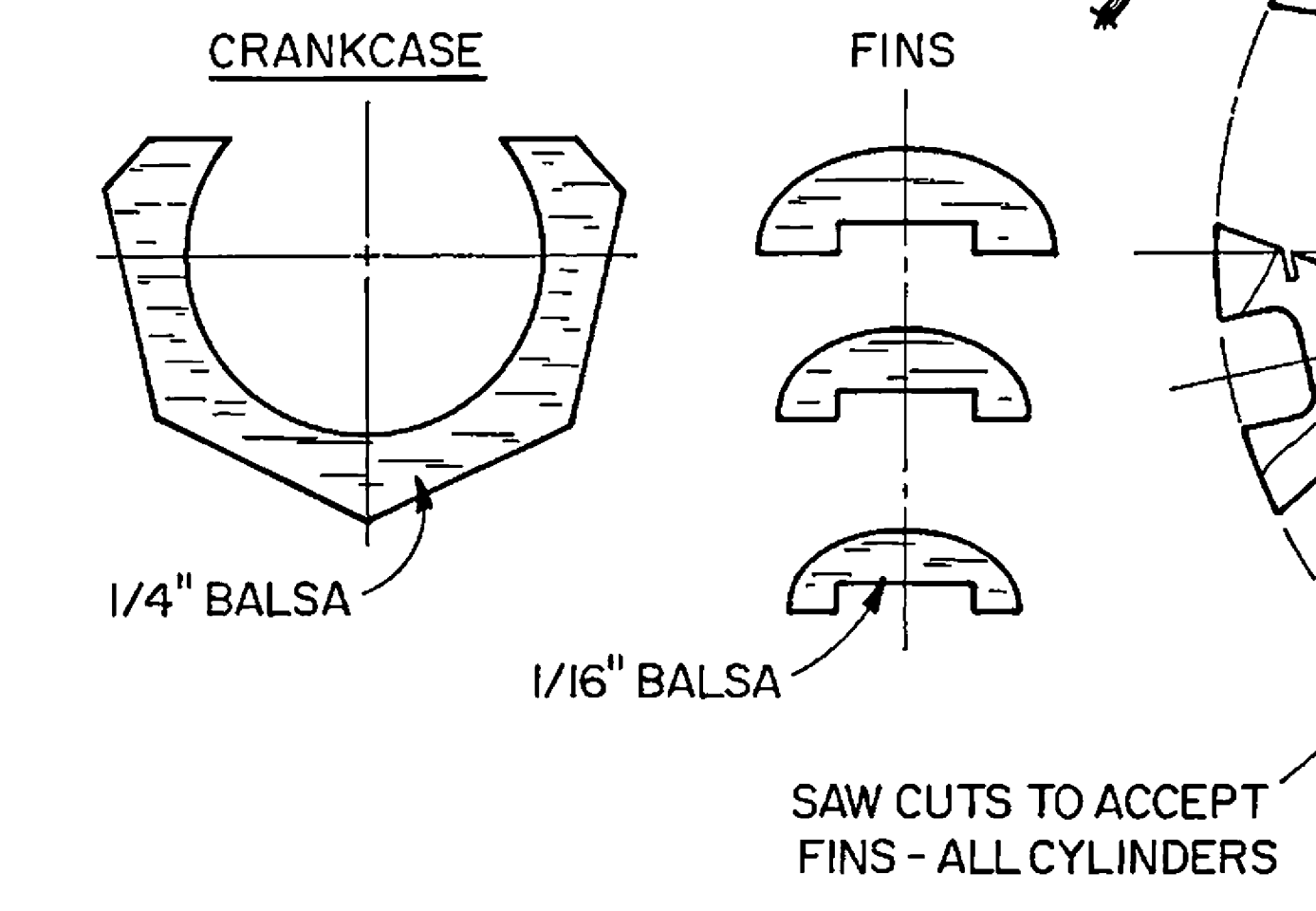
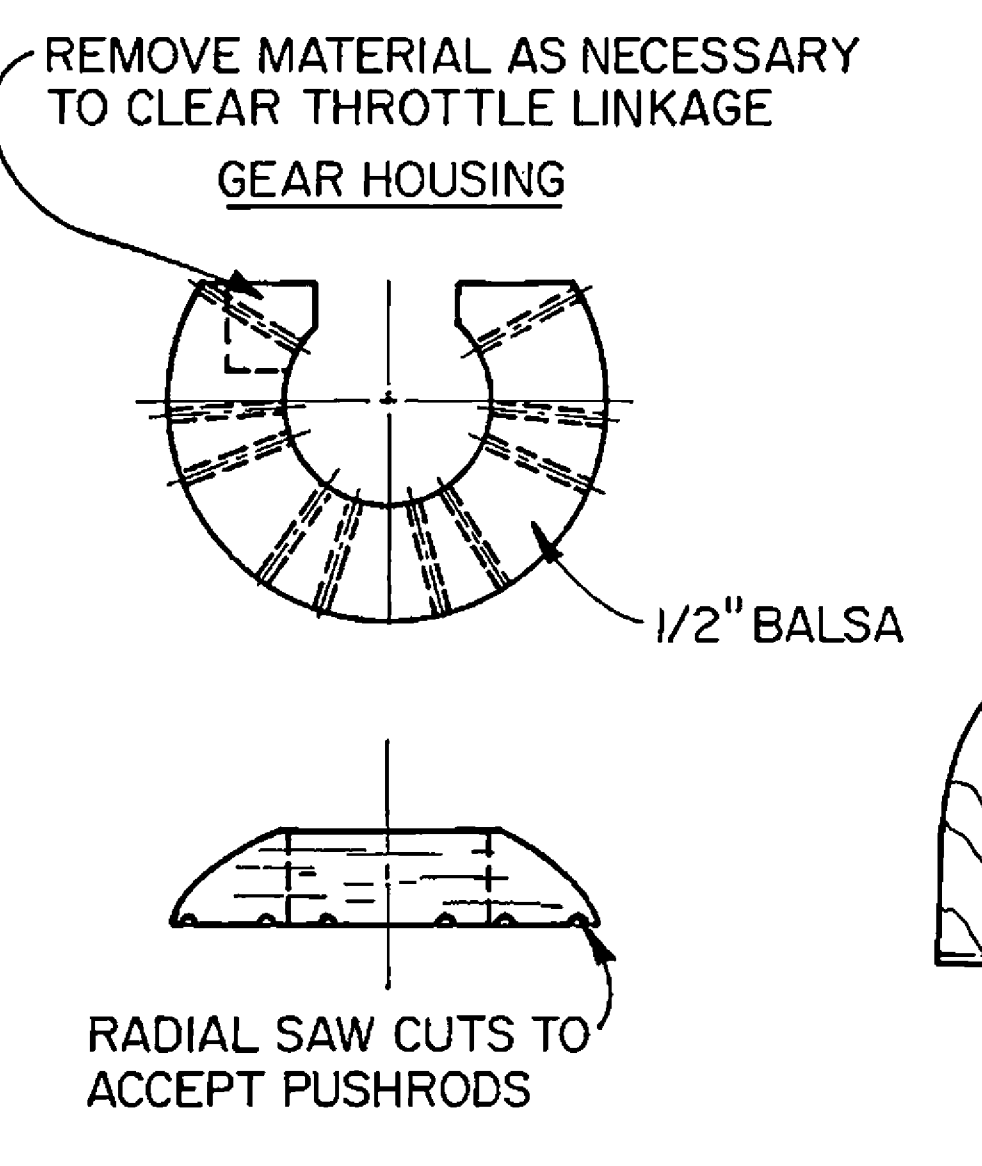
NOTE: STRING FLYING WIRES THRU WIRE SEPARATOR BEFORE FORMING LOOPS. ELASTIC THREAD UNSTRETCHED LENGTH - 10' 8 REQD



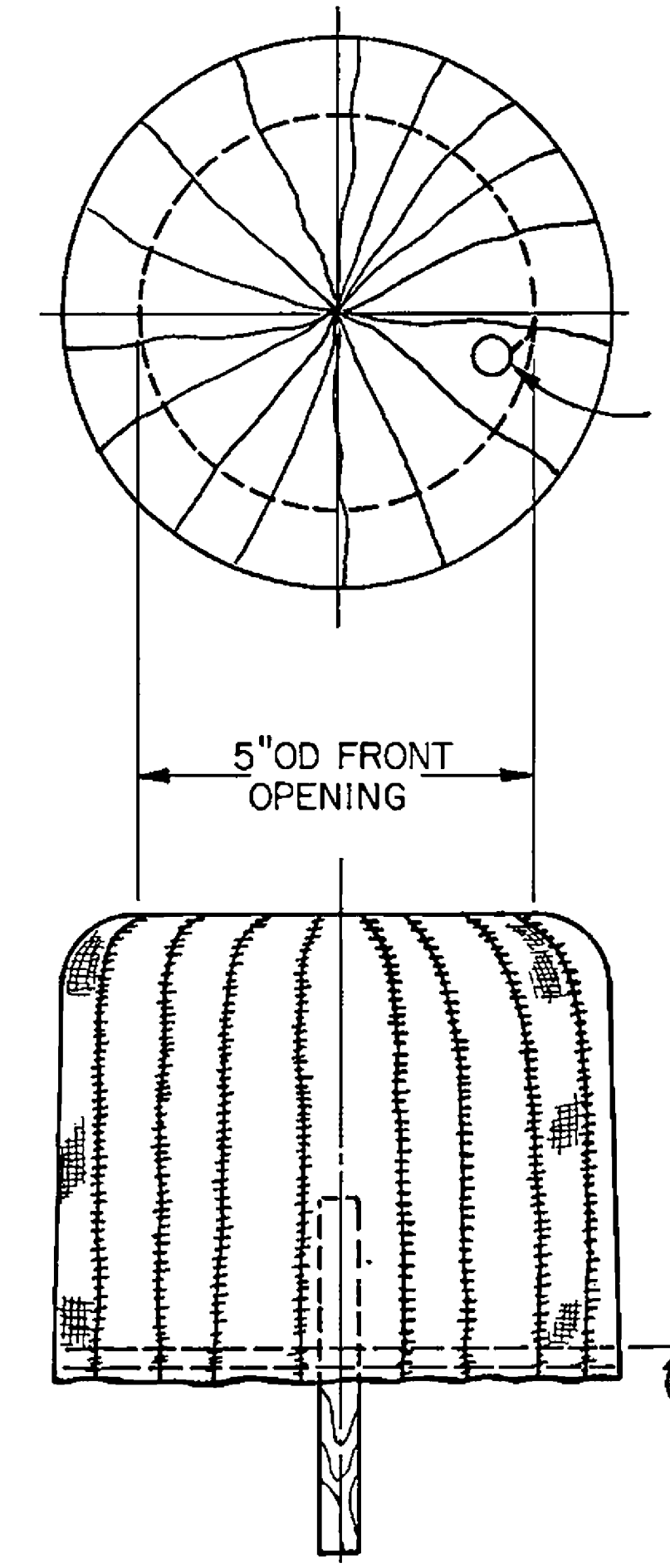
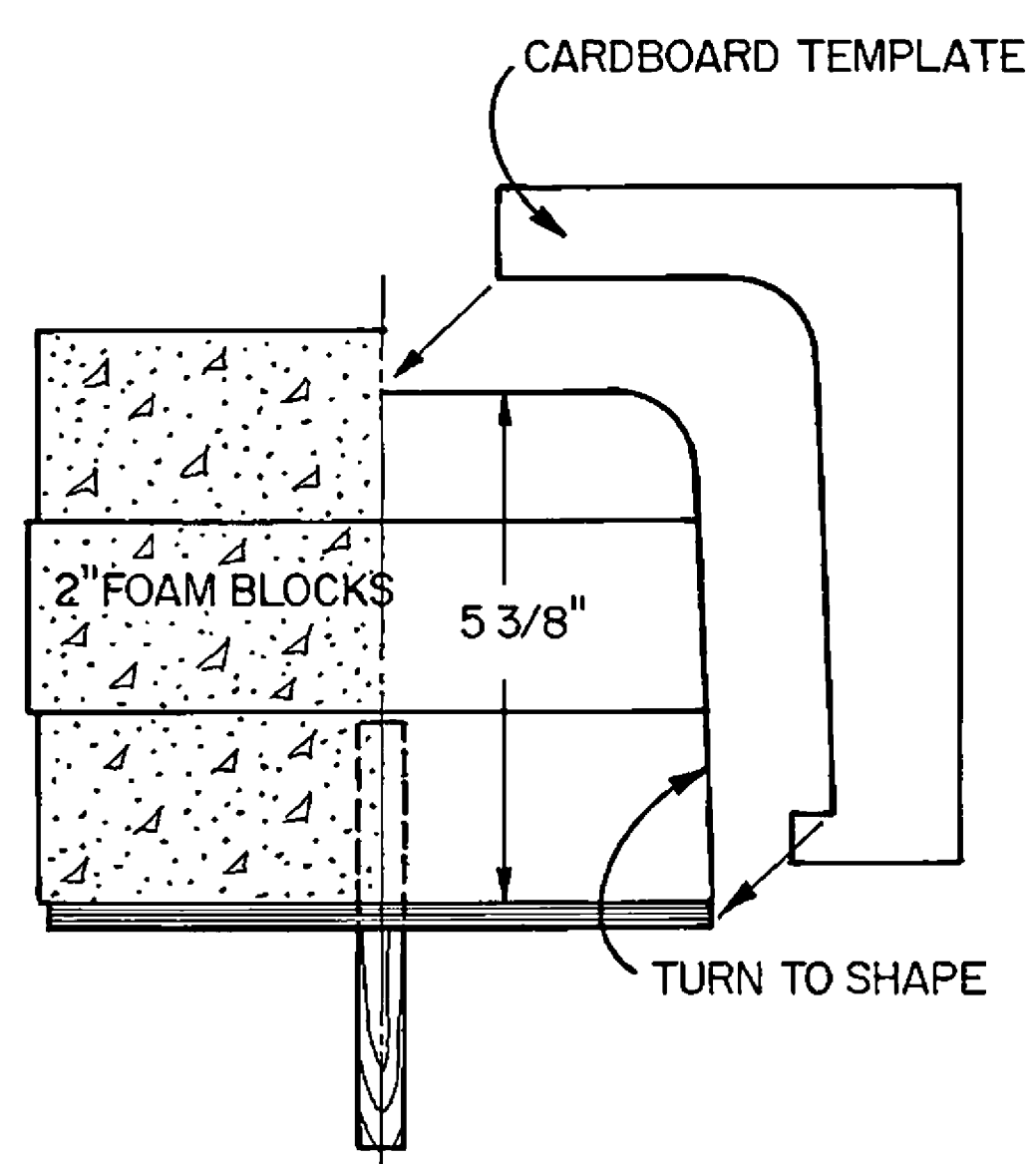
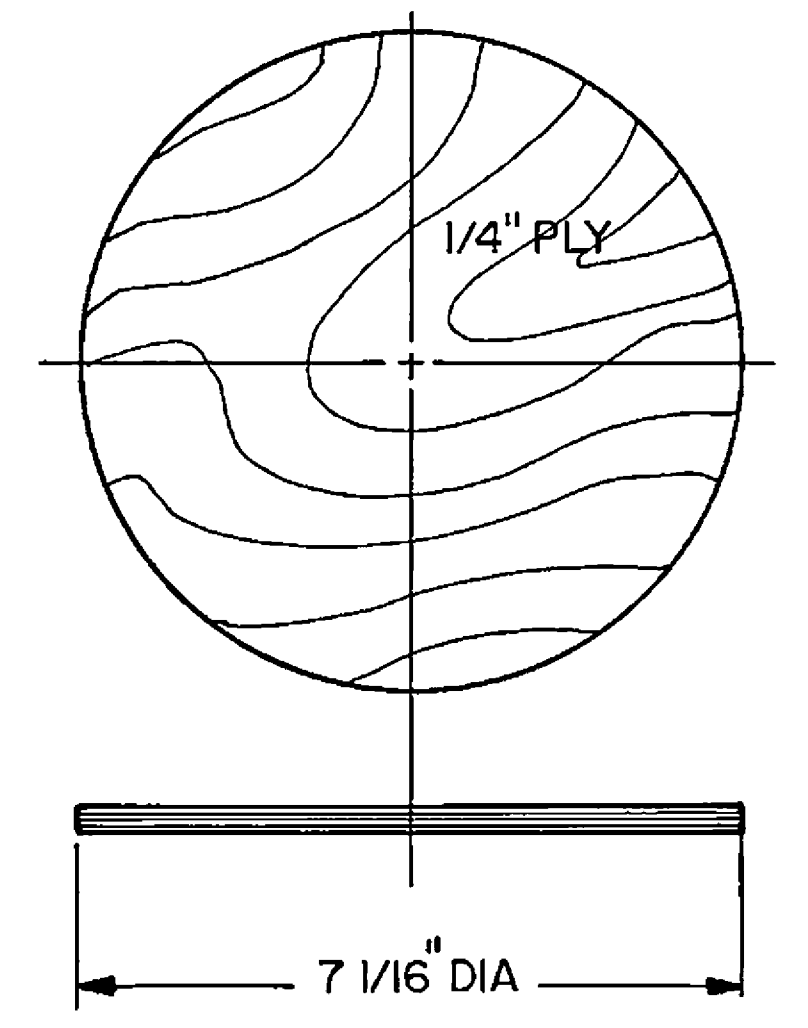
INTERPLANE STRUT



COWL RETAINER DETAIL
TYPICAL BOTH SIDES



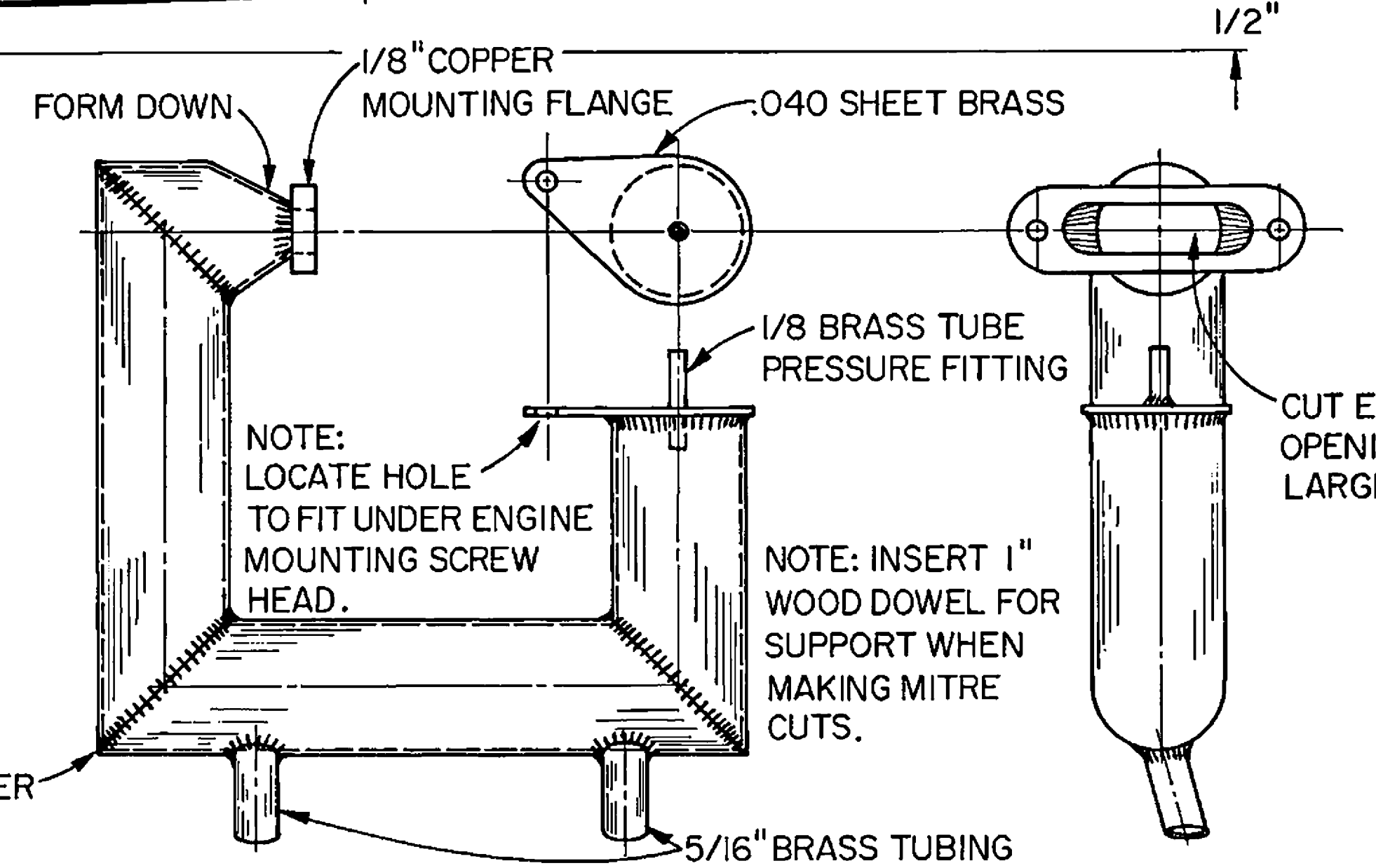
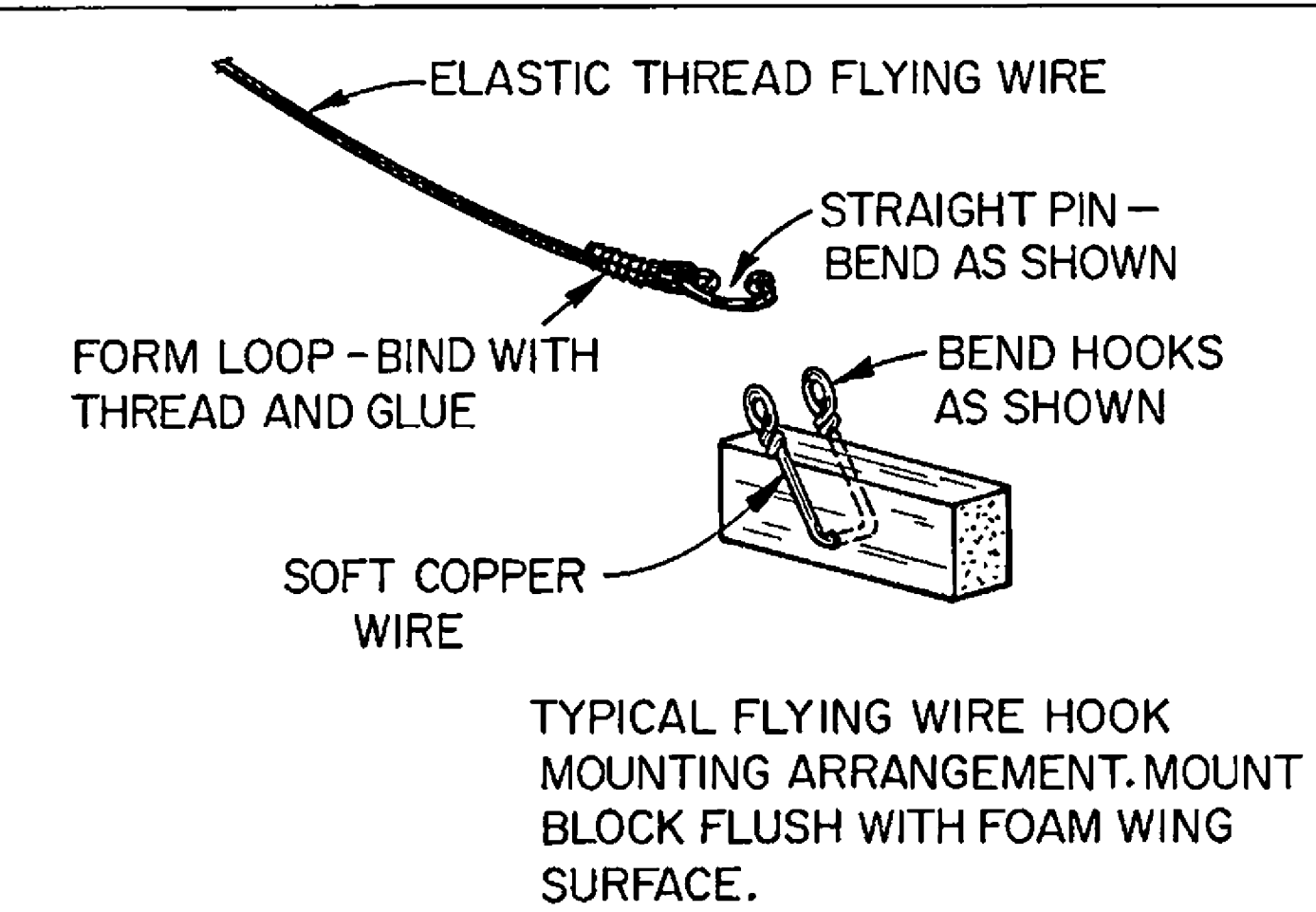
DUMMY ENGINE CONSTRUCTION



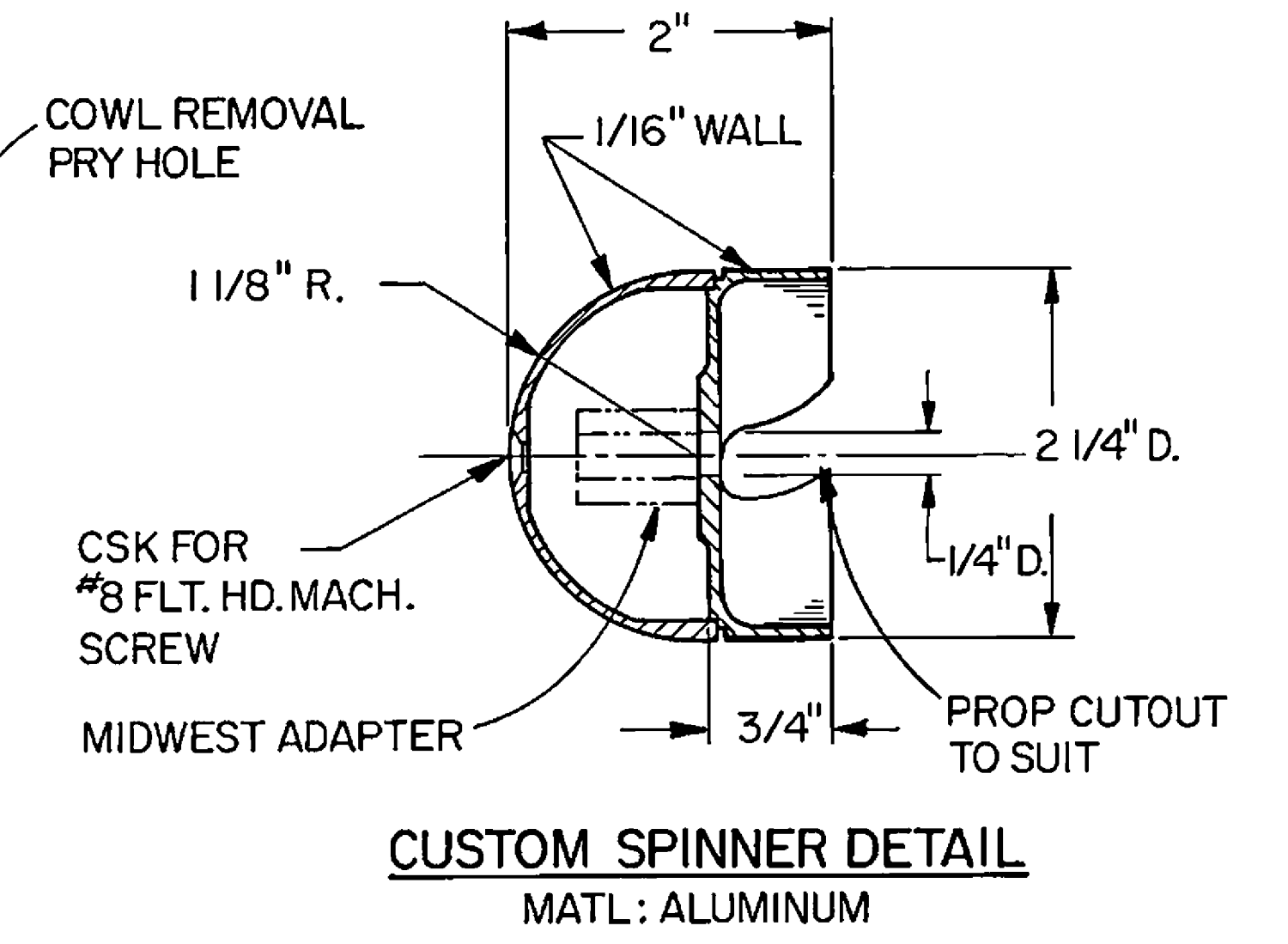
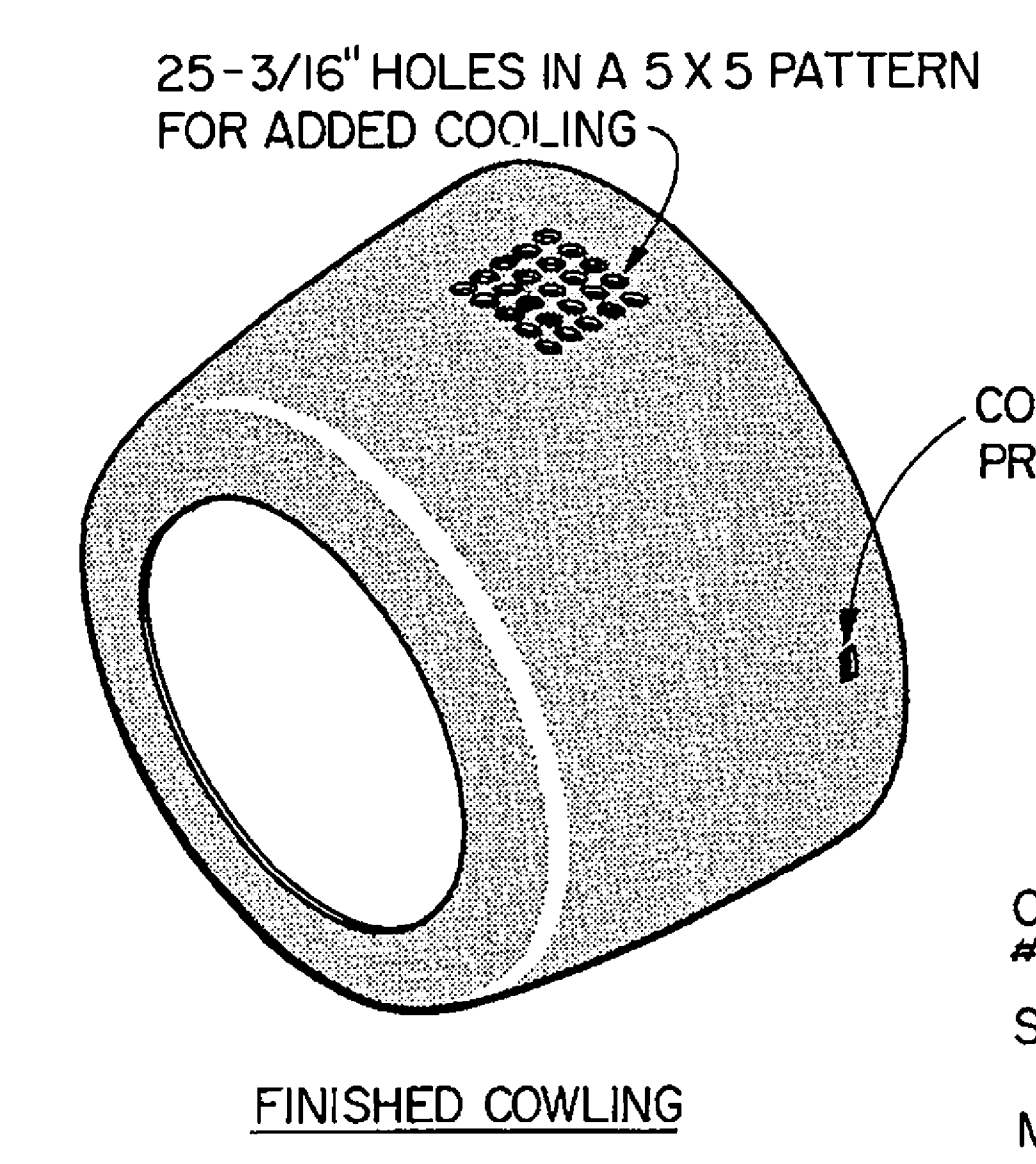
COWL CONSTRUCTION - 1/2 SIZE

- CUT A PLYWOOD FORM AS SHOWN ABOVE. USE LUMBER YARD 3-PLY AND CUT THE CIRCLE AS ACCURATELY AS POSSIBLE.
- GLUE 3 LAYERS OF 2" FOAM TO PLY FORM.
- DRILL A 1/2" HOLE IN THE CENTER OF THE PLY FORM AND EPOXY A 1/2" WOOD DOWEL 4 1/2" LONG IN PLACE AS SHOWN.
- CUT A CARDBOARD TEMPLATE FROM FULL SIZE TEMPLATE SHOWN ON PLAN.
- CHUCK THE ASSY IN A DRILL PRESS AND SHAPE WITH FILE AND SANDPAPER TO CONFORM WITH TEMPLATE.
- COAT SHAPED FORM WITH HOBBYPOXY II.*
- CUT 50 TO 55 "GORES" FROM HOBBYPOXY EASY-DOES-IT CLOTH TO APPROX DIMS SHOWN.
- BUILD COWL ON THE FORM WITH CLOTH "GORES" AND POLYESTER RESIN IN TWO LAYERS. USE A GENEROUS OVERLAP AND STAGGER 2nd LAYER OVER 1st. ABOUT 26 "GORE" ARE REQUIRED PER LAYER.
- AFTER CURING, SAND AND FILE TO A SMOOTH SURFACE.
- CUT FRONT OPENING AND TRIM OFF FLUSH WITH PLY BASE. TRY USING A SABER SAW WITH A FINE TOOTH BLADE.
- DISSOLVE FOAM WITH SOLVENT SUCH AS ACETONE.

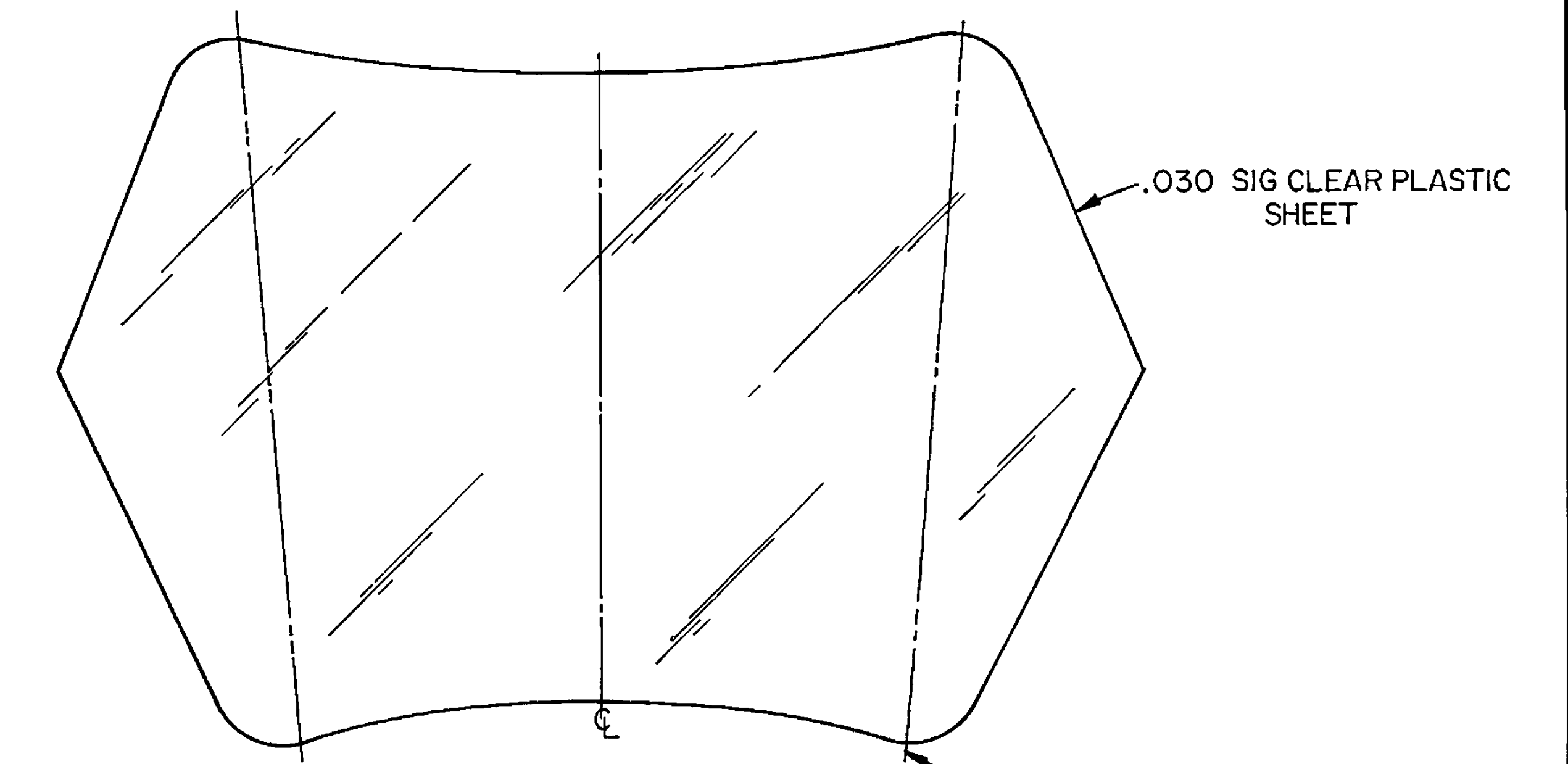
* NOTE: A BALLOON PULLED OVER THE SHAPED FOAM PROVIDES A SMOOTH SURFACE INSIDE THE COWL AND AN EXCELLENT RELEASE AGENT.



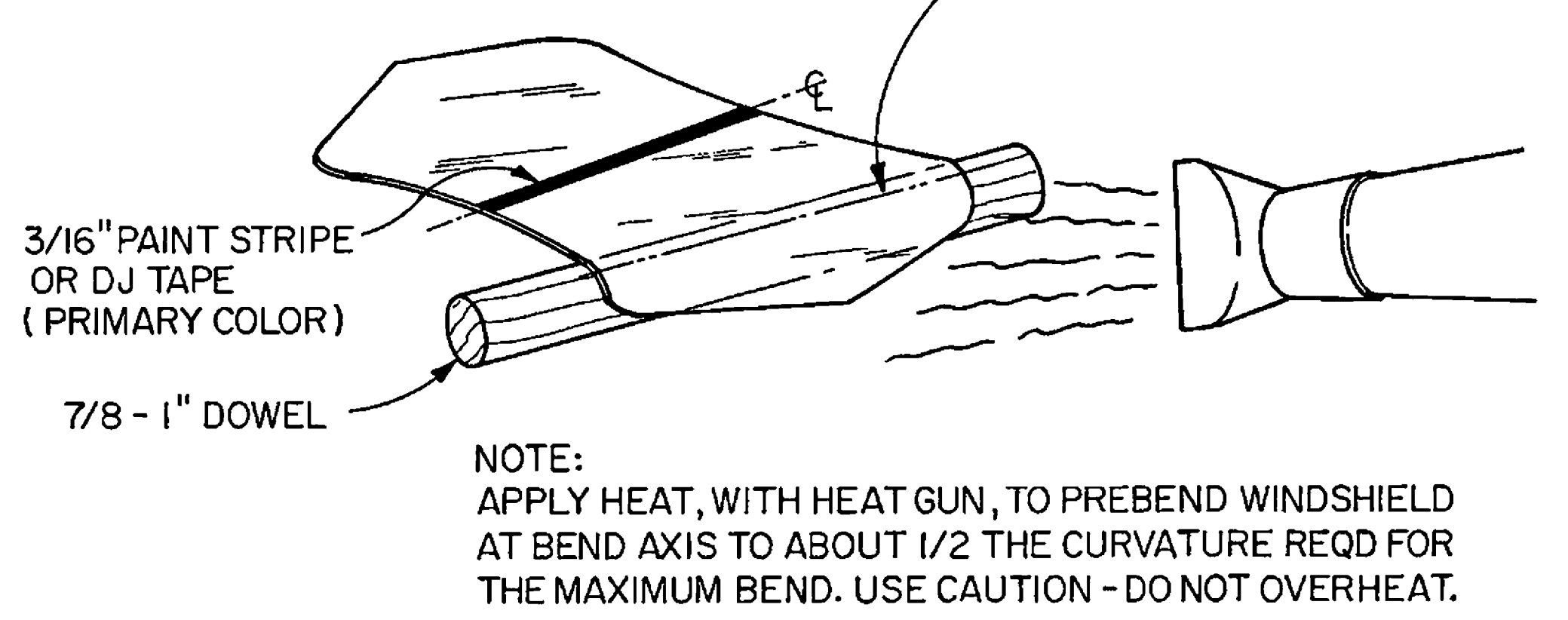
MUFFLER DETAIL
MATL: 1" SHOWER CURTAIN ROD



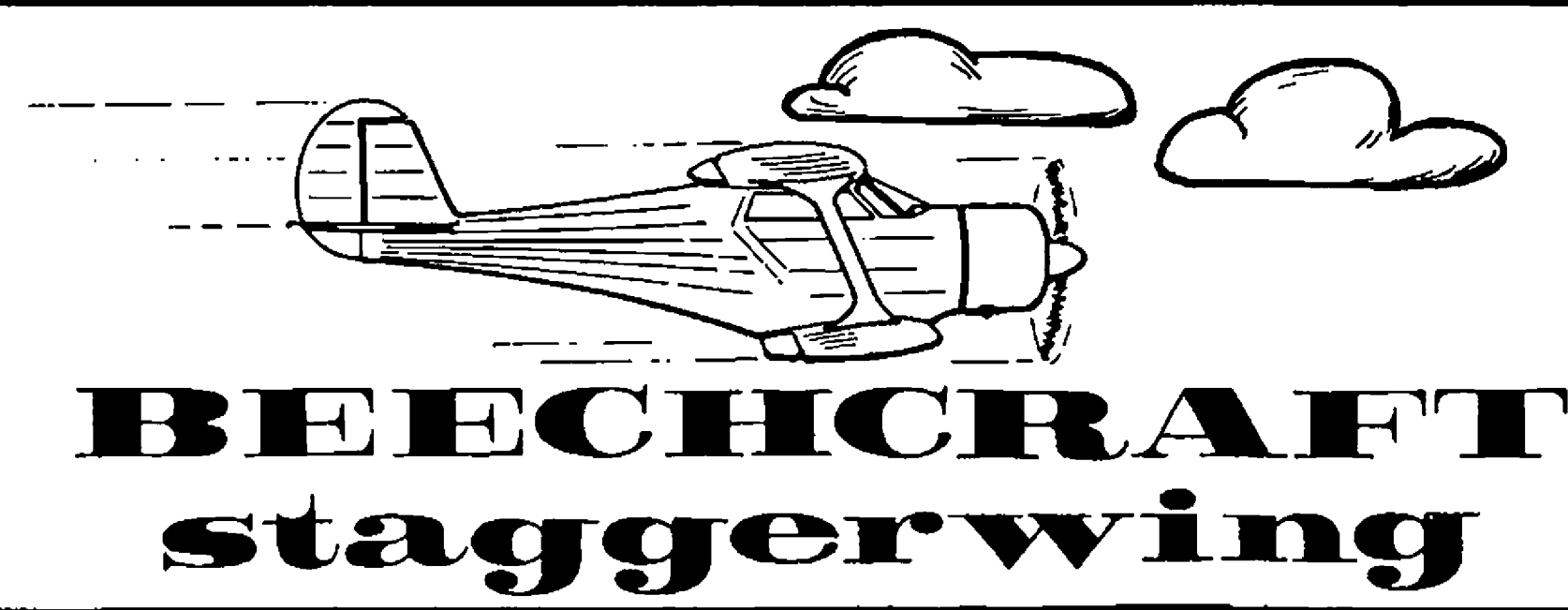
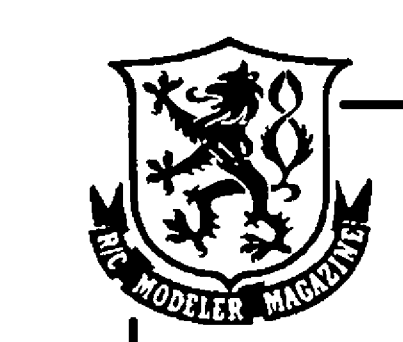
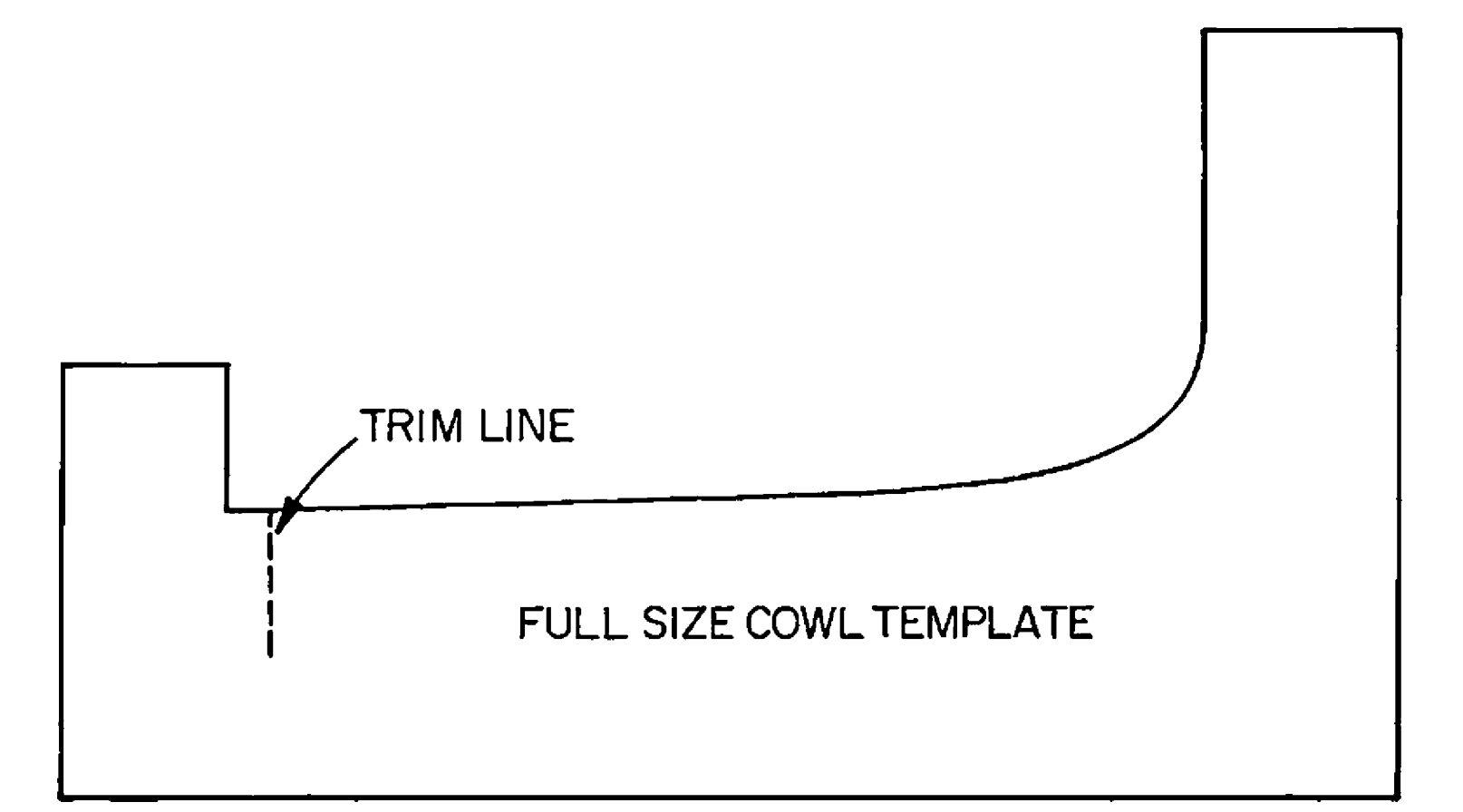
CUSTOM SPINNER DETAIL
MATL: ALUMINUM



WINDSHIELD PATTERN



WINDSHIELD DETAIL



BEECHCRAFT
staggerwing