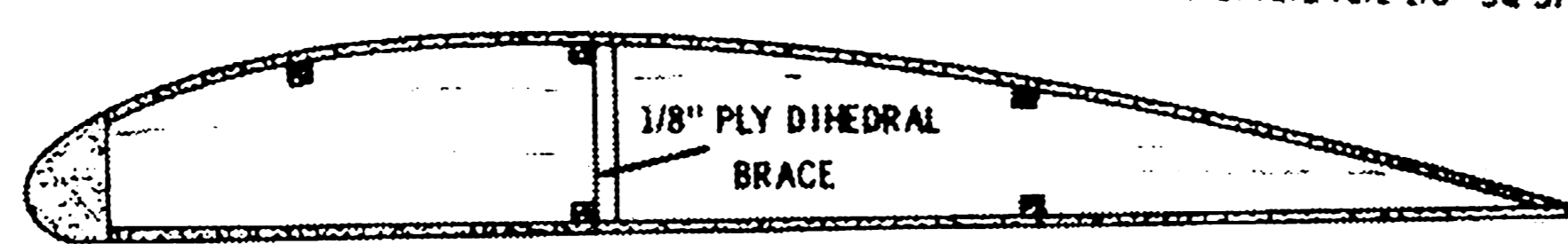
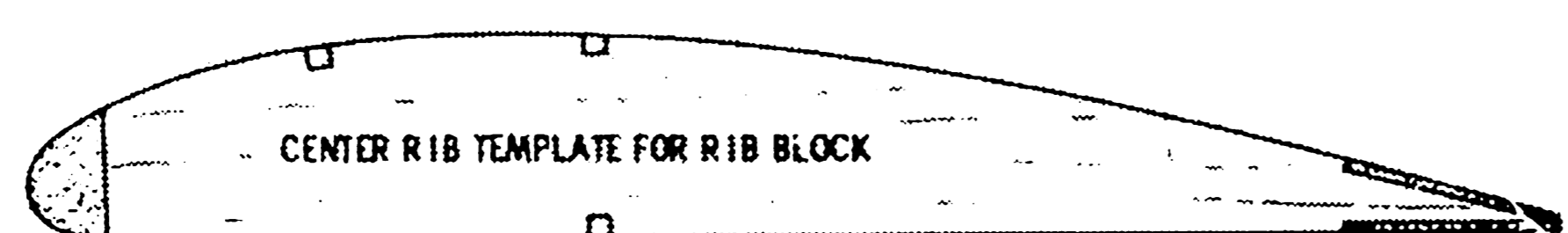


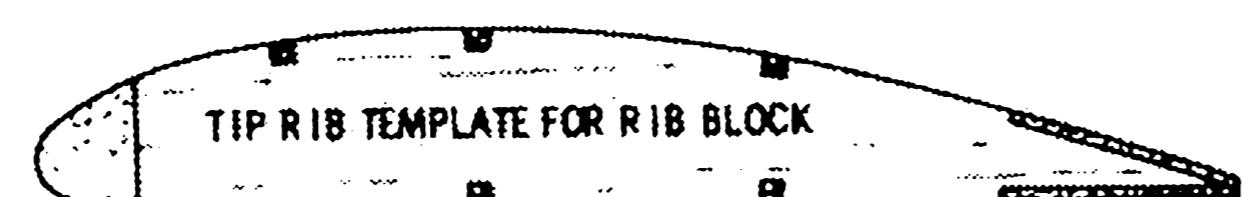
ALL SPARS ARE 1/8" SQ SPRUCE



TYPICAL RIB CENTER SECTION

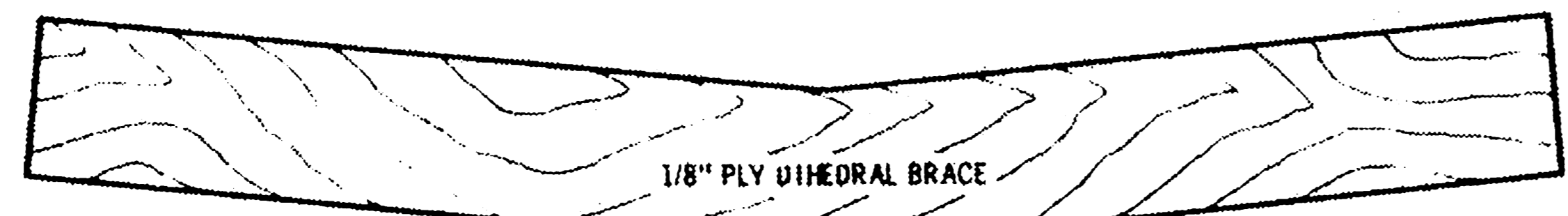


CENTER RIB TEMPLATE FOR RIB BLOCK



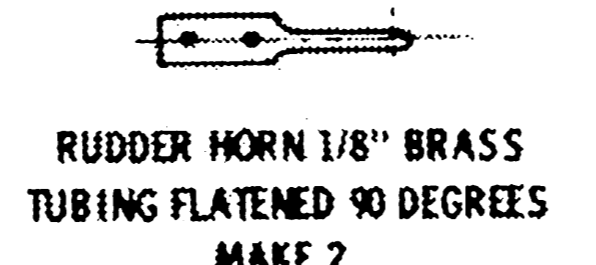
TIP RIB TEMPLATE FOR RIB BLOCK

NOTE ALL RIBS ARE 1/16" MED SHEET Balsa

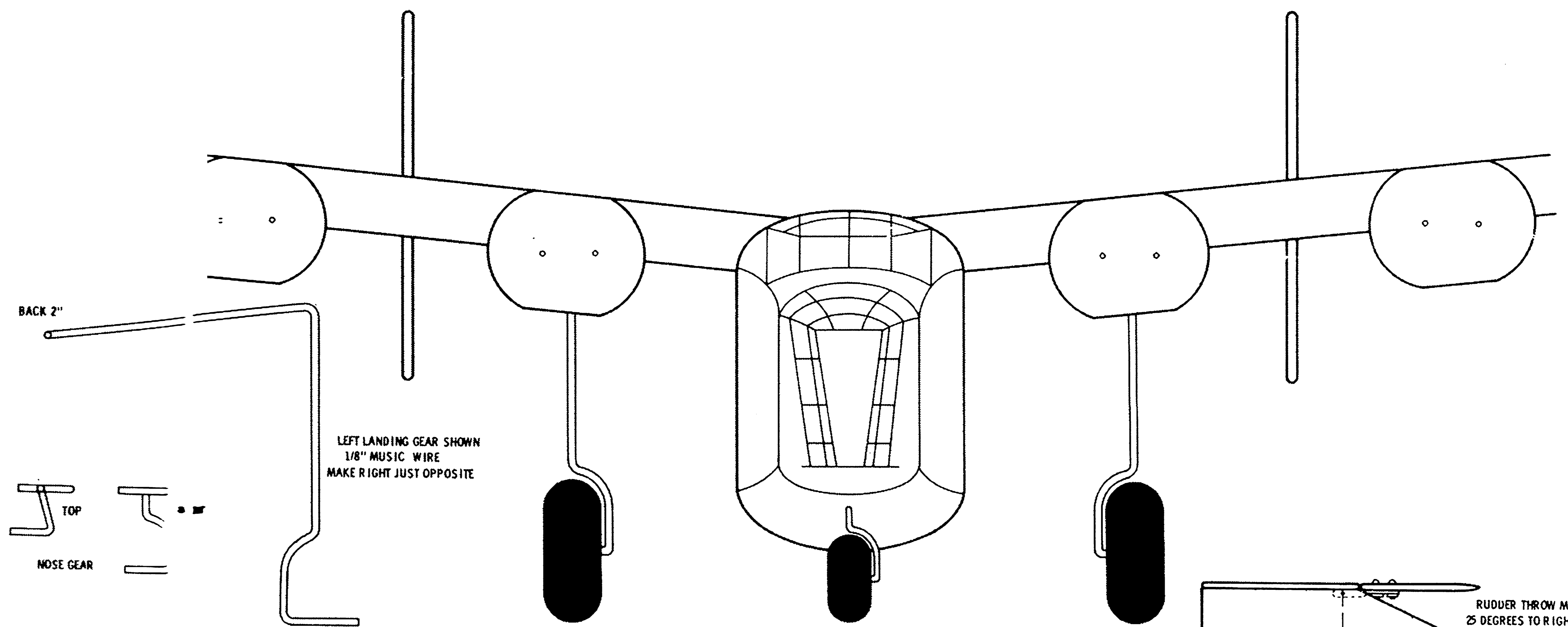


1/8" PLY DIHEDRAL BRACE

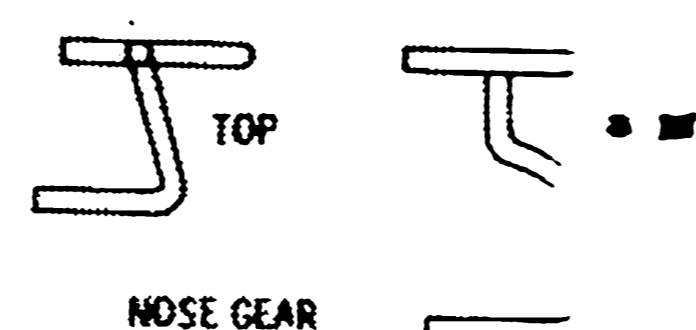
TYPICAL NACELLE CONSTRUCTION



RUDDER HORN 1/8" BRASS TUBING FLATTENED 90 DEGREES MAKE 2



LEFT LANDING GEAR SHOWN 1/8" MUSIC WIRE MAKE RIGHT JUST OPPOSITE

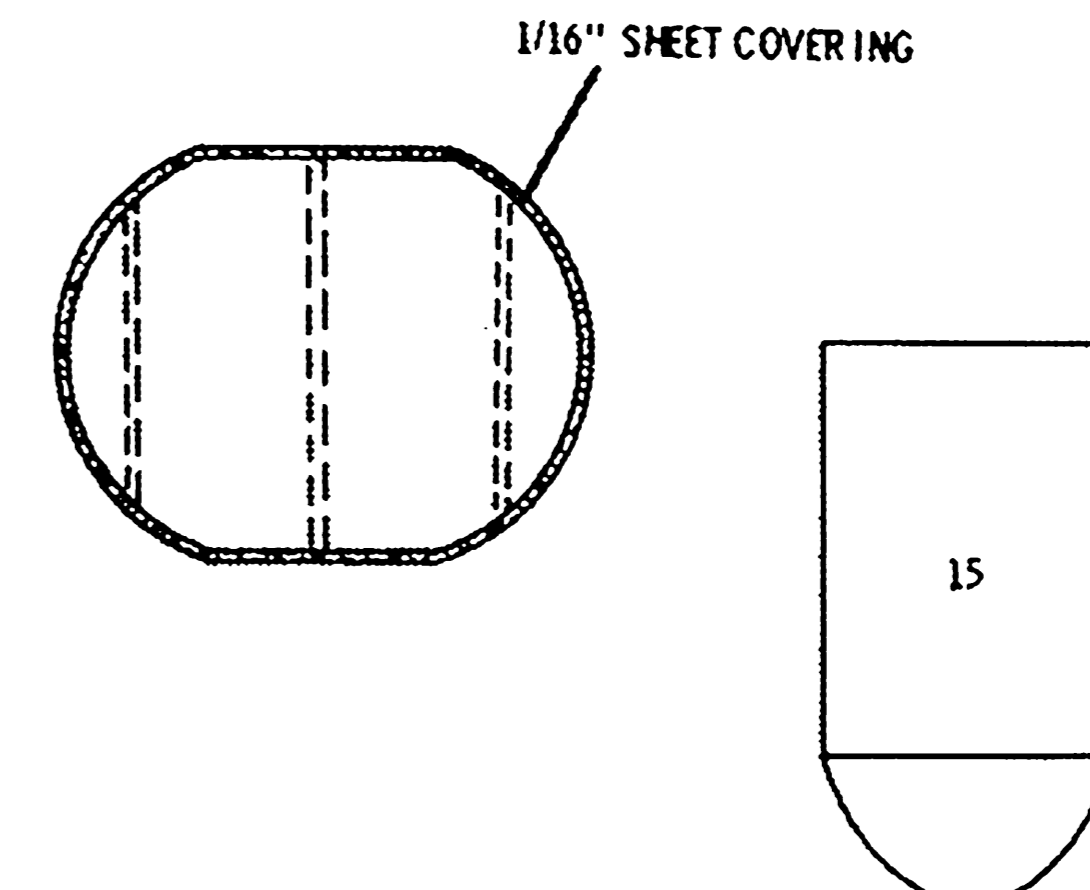


BACK 2"

TOP

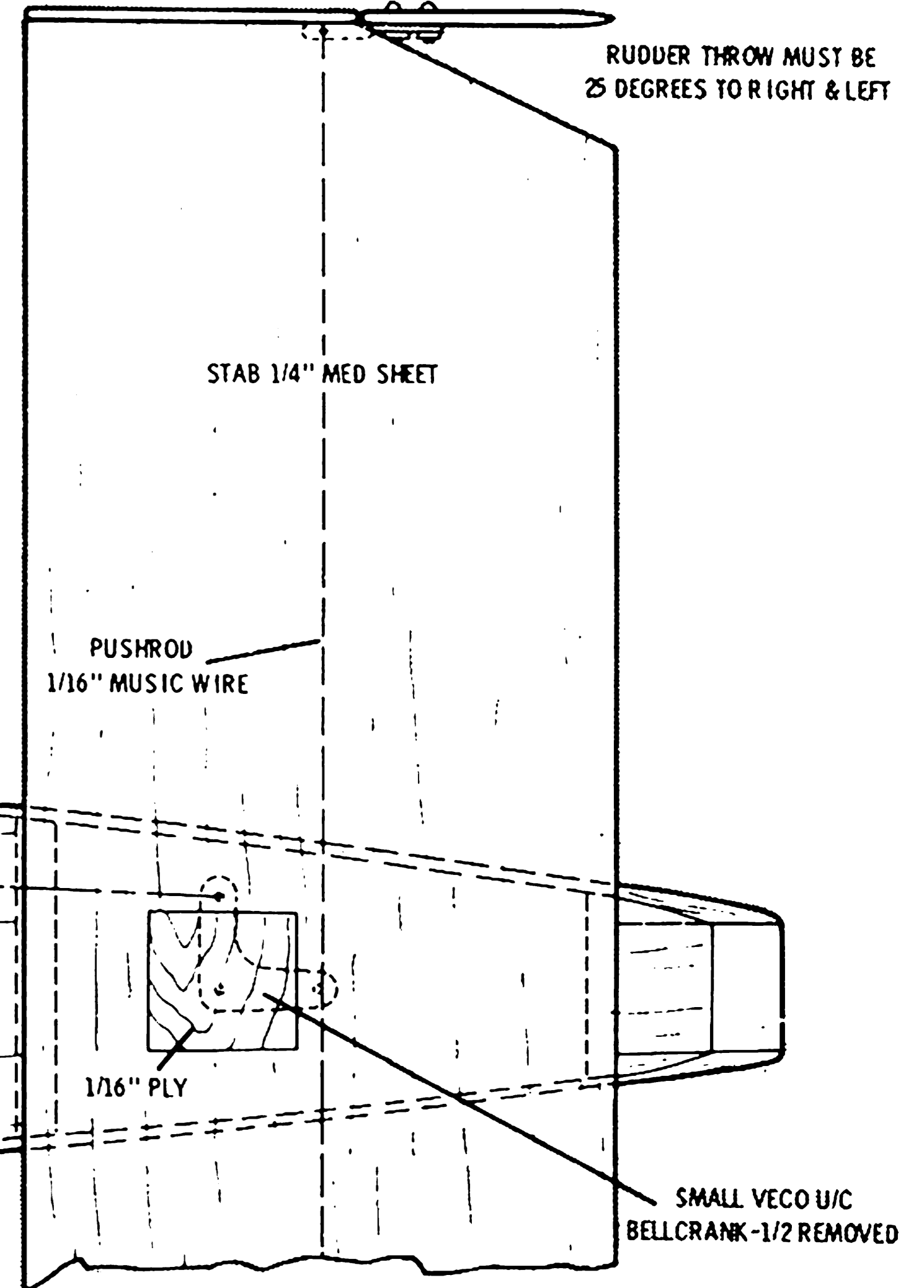
NOSE GEAR

NACELLE FRONT VIEW NOTE ENGINE MOUNTING HOLES DRILLED PARALLEL TO GROUND SO ENGINES ARE VERTICAL. SEE FRONT VIEW. INSTALL 2-56 BLIND NUTS IN EACH FIREWALL BEFORE GLUEING NACELLE



1/16" SHEET COVERING

15

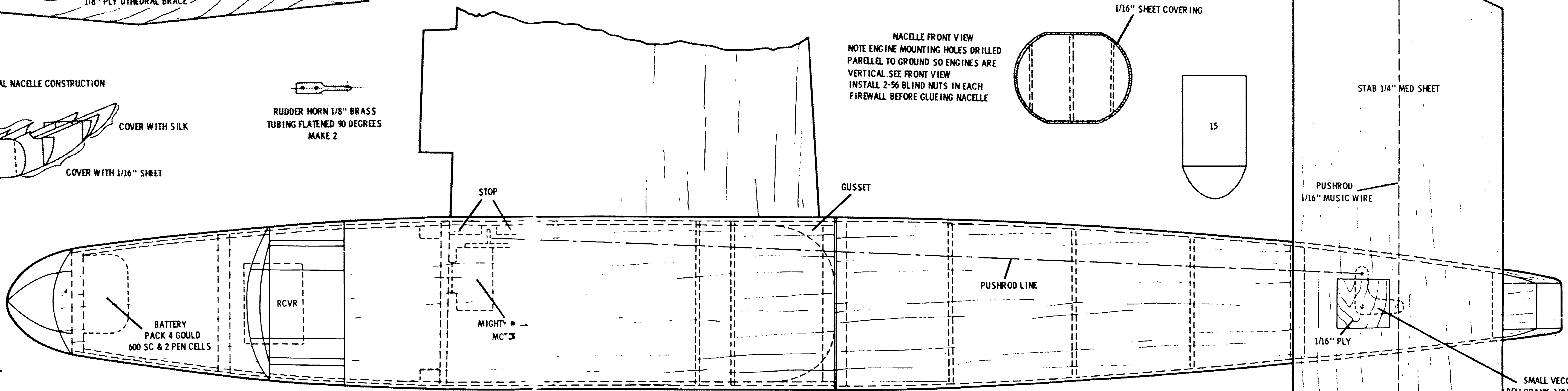


RUDDER THROW MUST BE 25 DEGREES TO RIGHT & LEFT

STAB 1/4" MED SHEET

PUSHROD 1/16" MUSIC WIRE

SMALL VECO U/C BELL CRANK - 1/2 REMOVED



BATTERY PACK 4 GOULD 600 SC & 2 PEN CELLS

RCVR

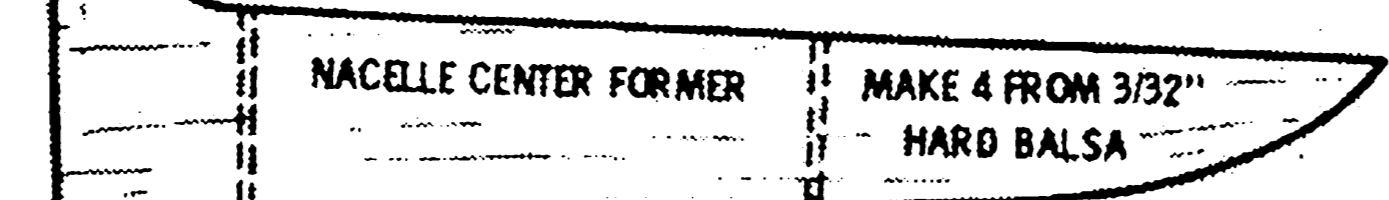
MIGHTY MC'S

STOP

GUSSET

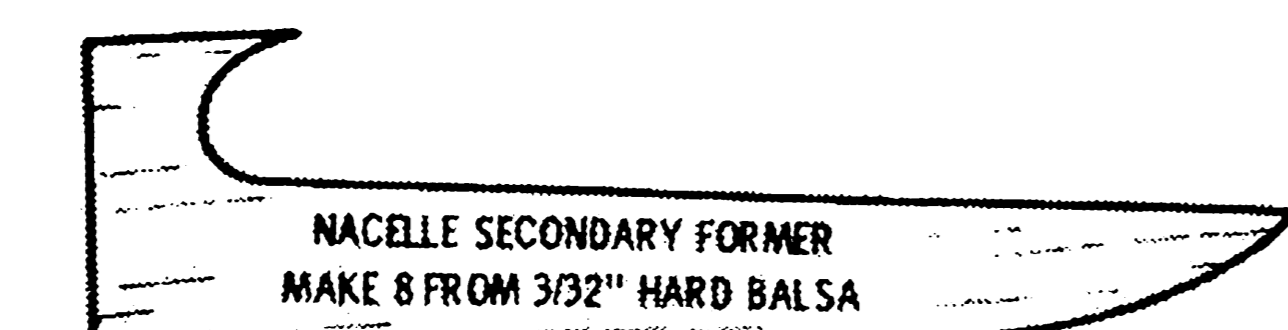
PUSHROD LINE

1/16" PLY

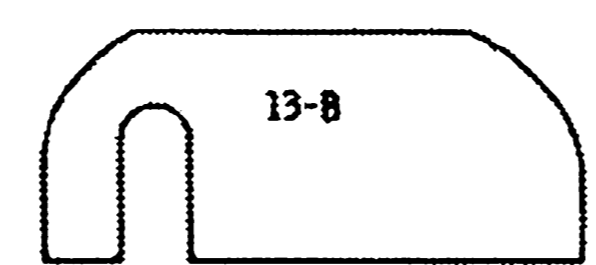


NACELLE CENTER FORMER MAKE 4 FROM 3/32" HARD Balsa

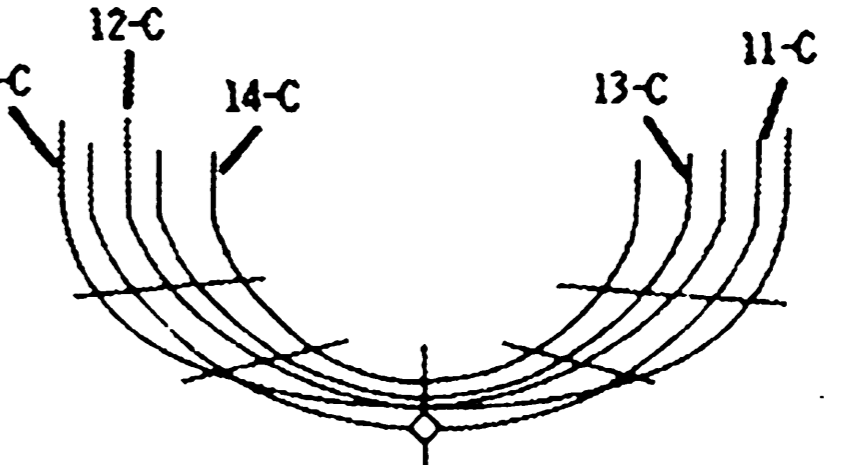
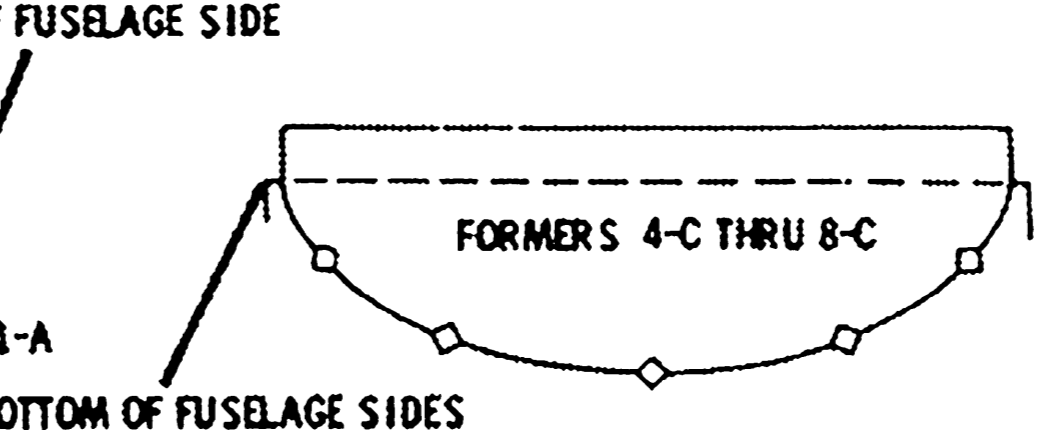
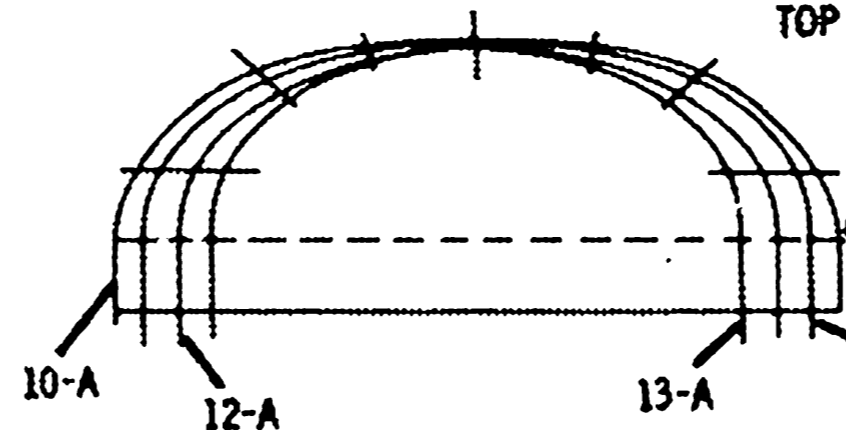
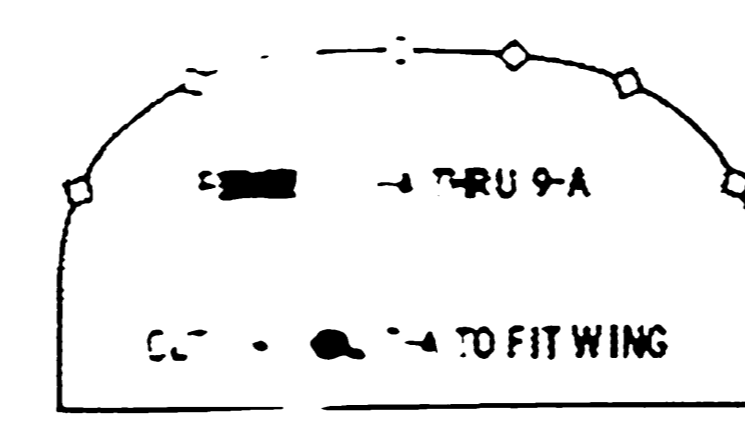
END OF 1/16" SHEET HERE



NACELLE SECONDARY FORMER MAKE 8 FROM 3/32" HARD Balsa



13-B

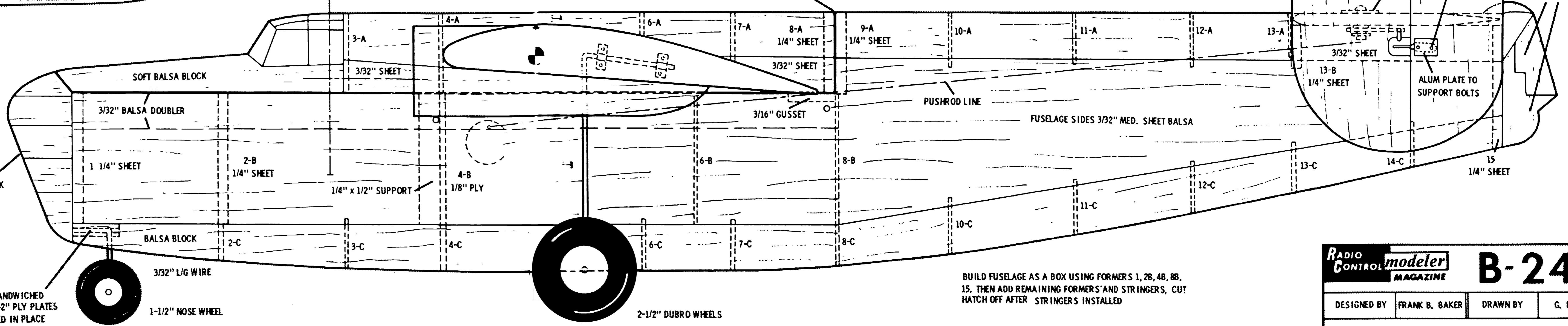


TOP OF FUSELAGE SIDE

FORMERS 4-C THRU 8-C

BOTTOM OF FUSELAGE SIDES

NOTE ALL STRINGERS ARE 1/8" SQ SPRUCE



L/G WIRE SANDWICHED BETWEEN TWO 3/32" PLY PLATES AND EPOXIED IN PLACE

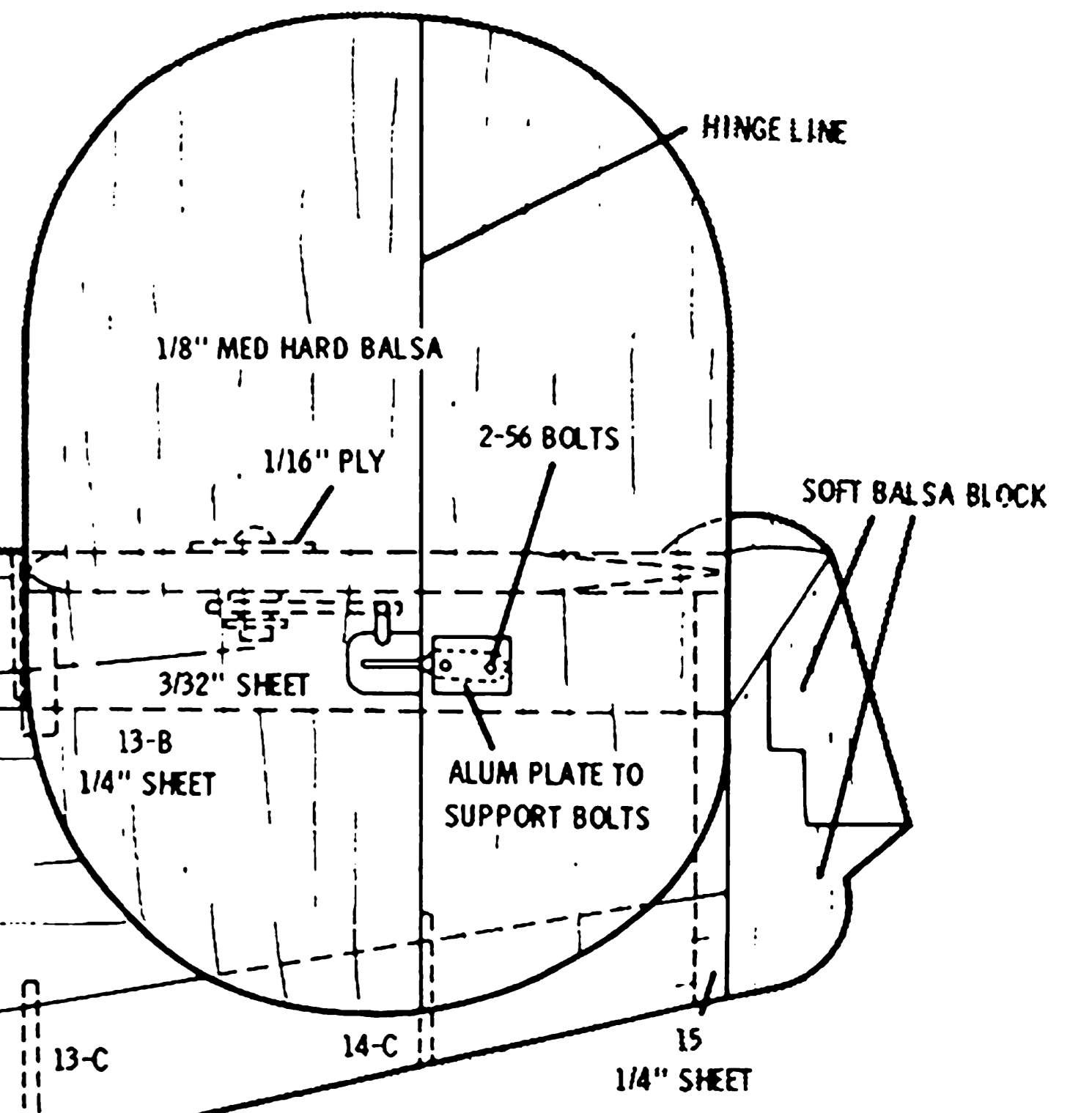
1-1/2" NOSE WHEEL

3/32" L/G WIRE

1-1/2" NOSE WHEEL

2-1/2" DUBRO WHEELS

BUILD FUSELAGE AS A BOX USING FORMERS 1, 2B, 4B, 8B, 15. THEN ADD REMAINING FORMERS AND STRINGERS. CUT HATCH OFF AFTER STRINGERS INSTALLED



1/8" MED HARD Balsa

1/16" PLY

2-56 BOLTS

SOFT Balsa BLOCK

ALUM PLATE TO SUPPORT BOLTS

15

14-C

13-C

12-C

11-C

10-C

9-C

8-C

7-C

6-C

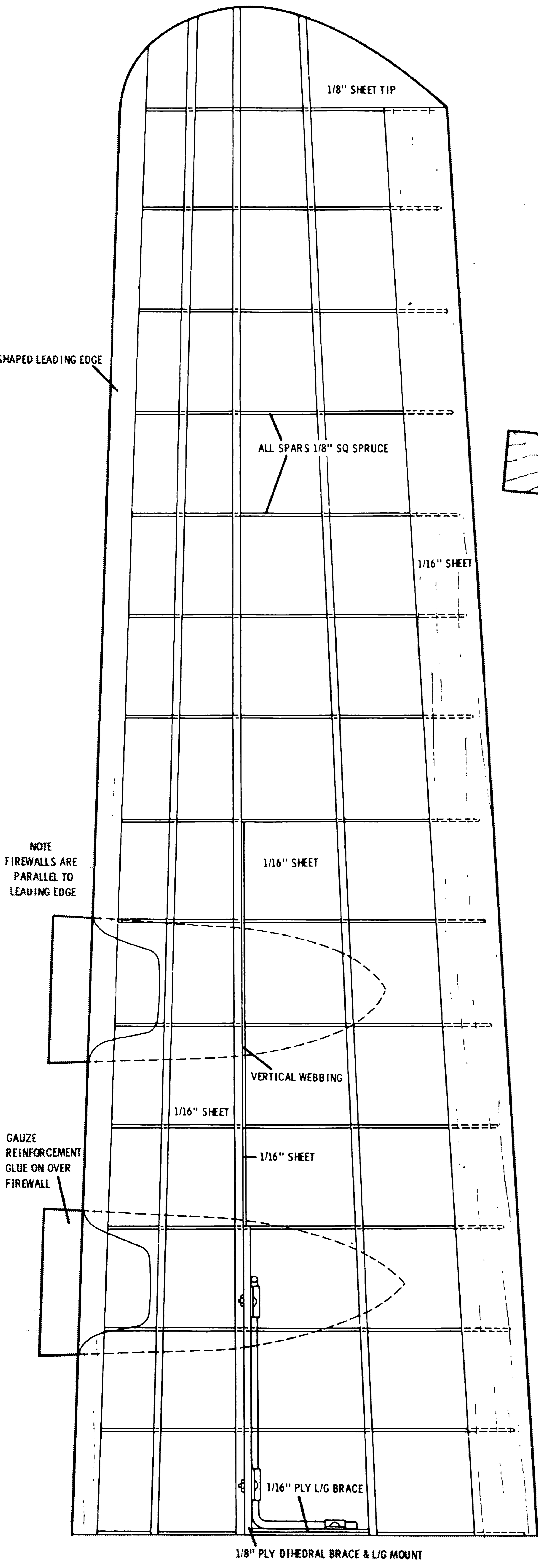
5-C

4-C

3-C

2-C

1-C



1/8" SHEET TIP

ALL SPARS 1/8" SQ SPRUCE

1/16" SHEET

1/16" SHEET

1/16" SHEET

1/16" SHEET

1/16" PLY L/G BRACE

1/8" PLY DIHEDRAL BRACE & L/G MOUNT

SHAPED LEADING EDGE

NOTE FIREWALLS ARE PARALLEL TO LEADING EDGE

GAUZE REINFORCEMENT GLUE ON OVER FIREWALL

RADIO CONTROL **modeler** MAGAZINE **B-24**

DESIGNED BY FRANK B. BAKER DRAWN BY G. FLORES

PLAN 195